

DATASHEET

SLC7A3 Mouse Monoclonal Antibody(C2966)

CAT. NO. AMA02578

KEY FEATURES

| | | | |
|---------------|--|---------------|--------------|
| Target | SLC7A3 | Source / Host | Mouse |
| Reactivity | Human, Mouse, Rat | Clonality | Monoclonal |
| Applications | WB, IHC, FC | Conjugation | Unconjugated |
| Form / Buffer | Mouse IgG1. Liquid in PBS, pH 7.3, 30% glycerol, and 0.01% sodium azide. | Storage | at-20°C |

BACKGROUND

Uniporter that mediates the uptake of cationic L-amino acids such as L-arginine, L-lysine and L-ornithine . The transport is sodium ions- and pH-independent, moderately trans-stimulated and is mediated by passive diffusion .

APPLICATION

To ensure optimal assay performance, AREX recommends conducting reagent titration tailored to each testing system for optimal detection results.

| | |
|-----|----------------|
| WB | 1:500 - 1:1000 |
| IHC | 1:100 - 1:500 |
| FC | 1:100 - 1:200 |

*Results are sample-specific. Please refer to your local assay conditions and test parameters for reference.

PRODUCT OVERVIEW

| | |
|-------------------|---|
| Description | Mouse monoclonal to SLC7A3 |
| Specificity | Recognizes endogenous levels of SLC7A3 protein |
| Antibody Type | Primary antibody |
| Immunogen | Recombinant fusion protein of human SLC7A3 expressed in E. Coli |
| Purification | This antibody is purified through a protein G column. |
| Molecular Weight | Predicted: 67 kD; Observed: 50 kD |
| Form/Buffer | Mouse IgG1. Liquid in PBS, pH 7.3, 30% glycerol, and 0.01% sodium azide. |
| Alternative Names | ATRC3; CAT3; CationIC, amino acid transporter 3; CAT-3; CAT3; CationIC, amino acid transporter y+; Solute carrier family 7 member 3 |
| Gene Symbol | SLC7A3 |
| Entrez Gene | 84889(Human); 11989(Mouse); 29485(Rat) |
| SwissProt | Q8WY07(Human); P70423(Mouse); O08812(Rat) |

*AREX continuously optimizes our products. Webpage content may not reflect the latest updates. For inquiries, please contact info@arexbio.com or your local distributor.

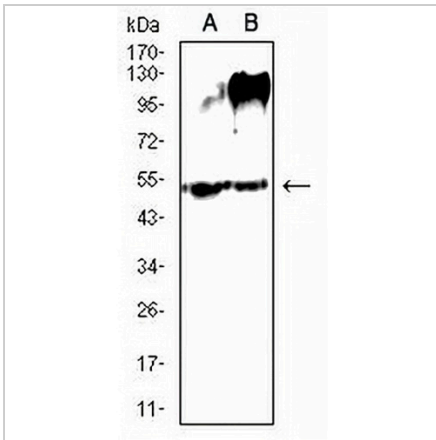
*Clone Number, Reactivity, Source/Host and Clonality can be found in the product name and Key Features section above.

DATASHEET

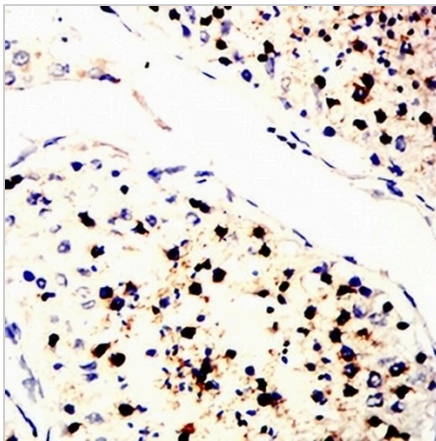
SLC7A3 Mouse Monoclonal Antibody(C2966)

CAT. NO. AMA02578

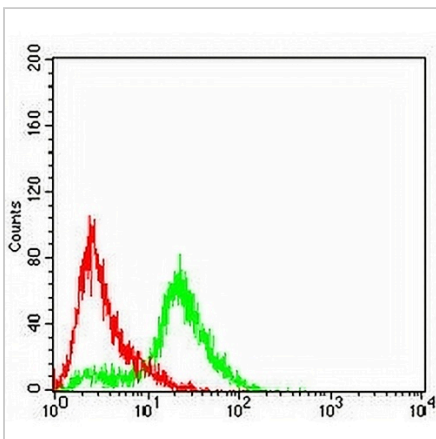
DATA



Western blot analysis of SLC7A3 expression in mouse lung (A), rat lung (B) whole cell lysates. (Predicted band size: 67 kD; Observed band size: 50 kD)



Immunohistochemical analysis of SLC7A3 staining in human testis formalin fixed paraffin embedded tissue section. The section was pre-treated using heat mediated antigen retrieval with sodium citrate buffer (pH 6.0). The section was then incubated with the antibody at room temperature and detected using an HRP conjugated compact polymer system. DAB was used as the chromogen. The section was then counterstained with haematoxylin and mounted with DPX.



Flow cytometric analysis of HeLa cells using Anti-SLC7A3 Antibody (green) and negative control (red).

STORAGE

Store at 4°C short term. For long term storage, store at -20°C, avoiding freeze/thaw cycles.

NOTE

For Research Use Only. Not for diagnostic, therapeutics, prophylactic or in vivo use.