

DATASHEET

Synapsin 1 Mouse Monoclonal Antibody(C2980)

CAT. NO. AMA02592

KEY FEATURES

Target	Synapsin 1	Source / Host	Mouse
Reactivity	Human, Mouse, Rat, Monkey	Clonality	Monoclonal
Applications	WB, IHC, IF/ICC, FC	Conjugation	Unconjugated
Form / Buffer	Mouse IgG1. Liquid in PBS, pH 7.3, 30% glycerol, and 0.01% sodium azide.	Storage	at-20°C

BACKGROUND

Neuronal phosphoprotein that coats synaptic vesicles, and binds to the cytoskeleton. Acts as a regulator of synaptic vesicles trafficking, involved in the control of neurotransmitter release at the pre-synaptic terminal . Also involved in the regulation of axon outgrowth and synaptogenesis . The complex formed with NOS1 and CAPON proteins is necessary for specific nitric-oxid functions at a presynaptic level .

APPLICATION

To ensure optimal assay performance, AREX recommends conducting reagent titration tailored to each testing system for optimal detection results.

WB	1:500 - 1:1000
IHC	1:100 - 1:500
IF/ICC	1:100 - 1:500
FC	1:100 - 1:200

*Results are sample-specific. Please refer to your local assay conditions and test parameters for reference.

PRODUCT OVERVIEW

Description	Mouse monoclonal to Synapsin 1
Specificity	Recognizes endogenous levels of Synapsin 1 protein
Antibody Type	Primary antibody
Immunogen	Recombinant fusion protein of human Synapsin 1 expressed in E. Coli
Purification	This antibody is purified through a protein G column.
Molecular Weight	Predicted: 74 kD; Observed: 74 kD
Form/Buffer	Mouse IgG1. Liquid in PBS, pH 7.3, 30% glycerol, and 0.01% sodium azide.
Alternative Names	Synapsin-1; Brain protein 4.1; Synapsin I
Gene Symbol	SYN1
Entrez Gene	6853(Human); 20964(Mouse); 24949(Rat)
SwissProt	P17600(Human); O88935(Mouse); P09951(Rat)

*AREX continuously optimizes our products. Webpage content may not reflect the latest updates. For inquiries, please contact info@arexbio.com or your local distributor.

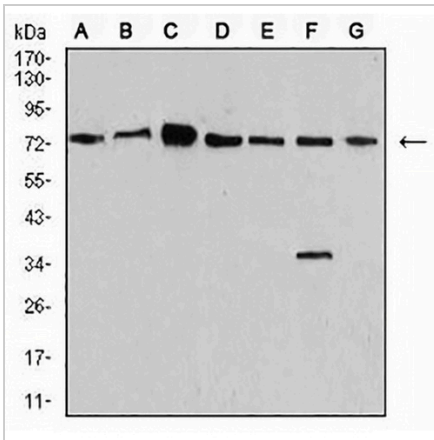
*Clone Number, Reactivity, Source/Host and Clonality can be found in the product name and Key Features section above.

DATASHEET

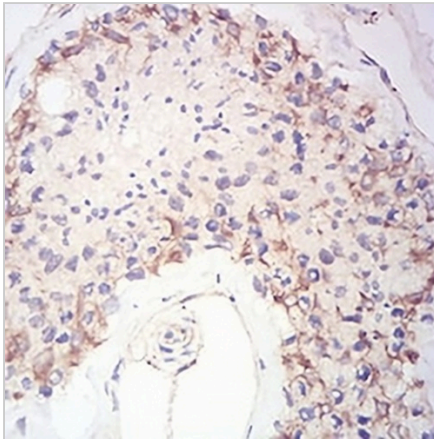
Synapsin 1 Mouse Monoclonal Antibody(C2980)

CAT. NO. AMA02592

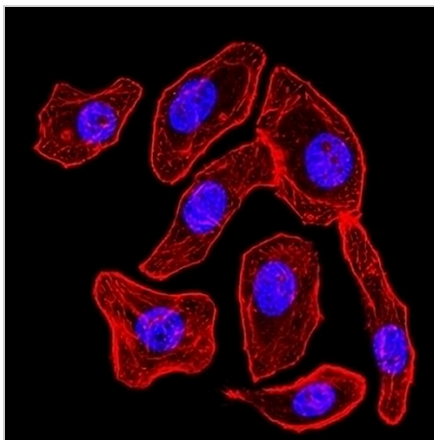
DATA



Western blot analysis of Synapsin 1 expression in SKNSH (A), NIH/3T3 (B), U251 (C), C6 (D), A549 (E), MCF7 (F), COS7 (G) whole cell lysates. (Predicted band size: 74 kD; Observed band size: 74 kD kD)



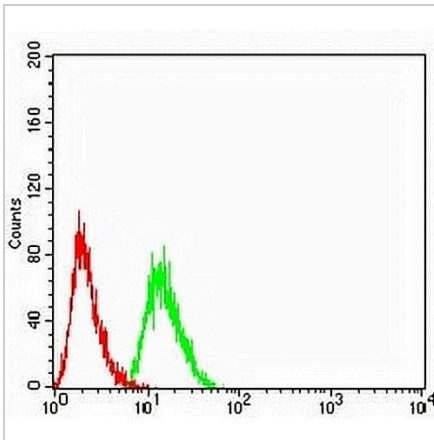
Immunohistochemical analysis of Synapsin 1 staining in human testis formalin fixed paraffin embedded tissue section. The section was pre-treated using heat mediated antigen retrieval with sodium citrate buffer (pH 6.0). The section was then incubated with the antibody at room temperature and detected using an HRP conjugated compact polymer system. DAB was used as the chromogen. The section was then counterstained with haematoxylin and mounted with DPX.



Immunofluorescent analysis of Synapsin 1 staining in GC7901 cells. Formalin-fixed cells were permeabilized with 0.1% Triton X-100 in TBS for 5-10 minutes and blocked with 3% BSA-PBS for 30 minutes at room temperature. Cells were probed with the primary antibody in 3% BSA-PBS and incubated overnight at 4 °C in a humidified chamber. Cells were washed with PBST and incubated with an AREX® Fluor 488 -conjugated secondary antibody (green) in PBS at room temperature in the dark. Phalloidin - AREX® Fluor 594 was used to stain Actin filaments (red). DAPI was used to stain the cell nuclei (blue).

DATASHEET**Synapsin 1 Mouse Monoclonal Antibody(C2980)**

CAT. NO. AMA02592

DATA (CONTINUED)

Flow cytometric analysis of HeLa cells using Anti-Synapsin 1 Antibody (green) and negative control (red).

STORAGE

Store at 4°C short term. For long term storage, store at -20°C, avoiding freeze/thaw cycles.

NOTE

For Research Use Only. Not for diagnostic, therapeutics, prophylactic or in vivo use.