

DATASHEET

TBP Mouse Monoclonal Antibody(C2983)

CAT. NO. AMA02595

KEY FEATURES

Target	TBP	Source / Host	Mouse
Reactivity	Human	Clonality	Monoclonal
Applications	WB, IHC, IF/ICC, FC	Conjugation	Unconjugated
Form / Buffer	Mouse IgG1. Liquid in PBS, pH 7.3, 30% glycerol, and 0.01% sodium azide.	Storage	at-20°C

BACKGROUND

The TFIID basal transcription factor complex plays a major role in the initiation of RNA polymerase II (Pol II)-dependent transcription -dependent transcription . TFIID recognizes and binds promoters with or without a TATA box via its subunit TBP, a TATA-box-binding protein, and promotes assembly of the pre-initiation complex (PIC) . The TFIID complex consists of TBP and TBP-associated factors (TAFs), including TAF1, TAF2, TAF3, TAF4, TAF5, TAF6, TAF7, TAF8, TAF9, TAF10, TAF11, TAF12 and TAF13 . The TFIID complex structure can be divided into 3 modules TFIID-A, TFIID-B, and TFIID-C . TBP forms the TFIID-A module together with TAF3 and TAF5 . TBP is a general transcription factor that functions at the core of the TFIID complex .

APPLICATION

To ensure optimal assay performance, AREX recommends conducting reagent titration tailored to each testing system for optimal detection results.

WB	1:500 - 1:1000
IHC	1:100 - 1:500
IF/ICC	1:100 - 1:500
FC	1:100 - 1:200

*Results are sample-specific. Please refer to your local assay conditions and test parameters for reference.

PRODUCT OVERVIEW

Description	Mouse monoclonal to TBP
Specificity	Recognizes endogenous levels of TBP protein
Antibody Type	Primary antibody
Immunogen	Recombinant fusion protein of human TBP expressed in E. Coli
Purification	This antibody is purified through a protein G column.
Molecular Weight	Predicted: 38 kD; Observed: 39 kD
Form/Buffer	Mouse IgG1. Liquid in PBS, pH 7.3, 30% glycerol, and 0.01% sodium azide.
Alternative Names	GTF2D1; TF2D; TFIID; TATA-box-binding protein; TATA sequence-binding protein; TATA-binding factor; TATA-box factor; Transcription initiation factor TFIID TBP subunit
Gene Symbol	TBP
Entrez Gene	6908(Human)
SwissProt	P20226(Human)

*AREX continuously optimizes our products. Webpage content may not reflect the latest updates. For inquiries, please contact info@arexbio.com or your local distributor.

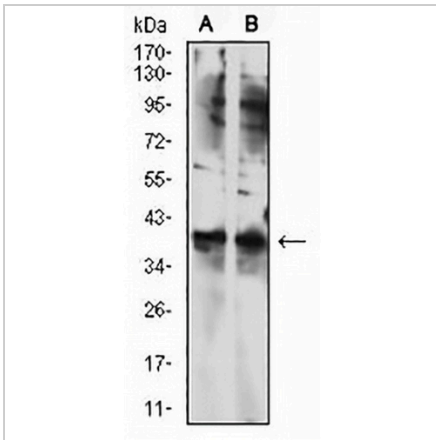
*Clone Number, Reactivity, Source/Host and Clonality can be found in the product name and Key Features section above.

DATASHEET

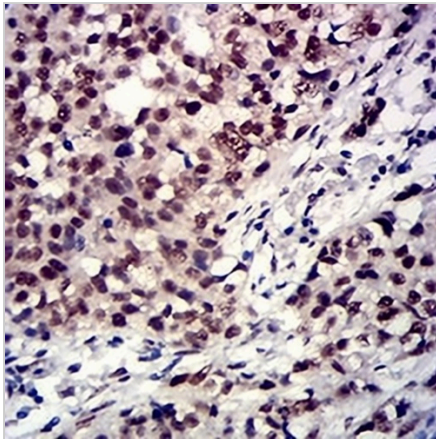
TBP Mouse Monoclonal Antibody(C2983)

CAT. NO. AMA02595

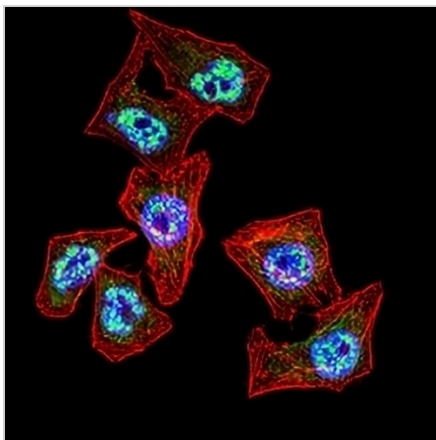
DATA



Western blot analysis of TBP expression in NIH/3T3 (A), SKNSH (B) whole cell lysates. (Predicted band size: 38 kD; Observed band size: 39 kD)



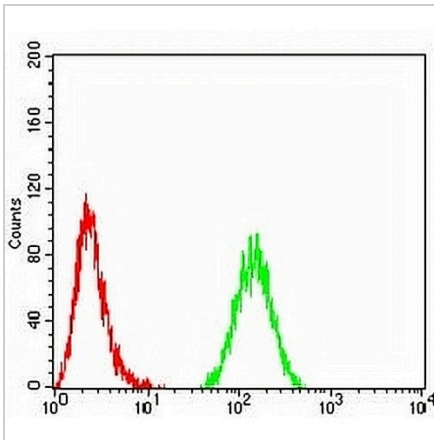
Immunohistochemical analysis of TBP staining in human bladder cancer formalin fixed paraffin embedded tissue section. The section was pre-treated using heat mediated antigen retrieval with sodium citrate buffer (pH 6.0). The section was then incubated with the antibody at room temperature and detected using an HRP conjugated compact polymer system. DAB was used as the chromogen. The section was then counterstained with haematoxylin and mounted with DPX.



Immunofluorescent analysis of TBP staining in HeLa cells. Formalin-fixed cells were permeabilized with 0.1% Triton X-100 in TBS for 5-10 minutes and blocked with 3% BSA-PBS for 30 minutes at room temperature. Cells were probed with the primary antibody in 3% BSA-PBS and incubated overnight at 4 °C in a humidified chamber. Cells were washed with PBST and incubated with an AREX® Fluor 488 -conjugated secondary antibody (green) in PBS at room temperature in the dark. Phalloidin - AREX® Fluor 594 was used to stain Actin filaments (red). DAPI was used to stain the cell nuclei (blue).

DATASHEET**TBP Mouse Monoclonal Antibody(C2983)**

CAT. NO. AMA02595

DATA (CONTINUED)

Flow cytometric analysis of HeLa cells using Anti-TBP Antibody (green) and negative control (red).

STORAGE

Store at 4°C short term. For long term storage, store at -20°C, avoiding freeze/thaw cycles.

NOTE

For Research Use Only. Not for diagnostic, therapeutics, prophylactic or in vivo use.