

DATASHEET

Tyrosine Hydroxylase Mouse Monoclonal Antibody(C2991)

CAT. NO. AMA02603

KEY FEATURES

Target	Tyrosine Hydroxylase	Source / Host	Mouse
Reactivity	Human, Rat	Clonality	Monoclonal
Applications	WB, IHC, IF/ICC, FC	Conjugation	Unconjugated
Form / Buffer	Mouse IgG1. Liquid in PBS, pH 7.3, 30% glycerol, and 0.01% sodium azide.	Storage	at-20°C

BACKGROUND

Catalyzes the conversion of L-tyrosine to L-dihydroxyphenylalanine (L-Dopa), the rate-limiting step in the biosynthesis of catecholamines, dopamine, noradrenaline, and adrenaline. Uses tetrahydrobiopterin and molecular oxygen to convert tyrosine to L-Dopa, the rate-limiting step in the biosynthesis of catecholamines, dopamine, noradrenaline, and adrenaline. Uses tetrahydrobiopterin and molecular oxygen to convert tyrosine to L-Dopa. In addition to tyrosine, is able to catalyze the hydroxylation of phenylalanine and tryptophan with lower specificity. Positively regulates the regression of retinal hyaloid vessels during postnatal development.

APPLICATION

To ensure optimal assay performance, AREX recommends conducting reagent titration tailored to each testing system for optimal detection results.

WB	1:500 - 1:1000
IHC	1:100 - 1:500
IF/ICC	1:100 - 1:500
FC	1:100 - 1:200

*Results are sample-specific. Please refer to your local assay conditions and test parameters for reference.

PRODUCT OVERVIEW

Description	Mouse monoclonal to Tyrosine Hydroxylase
Specificity	Recognizes endogenous levels of Tyrosine Hydroxylase protein
Antibody Type	Primary antibody
Immunogen	Recombinant fusion protein of human Tyrosine Hydroxylase expressed in E. Coli
Purification	This antibody is purified through a protein G column.
Molecular Weight	Predicted: 59 kD; Observed: 59 kD
Form/Buffer	Mouse IgG1. Liquid in PBS, pH 7.3, 30% glycerol, and 0.01% sodium azide.
Alternative Names	TYH; Tyrosine 3-monooxygenase; Tyrosine 3-hydroxylase; TH
Gene Symbol	TH
Entrez Gene	7054(Human); 25085(Rat)
SwissProt	P07101(Human); P04177(Rat)

*AREX continuously optimizes our products. Webpage content may not reflect the latest updates. For inquiries, please contact info@arexbio.com or your local distributor.

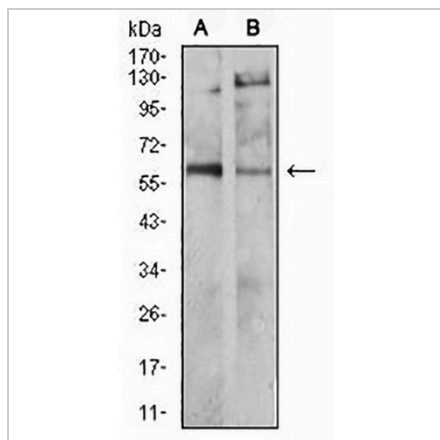
*Clone Number, Reactivity, Source/Host and Clonality can be found in the product name and Key Features section above.

DATASHEET

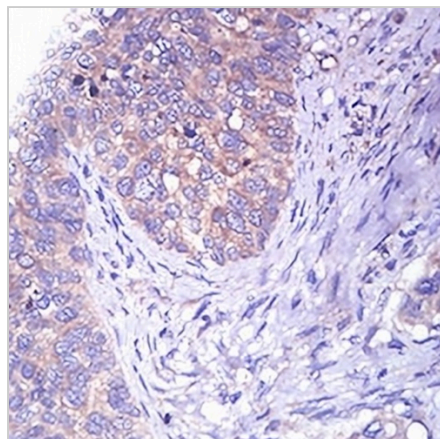
Tyrosine Hydroxylase Mouse Monoclonal Antibody(C2991)

CAT. NO. AMA02603

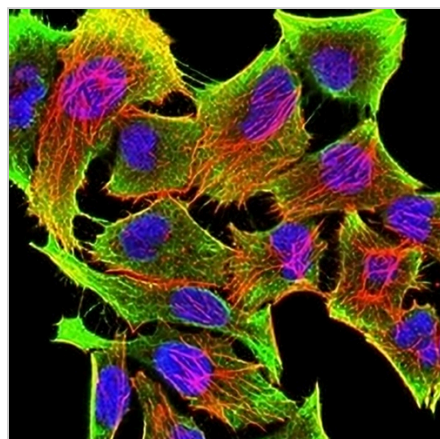
DATA



Western blot analysis of Tyrosine Hydroxylase expression in SHSY5Y (A), PC12 (B) whole cell lysates. (Predicted band size: 59 kD; Observed band size: 59 kD)



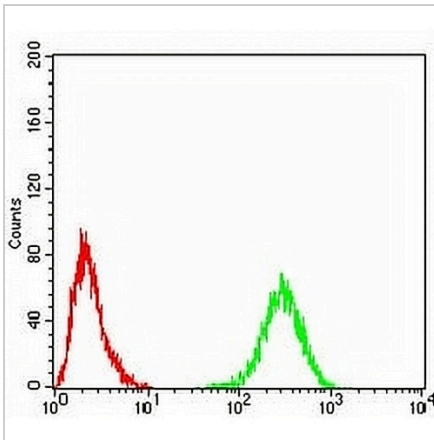
Immunohistochemical analysis of Tyrosine Hydroxylase staining in human cervical cancer formalin fixed paraffin embedded tissue section. The section was pre-treated using heat mediated antigen retrieval with sodium citrate buffer (pH 6.0). The section was then incubated with the antibody at room temperature and detected using an HRP conjugated compact polymer system. DAB was used as the chromogen. The section was then counterstained with haematoxylin and mounted with DPX.



Immunofluorescent analysis of Tyrosine Hydroxylase staining in Hela cells. Formalin-fixed cells were permeabilized with 0.1% Triton X-100 in TBS for 5-10 minutes and blocked with 3% BSA-PBS for 30 minutes at room temperature. Cells were probed with the primary antibody in 3% BSA-PBS and incubated overnight at 4 °C in a humidified chamber. Cells were washed with PBST and incubated with an AREX® Fluor 488 -conjugated secondary antibody (green) in PBS at room temperature in the dark. Phalloidin - AREX® Fluor 594 was used to stain Actin filaments (red). DAPI was used to stain the cell nuclei (blue).

DATASHEET**Tyrosine Hydroxylase Mouse Monoclonal Antibody(C2991)**

CAT. NO. AMA02603

DATA (CONTINUED)

Flow cytometric analysis of HeLa cells using Anti-Tyrosine Hydroxylase Antibody (green) and negative control (red).

STORAGE

Store at 4°C short term. For long term storage, store at -20°C, avoiding freeze/thaw cycles.

NOTE

For Research Use Only. Not for diagnostic, therapeutics, prophylactic or in vivo use.