

**DATASHEET**

**CD282 Mouse Monoclonal Antibody(C2995)**

CAT. NO. AMA02607

**KEY FEATURES**

Target	CD282	Source / Host	Mouse
Reactivity	Human	Clonality	Monoclonal
Applications	WB	Conjugation	Unconjugated
Form / Buffer	Mouse IgG1. Liquid in PBS, pH 7.3, 30% glycerol, and 0.01% sodium azide.	Storage	at-20°C

**BACKGROUND**

Cooperates with LY96 to mediate the innate immune response to bacterial lipoproteins and other microbial cell wall components. Cooperates with TLR1 or TLR6 to mediate the innate immune response to bacterial lipoproteins or lipopeptides . Acts via MYD88 and TRAF6, leading to NF-kappa-B activation, cytokine secretion and the inflammatory response. May also activate immune cells and promote apoptosis in response to the lipid moiety of lipoproteins . Recognizes mycoplasmal macrophage-activating lipopeptide-2kD (MALP-2), soluble tuberculosis factor (STF), phenol-soluble modulins (PSM) and B.burgdorferi outer surface protein A lipoprotein (OspA-L) cooperatively with TLR6 .

**APPLICATION**

To ensure optimal assay performance, AREX recommends conducting reagent titration tailored to each testing system for optimal detection results.

WB	1:500 - 1:1000
----	----------------

\*Results are sample-specific. Please refer to your local assay conditions and test parameters for reference.

**PRODUCT OVERVIEW**

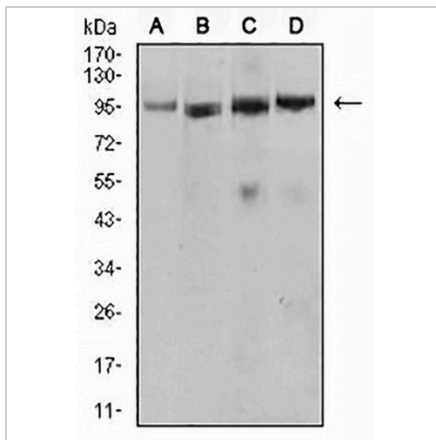
Description	Mouse monoclonal to CD282
Specificity	Recognizes endogenous levels of CD282 protein
Antibody Type	Primary antibody
Immunogen	Recombinant fusion protein of human CD282 expressed in E. Coli
Purification	This antibody is purified through a protein G column.
Molecular Weight	Predicted: 90 kD; Observed: 95 kD kD
Form/Buffer	Mouse IgG1. Liquid in PBS, pH 7.3, 30% glycerol, and 0.01% sodium azide.
Alternative Names	TIL4; Toll-like receptor 2; Toll/interleukin-1 receptor-like protein 4; CD282
Gene Symbol	TLR2
Entrez Gene	7097(Human)
SwissProt	O60603(Human)

\*AREX continuously optimizes our products. Webpage content may not reflect the latest updates. For inquiries, please contact [info@arexbio.com](mailto:info@arexbio.com) or your local distributor.

\*Clone Number, Reactivity, Source/Host and Clonality can be found in the product name and Key Features section above.

**DATASHEET****CD282 Mouse Monoclonal Antibody(C2995)**

CAT. NO. AMA02607

**DATA**

Western blot analysis of CD282 expression in Ramos (A), U937 (B), Jurkat (C), HeLa (D) whole cell lysates. (Predicted band size: 90 kD; Observed band size: 95 kD kD)

**STORAGE**

Store at 4°C short term. For long term storage, store at -20°C, avoiding freeze/thaw cycles.

**NOTE**

For Research Use Only. Not for diagnostic, therapeutics, prophylactic or in vivo use.