

**DATASHEET**

**CD268 Mouse Monoclonal Antibody(C2998)**

CAT. NO. AMA02610

**KEY FEATURES**

Target	CD268	Source / Host	Mouse
Reactivity	Human, Rat	Clonality	Monoclonal
Applications	WB, FC	Conjugation	Unconjugated
Form / Buffer	Mouse IgG2b. Liquid in PBS, pH 7.3, 30% glycerol, and 0.01% sodium azide.	Storage	at-20°C

**BACKGROUND**

B-cell receptor specific for TNFSF13B/TALL1/BAFF/BLyS. Promotes the survival of mature B-cells and the B-cell response.

**APPLICATION**

To ensure optimal assay performance, AREX recommends conducting reagent titration tailored to each testing system for optimal detection results.

WB	1:500 - 1:1000
FC	1:100 - 1:200

\*Results are sample-specific. Please refer to your local assay conditions and test parameters for reference.

**PRODUCT OVERVIEW**

Description	Mouse monoclonal to CD268
Specificity	Recognizes endogenous levels of CD268 protein
Antibody Type	Primary antibody
Immunogen	Recombinant fusion protein of human CD268 expressed in E. Coli
Purification	This antibody is purified through a protein G column.
Molecular Weight	Predicted: 19 kD; Observed: 43 kD kD
Form/Buffer	Mouse IgG2b. Liquid in PBS, pH 7.3, 30% glycerol, and 0.01% sodium azide.
Alternative Names	BAFFR; BR3; Tumor necrosis factor receptor superfamily member 13C; B-cell-activating factor receptor; BAFF receptor; BAFF-R; BLyS receptor 3; CD268
Gene Symbol	TNFRSF13C
Entrez Gene	115650(Human)
SwissProt	Q96RJ3(Human)

\*AREX continuously optimizes our products. Webpage content may not reflect the latest updates. For inquiries, please contact [info@arexbio.com](mailto:info@arexbio.com) or your local distributor.

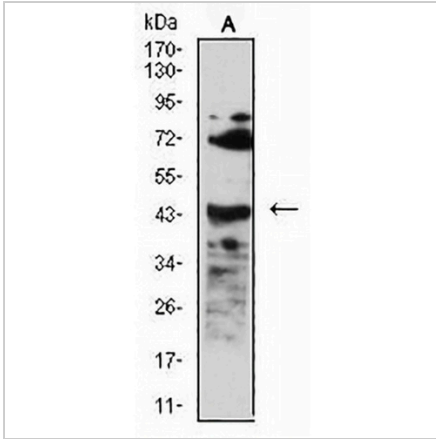
\*Clone Number, Reactivity, Source/Host and Clonality can be found in the product name and Key Features section above.

**DATASHEET**

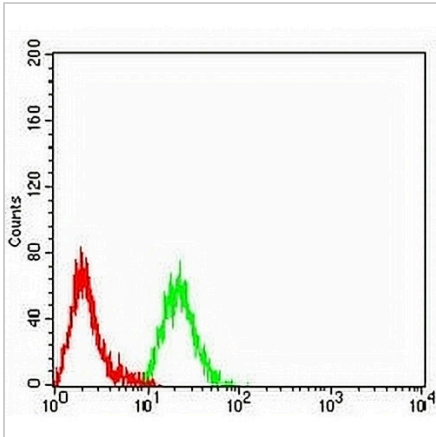
**CD268 Mouse Monoclonal Antibody(C2998)**

CAT. NO. AMA02610

**DATA**



Western blot analysis of CD268 expression in C6 (A) whole cell lysates. (Predicted band size: 19 kD; Observed band size: 43 kD)



Flow cytometric analysis of Raji cells using Anti-CD268 Antibody (green) and negative control (red).

**STORAGE**

Store at 4°C short term. For long term storage, store at -20°C, avoiding freeze/thaw cycles.

**NOTE**

For Research Use Only. Not for diagnostic, therapeutics, prophylactic or in vivo use.