

**DATASHEET**

**CD30 Mouse Monoclonal Antibody(C3000)**

CAT. NO. AMA02612

**KEY FEATURES**

Target	CD30	Source / Host	Mouse
Reactivity	Human, Mouse	Clonality	Monoclonal
Applications	WB, IF/ICC, FC	Conjugation	Unconjugated
Form / Buffer	Mouse IgG1. Liquid in PBS, pH 7.3, 30% glycerol, and 0.01% sodium azide.	Storage	at-20°C

**BACKGROUND**

Receptor for TNFSF8/CD30L . May play a role in the regulation of cellular growth and transformation of activated lymphoblasts. Regulates gene expression through activation of NF-kappa-B .

**APPLICATION**

To ensure optimal assay performance, AREX recommends conducting reagent titration tailored to each testing system for optimal detection results.

WB	1:500 - 1:1000
IF/ICC	1:50 - 1:100
FC	1:100 - 1:200

\*Results are sample-specific. Please refer to your local assay conditions and test parameters for reference.

**PRODUCT OVERVIEW**

Description	Mouse monoclonal to CD30
Specificity	Recognizes endogenous levels of CD30 protein
Antibody Type	Primary antibody
Immunogen	Recombinant fusion protein of human CD30 expressed in E. Coli
Purification	This antibody is purified through a protein G column.
Molecular Weight	Predicted: 64 kD; Observed: 64 kD
Form/Buffer	Mouse IgG1. Liquid in PBS, pH 7.3, 30% glycerol, and 0.01% sodium azide.
Alternative Names	CD30; D1S166E; Tumor necrosis factor receptor superfamily member 8; CD30L receptor; Ki-1 antigen; Lymphocyte activation antigen CD30; CD30
Gene Symbol	TNFRSF8
Entrez Gene	943(Human); 25069(Rat)
SwissProt	P28908(Human); Q60846(Mouse)

\*AREX continuously optimizes our products. Webpage content may not reflect the latest updates. For inquiries, please contact [info@arexbio.com](mailto:info@arexbio.com) or your local distributor.

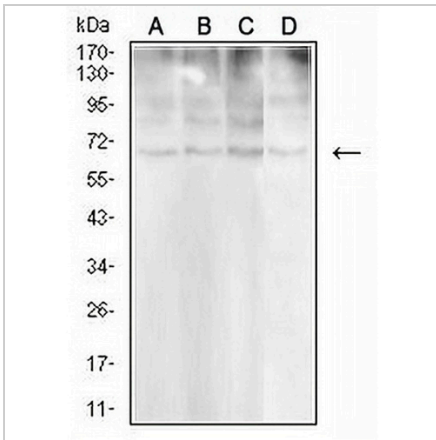
\*Clone Number, Reactivity, Source/Host and Clonality can be found in the product name and Key Features section above.

**DATASHEET**

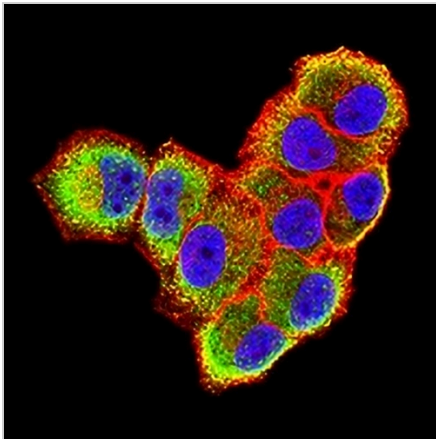
**CD30 Mouse Monoclonal Antibody(C3000)**

CAT. NO. AMA02612

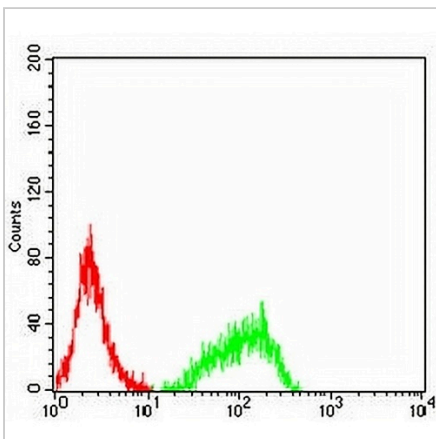
**DATA**



Western blot analysis of CD30 expression in HeLa (A), MCF7 (B), HCT116 (C), PC3 (D) whole cell lysates. (Predicted band size: 64 kD; Observed band size: 64 kD)



Immunofluorescent analysis of CD30 staining in HeLa cells. Formalin-fixed cells were permeabilized with 0.1% Triton X-100 in TBS for 5-10 minutes and blocked with 3% BSA-PBS for 30 minutes at room temperature. Cells were probed with the primary antibody in 3% BSA-PBS and incubated overnight at 4 °C in a humidified chamber. Cells were washed with PBST and incubated with an AREX® Fluor 488 -conjugated secondary antibody (green) in PBS at room temperature in the dark. Phalloidin - AREX® Fluor 594 was used to stain Actin filaments (red). DAPI was used to stain the cell nuclei (blue).



Flow cytometric analysis of Jurkat cells using Anti-CD30 Antibody (green) and negative control (red).

**STORAGE**

Store at 4°C short term. For long term storage, store at -20°C, avoiding freeze/thaw cycles.

**NOTE**

For Research Use Only. Not for diagnostic, therapeutics, prophylactic or in vivo use.