

**DATASHEET**

**Topoisomerase 2 alpha Mouse Monoclonal Antibody(C3007)**

CAT. NO. AMA02619

**KEY FEATURES**

Target	Topoisomerase 2 alpha	Source / Host	Mouse
Reactivity	Human, Rat	Clonality	Monoclonal
Applications	WB, IF/ICC, FC	Conjugation	Unconjugated
Form / Buffer	Mouse IgG2b. Liquid in PBS, pH 7.3, 30% glycerol, and 0.01% sodium azide.	Storage	at-20°C

**BACKGROUND**

Key decatenating enzyme that alters DNA topology by binding to two double-stranded DNA molecules, generating a double-stranded break in one of the strands, passing the intact strand through the broken strand, and religating the broken strand . May play a role in regulating the period length of BMAL1 transcriptional oscillation .

**APPLICATION**

To ensure optimal assay performance, AREX recommends conducting reagent titration tailored to each testing system for optimal detection results.

WB	1:500 - 1:1000
IF/ICC	1:50 - 1:250
FC	1:100 - 1:200

\*Results are sample-specific. Please refer to your local assay conditions and test parameters for reference.

**PRODUCT OVERVIEW**

Description	Mouse monoclonal to Topoisomerase 2 alpha
Specificity	Recognizes endogenous levels of Topoisomerase 2 alpha protein
Antibody Type	Primary antibody
Immunogen	Recombinant fusion protein of human Topoisomerase 2 alpha expressed in E. Coli
Purification	This antibody is purified through a protein G column.
Molecular Weight	Predicted: 174 kD; Observed: 174 kD kD
Form/Buffer	Mouse IgG2b. Liquid in PBS, pH 7.3, 30% glycerol, and 0.01% sodium azide.
Alternative Names	TOP2; DNA topoisomerase 2-alpha; DNA topoisomerase II, alpha isozyme
Gene Symbol	TOP2A
Entrez Gene	7153(Human); 360243(Rat)
SwissProt	P11388(Human); P41516(Rat)

\*AREX continuously optimizes our products. Webpage content may not reflect the latest updates. For inquiries, please contact [info@arexbio.com](mailto:info@arexbio.com) or your local distributor.

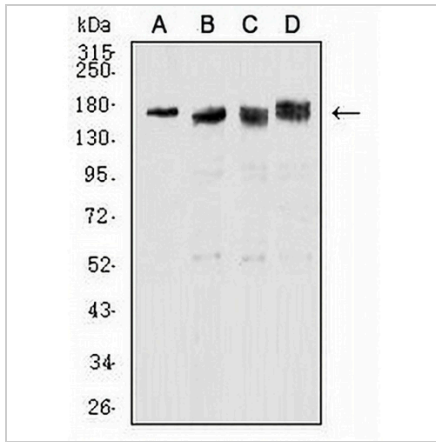
\*Clone Number, Reactivity, Source/Host and Clonality can be found in the product name and Key Features section above.

**DATASHEET**

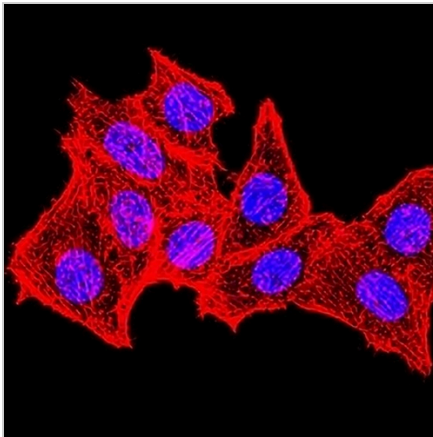
**Topoisomerase 2 alpha Mouse Monoclonal Antibody(C3007)**

CAT. NO. AMA02619

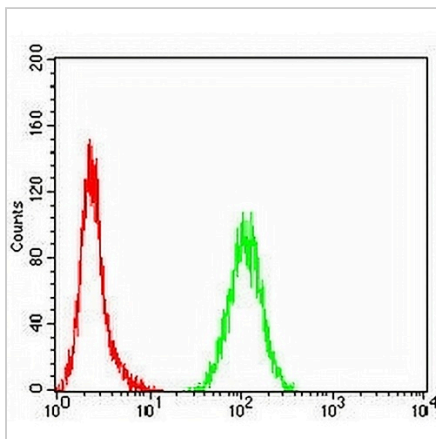
**DATA**



Western blot analysis of Topoisomerase 2 alpha expression in PC12 (A), HeLa (B), Jurkat (C), K562 (D) whole cell lysates. (Predicted band size: 174 kD; Observed band size: 174 kD)



Immunofluorescent analysis of Topoisomerase 2 alpha staining in HeLa cells. Formalin-fixed cells were permeabilized with 0.1% Triton X-100 in TBS for 5-10 minutes and blocked with 3% BSA-PBS for 30 minutes at room temperature. Cells were probed with the primary antibody in 3% BSA-PBS and incubated overnight at 4 °C in a humidified chamber. Cells were washed with PBST and incubated with an AREX® Fluor 488 - conjugated secondary antibody (green) in PBS at room temperature in the dark. Phalloidin - AREX® Fluor 594 was used to stain Actin filaments (red). DAPI was used to stain the cell nuclei (blue).



Flow cytometric analysis of HeLa cells using Anti-Topoisomerase 2 alpha Antibody (green) and negative control (red).

**STORAGE**

Store at 4°C short term. For long term storage, store at -20°C, avoiding freeze/thaw cycles.

**NOTE**

For Research Use Only. Not for diagnostic, therapeutics, prophylactic or in vivo use.