

DATASHEET

TSPAN16 Mouse Monoclonal Antibody(C3015)

CAT. NO. AMA02627

KEY FEATURES

Target	TSPAN16	Source / Host	Mouse
Reactivity	Human, Mouse, Rat, Monkey	Clonality	Monoclonal
Applications	WB, IHC, FC	Conjugation	Unconjugated
Form / Buffer	Mouse IgG1. Liquid in PBS, pH 7.3, 30% glycerol, and 0.01% sodium azide.	Storage	at-20°C

BACKGROUND

The protein encoded by this gene is a member of the transmembrane 4 superfamily, also known as the tetraspanin family. Most of these members are cell-surface proteins that are characterized by the presence of four hydrophobic domains. The proteins mediate signal transduction events that play a role in the regulation of cell development, activation, growth and motility. This encoded protein might couple to signal transduction pathways and possibly modulate cellular activation and adhesion in haemopoietic and neural tissue. Several transcript variants encoding different isoforms have been found for this gene.

APPLICATION

To ensure optimal assay performance, AREX recommends conducting reagent titration tailored to each testing system for optimal detection results.

WB	1:500 - 1:1000
IHC	1:100 - 1:500
FC	1:100 - 1:200

*Results are sample-specific. Please refer to your local assay conditions and test parameters for reference.

PRODUCT OVERVIEW

Description	Mouse monoclonal to TSPAN16
Specificity	Recognizes endogenous levels of TSPAN16 protein
Antibody Type	Primary antibody
Immunogen	Recombinant fusion protein of human TSPAN16 expressed in E. Coli
Purification	This antibody is purified through a protein G column.
Molecular Weight	Predicted: 26 kD; Observed: 83 kD kD
Form/Buffer	Mouse IgG1. Liquid in PBS, pH 7.3, 30% glycerol, and 0.01% sodium azide.
Alternative Names	TM4SF16; Tetraspanin-16; Tspan-16; Tetraspanin TM4-B; Transmembrane 4 superfamily member 16
Gene Symbol	TSPAN16
Entrez Gene	26526(Human)
SwissProt	Q9UKR8(Human)

*AREX continuously optimizes our products. Webpage content may not reflect the latest updates. For inquiries, please contact info@arexbio.com or your local distributor.

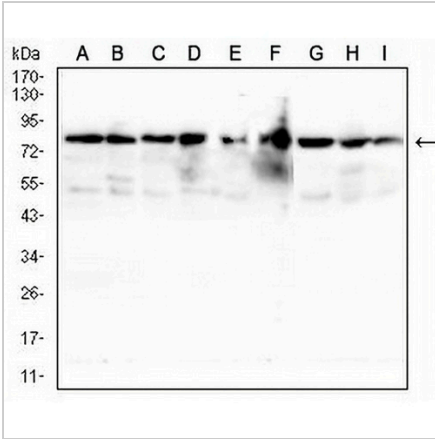
*Clone Number, Reactivity, Source/Host and Clonality can be found in the product name and Key Features section above.

DATASHEET

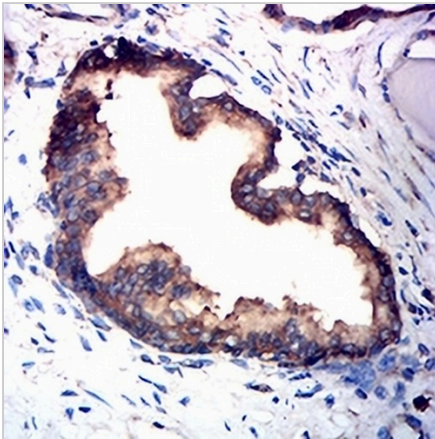
TSPAN16 Mouse Monoclonal Antibody(C3015)

CAT. NO. AMA02627

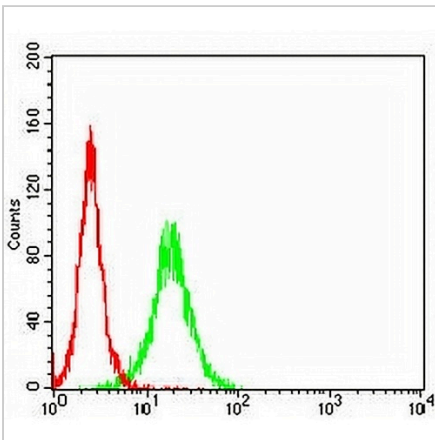
DATA



Western blot analysis of TSPAN16 expression in Raji (A), HL60 (B), Hela (C), A549 (D), THP1 (E), mouse liver (F), C6 (G), COS7 (H), Jurkat (I) whole cell lysates. (Predicted band size: 26 kD; Observed band size: 83 kD)



Immunohistochemical analysis of TSPAN16 staining in human prostate cancer formalin fixed paraffin embedded tissue section. The section was pre-treated using heat mediated antigen retrieval with sodium citrate buffer (pH 6.0). The section was then incubated with the antibody at room temperature and detected using an HRP conjugated compact polymer system. DAB was used as the chromogen. The section was then counterstained with haematoxylin and mounted with DPX.



Flow cytometric analysis of U937 cells using Anti-TSPAN16 Antibody (green) and negative control (red).

STORAGE

Store at 4°C short term. For long term storage, store at -20°C, avoiding freeze/thaw cycles.

NOTE

For Research Use Only. Not for diagnostic, therapeutics, prophylactic or in vivo use.