

DATASHEET

Alpha-tubulin 4a Mouse Monoclonal Antibody(C3017)

CAT. NO. AMA02629

KEY FEATURES

Target	Alpha-tubulin 4a	Source / Host	Mouse
Reactivity	Human, Mouse, Rat, Monkey	Clonality	Monoclonal
Applications	WB, IHC, FC	Conjugation	Unconjugated
Form / Buffer	Mouse IgG2a. Liquid in PBS, pH 7.3, 30% glycerol, and 0.01% sodium azide.	Storage	at-20°C

BACKGROUND

Tubulin is the major constituent of microtubules, a cylinder consisting of laterally associated linear protofilaments composed of alpha- and beta-tubulin heterodimers. Microtubules grow by the addition of GTP-tubulin dimers to the microtubule end, where a stabilizing cap forms. Below the cap, tubulin dimers are in GDP-bound state, owing to GTPase activity of alpha-tubulin.

APPLICATION

To ensure optimal assay performance, AREX recommends conducting reagent titration tailored to each testing system for optimal detection results.

WB	1:500 - 1:1000
IHC	1:100 - 1:500
FC	1:100 - 1:200

*Results are sample-specific. Please refer to your local assay conditions and test parameters for reference.

PRODUCT OVERVIEW

Description	Mouse monoclonal to Alpha-tubulin 4a
Specificity	Recognizes endogenous levels of Alpha-tubulin 4a protein
Antibody Type	Primary antibody
Immunogen	Recombinant fusion protein of human Alpha-tubulin 4a expressed in E. Coli
Purification	This antibody is purified through a protein G column.
Molecular Weight	Predicted: 50 kD; Observed: 50 kD
Form/Buffer	Mouse IgG2a. Liquid in PBS, pH 7.3, 30% glycerol, and 0.01% sodium azide.
Alternative Names	TUBA1; Tubulin alpha-4A chain; Alpha-tubulin 1; Testis-specific, alpha-tubulin; Tubulin H2-alpha; Tubulin alpha-1 chain
Gene Symbol	TUBA4A
Entrez Gene	7277(Human); 22145(Mouse); 316531(Rat)
SwissProt	P68366(Human); P68368(Mouse); Q5XIF6(Rat)

*AREX continuously optimizes our products. Webpage content may not reflect the latest updates. For inquiries, please contact info@arexbio.com or your local distributor.

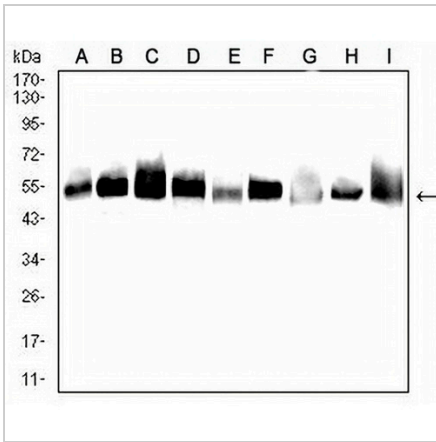
*Clone Number, Reactivity, Source/Host and Clonality can be found in the product name and Key Features section above.

DATASHEET

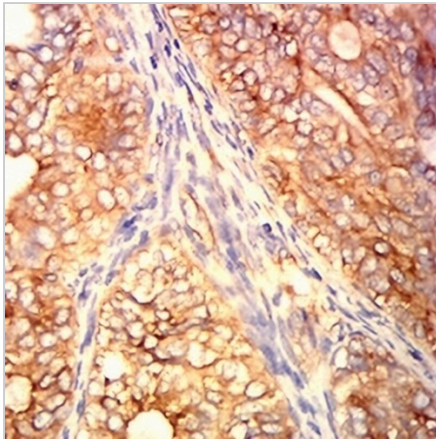
Alpha-tubulin 4a Mouse Monoclonal Antibody(C3017)

CAT. NO. AMA02629

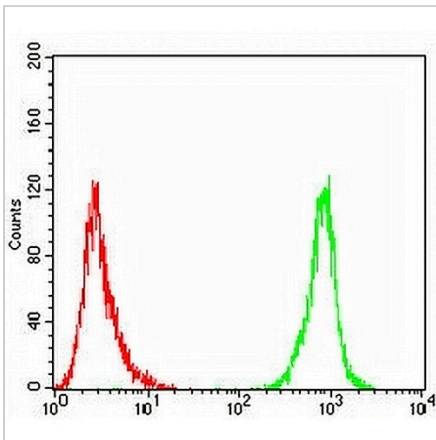
DATA



Western blot analysis of Alpha-tubulin 4a expression in A431 (A), Hela (B), HepG2 (C), Jurkat (D), COS7 (E), C6 (F), NIH3T3 (G), HEK293 (H), HEK293-6e (I) whole cell lysates. (Predicted band size: 50 kD; Observed band size: 50 kD)



Immunohistochemical analysis of Alpha-tubulin 4a staining in human bladder cancer formalin fixed paraffin embedded tissue section. The section was pre-treated using heat mediated antigen retrieval with sodium citrate buffer (pH 6.0). The section was then incubated with the antibody at room temperature and detected using an HRP conjugated compact polymer system. DAB was used as the chromogen. The section was then counterstained with haematoxylin and mounted with DPX.



Flow cytometric analysis of A431 cells using Anti-Alpha-tubulin 4a Antibody (green) and negative control (red).

STORAGE

Store at 4°C short term. For long term storage, store at -20°C, avoiding freeze/thaw cycles.

NOTE

For Research Use Only. Not for diagnostic, therapeutics, prophylactic or in vivo use.