

DATASHEET

Beta2A-tubulin Mouse Monoclonal Antibody(C3019)

CAT. NO. AMA02631

KEY FEATURES

Target	Beta2A-tubulin	Source / Host	Mouse
Reactivity	Human	Clonality	Monoclonal
Applications	WB, FC	Conjugation	Unconjugated
Form / Buffer	Mouse IgG1. Liquid in PBS, pH 7.3, 30% glycerol, and 0.01% sodium azide.	Storage	at-20°C

BACKGROUND

Tubulin is the major constituent of microtubules, a cylinder consisting of laterally associated linear protofilaments composed of alpha- and beta-tubulin heterodimers. Microtubules grow by the addition of GTP-tubulin dimers to the microtubule end, where a stabilizing cap forms. Below the cap, tubulin dimers are in GDP-bound state, owing to GTPase activity of alpha-tubulin.

APPLICATION

To ensure optimal assay performance, AREX recommends conducting reagent titration tailored to each testing system for optimal detection results.

WB	1:500 - 1:1000
FC	1:100 - 1:200

*Results are sample-specific. Please refer to your local assay conditions and test parameters for reference.

PRODUCT OVERVIEW

Description	Mouse monoclonal to Beta2A-tubulin
Specificity	Recognizes endogenous levels of Beta2A-tubulin protein
Antibody Type	Primary antibody
Immunogen	Recombinant fusion protein of human Beta2A-tubulin expressed in E. Coli
Purification	This antibody is purified through a protein G column.
Molecular Weight	Predicted: 50 kD; Observed: 50 kD
Form/Buffer	Mouse IgG1. Liquid in PBS, pH 7.3, 30% glycerol, and 0.01% sodium azide.
Alternative Names	TUBB2; Tubulin beta-2A chain; Tubulin beta class IIa
Gene Symbol	TUBB2A
Entrez Gene	7280(Human)
SwissProt	Q13885(Human)

*AREX continuously optimizes our products. Webpage content may not reflect the latest updates. For inquiries, please contact info@arexbio.com or your local distributor.

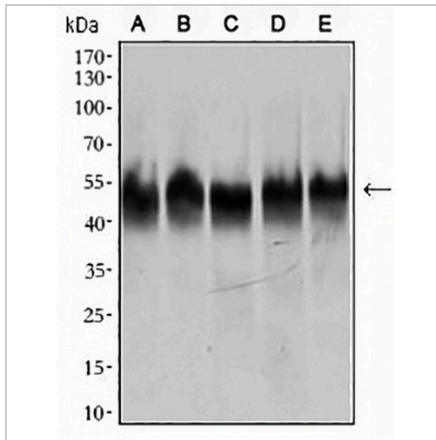
*Clone Number, Reactivity, Source/Host and Clonality can be found in the product name and Key Features section above.

DATASHEET

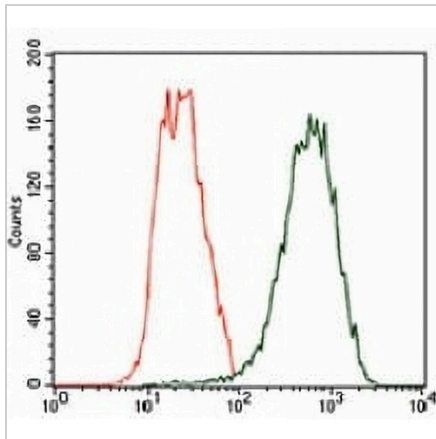
Beta2A-tubulin Mouse Monoclonal Antibody(C3019)

CAT. NO. AMA02631

DATA



Western blot analysis of Beta2A-tubulin expression in HeLa (A), A549 (B), HEK293 (C), Jurkat (D), PC12 (E) whole cell lysates. (Predicted band size: 50 kD; Observed band size: 50 kD)



Flow cytometric analysis of HeLa cells using Anti-Beta2A-tubulin Antibody (green) and negative control (red).

STORAGE

Store at 4°C short term. For long term storage, store at -20°C, avoiding freeze/thaw cycles.

NOTE

For Research Use Only. Not for diagnostic, therapeutics, prophylactic or in vivo use.