

DATASHEET

TWIST Mouse Monoclonal Antibody(C3020)

CAT. NO. AMA02632

KEY FEATURES

Target	TWIST	Source / Host	Mouse
Reactivity	Human, Mouse	Clonality	Monoclonal
Applications	WB, IHC, IF/ICC, FC	Conjugation	Unconjugated
Form / Buffer	Mouse IgG1. Liquid in PBS, pH 7.3, 30% glycerol, and 0.01% sodium azide.	Storage	at-20°C

BACKGROUND

Acts as a transcriptional regulator. Inhibits myogenesis by sequestering E proteins, inhibiting trans-activation by MEF2, and inhibiting DNA-binding by MYOD1 through physical interaction. This interaction probably involves the basic domains of both proteins. Also represses expression of pro-inflammatory cytokines such as TNFA and IL1B. Regulates cranial suture patterning and fusion. Activates transcription as a heterodimer with E proteins. Regulates gene expression differentially, depending on dimer composition. Homodimers induce expression of FGFR2 and POSTN while heterodimers repress FGFR2 and POSTN expression and induce THBS1 expression. Heterodimerization is also required for osteoblast differentiation.

APPLICATION

To ensure optimal assay performance, AREX recommends conducting reagent titration tailored to each testing system for optimal detection results.

WB	1:500 - 1:1000
IHC	1:100 - 1:500
IF/ICC	1:100 - 1:500
FC	1:100 - 1:200

*Results are sample-specific. Please refer to your local assay conditions and test parameters for reference.

PRODUCT OVERVIEW

Description	Mouse monoclonal to TWIST
Specificity	Recognizes endogenous levels of TWIST protein
Antibody Type	Primary antibody
Immunogen	Recombinant fusion protein of human TWIST expressed in E. Coli
Purification	This antibody is purified through a protein G column.
Molecular Weight	Predicted: 21 kD; Observed: 26 kD kD
Form/Buffer	Mouse IgG1. Liquid in PBS, pH 7.3, 30% glycerol, and 0.01% sodium azide.
Alternative Names	BHLHA38; TWIST; Twist-related protein 1; Class A basic, helix-loop-helix protein 38; bHLHa38; H-twist
Gene Symbol	TWIST1
Entrez Gene	7291(Human)
SwissProt	Q15672(Human); P26687(Mouse)

*AREX continuously optimizes our products. Webpage content may not reflect the latest updates. For inquiries, please contact info@arexbio.com or your local distributor.

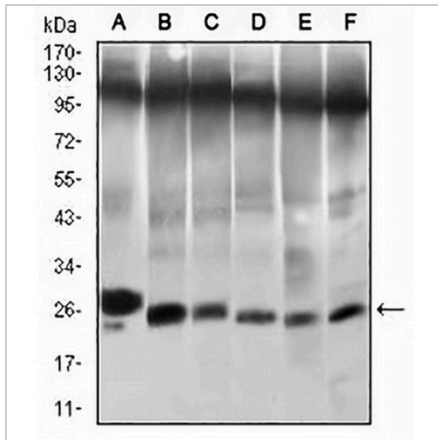
*Clone Number, Reactivity, Source/Host and Clonality can be found in the product name and Key Features section above.

DATASHEET

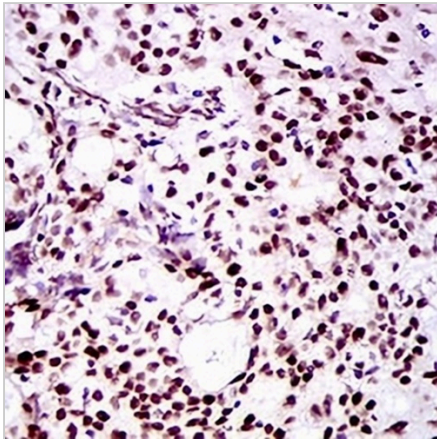
TWIST Mouse Monoclonal Antibody(C3020)

CAT. NO. AMA02632

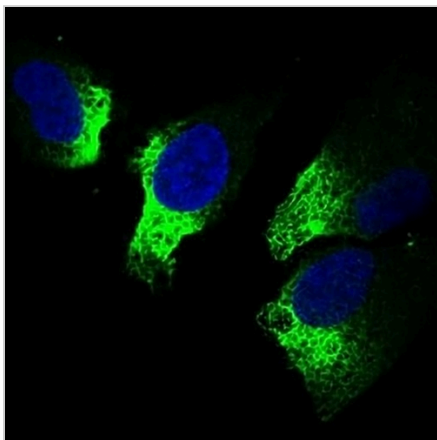
DATA



Western blot analysis of TWIST expression in NIH/3T3 (A), JURKAT (B), Hela (C), A549 (D), Raji (E), OCM1 (F) whole cell lysates. (Predicted band size: 21 kD; Observed band size: 26 kD)



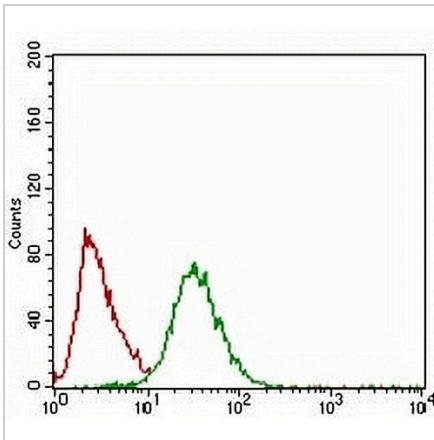
Immunohistochemical analysis of TWIST staining in human cervical cancer formalin fixed paraffin embedded tissue section. The section was pre-treated using heat mediated antigen retrieval with sodium citrate buffer (pH 6.0). The section was then incubated with the antibody at room temperature and detected using an HRP conjugated compact polymer system. DAB was used as the chromogen. The section was then counterstained with haematoxylin and mounted with DPX.



Immunofluorescent analysis of TWIST staining in HeLa cells. Formalin-fixed cells were permeabilized with 0.1% Triton X-100 in TBS for 5-10 minutes and blocked with 3% BSA-PBS for 30 minutes at room temperature. Cells were probed with the primary antibody in 3% BSA-PBS and incubated overnight at 4 °C in a humidified chamber. Cells were washed with PBST and incubated with an AREX® Fluor 488 -conjugated secondary antibody (green) in PBS at room temperature in the dark. Phalloidin - AREX® Fluor 594 was used to stain Actin filaments (red). DAPI was used to stain the cell nuclei (blue).

DATASHEET**TWIST Mouse Monoclonal Antibody(C3020)**

CAT. NO. AMA02632

DATA (CONTINUED)

Flow cytometric analysis of HeLa cells using Anti-TWIST Antibody (green) and negative control (red).

STORAGE

Store at 4°C short term. For long term storage, store at -20°C, avoiding freeze/thaw cycles.

NOTE

For Research Use Only. Not for diagnostic, therapeutics, prophylactic or in vivo use.