

DATASHEET

CD106 Mouse Monoclonal Antibody(C3033)

CAT. NO. AMA02645

KEY FEATURES

Target	CD106	Source / Host	Mouse
Reactivity	Human, Rat, Monkey	Clonality	Monoclonal
Applications	WB, IF/ICC, FC	Conjugation	Unconjugated
Form / Buffer	Mouse IgG1. Liquid in PBS, pH 7.3, 30% glycerol, and 0.01% sodium azide.	Storage	at-20°C

BACKGROUND

Cell adhesion glycoprotein predominantly expressed on the surface of endothelial cells that plays an important role in immune surveillance and inflammation . Acts as a major regulator of leukocyte adhesion to the endothelium through interaction with different types of integrins . During inflammatory responses, binds ligands on the surface of activated endothelial cells to initiate the activation of calcium channels and the plasma membrane-associated small GTPase RAC1 leading to leukocyte transendothelial migration . Also serves as a quality-control checkpoint for entry into bone marrow by providing a 'don't-eat-me' stamping in the context of major histocompatibility complex (MHC) class-I presentation .

APPLICATION

To ensure optimal assay performance, AREX recommends conducting reagent titration tailored to each testing system for optimal detection results.

WB	1:500 - 1:1000
IF/ICC	1:100 - 1:500
FC	1:100 - 1:200

*Results are sample-specific. Please refer to your local assay conditions and test parameters for reference.

PRODUCT OVERVIEW

Description	Mouse monoclonal to CD106
Specificity	Recognizes endogenous levels of CD106 protein
Antibody Type	Primary antibody
Immunogen	Recombinant fusion protein of human CD106 expressed in E. Coli
Purification	This antibody is purified through a protein G column.
Molecular Weight	Predicted: 81 kD; Observed: 100 kD
Form/Buffer	Mouse IgG1. Liquid in PBS, pH 7.3, 30% glycerol, and 0.01% sodium azide.
Alternative Names	L1CAM; Vascular cell adhesion protein 1; V-CAM 1; VCAM-1; INCAM-100; CD106
Gene Symbol	VCAM1
Entrez Gene	7412(Human); 25361(Rat)
SwissProt	P19320(Human); P29534(Rat)

*AREX continuously optimizes our products. Webpage content may not reflect the latest updates. For inquiries, please contact info@arexbio.com or your local distributor.

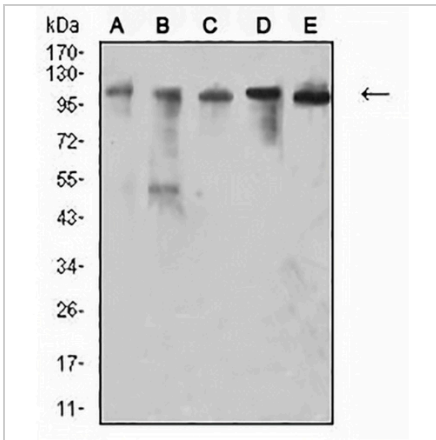
*Clone Number, Reactivity, Source/Host and Clonality can be found in the product name and Key Features section above.

DATASHEET

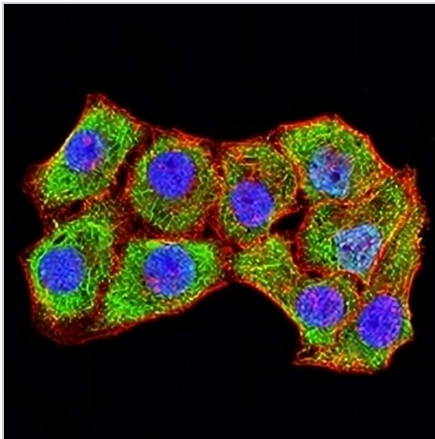
CD106 Mouse Monoclonal Antibody(C3033)

CAT. NO. AMA02645

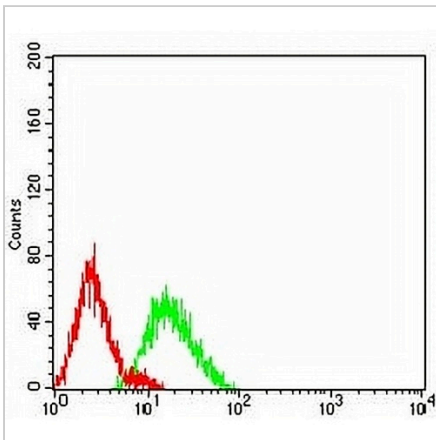
DATA



Western blot analysis of CD106 expression in EC (A), COS7 (B), MCF7 (C), HepG2 (D), HeLa (E) whole cell lysates. (Predicted band size: 81 kD; Observed band size: 100 kD kD)



Immunofluorescent analysis of CD106 staining in HeLa cells. Formalin-fixed cells were permeabilized with 0.1% Triton X-100 in TBS for 5-10 minutes and blocked with 3% BSA-PBS for 30 minutes at room temperature. Cells were probed with the primary antibody in 3% BSA-PBS and incubated overnight at 4 °C in a humidified chamber. Cells were washed with PBST and incubated with an AREX® Fluor 488 -conjugated secondary antibody (green) in PBS at room temperature in the dark. Phalloidin - AREX® Fluor 594 was used to stain Actin filaments (red). DAPI was used to stain the cell nuclei (blue).



Flow cytometric analysis of HL60 cells using Anti-CD106 Antibody (green) and negative control (red).

STORAGE

Store at 4°C short term. For long term storage, store at -20°C, avoiding freeze/thaw cycles.

NOTE

For Research Use Only. Not for diagnostic, therapeutics, prophylactic or in vivo use.