

**DATASHEET**

**Vimentin Mouse Monoclonal Antibody(C3038)**

CAT. NO. AMA02650

**KEY FEATURES**

Target	Vimentin	Source / Host	Mouse
Reactivity	Human, Mouse, Rat	Clonality	Monoclonal
Applications	WB, IHC, FC	Conjugation	Unconjugated
Form / Buffer	Mouse IgG2a. Liquid in PBS, pH 7.3, 30% glycerol, and 0.01% sodium azide.	Storage	at-20°C

**BACKGROUND**

Vimentins are class-III intermediate filaments found in various non-epithelial cells, especially mesenchymal cells. Vimentin is attached to the nucleus, endoplasmic reticulum, and mitochondria, either laterally or terminally. Plays a role in cell directional movement, orientation, cell sheet organization and Golgi complex polarization at the cell migration front . Protects SCRIB from proteasomal degradation and facilitates its localization to intermediate filaments in a cell contact-mediated manner . May promote axon outgrowth and motor fiber repair via DSP-mediated recruitment to outgrowth tips .

**APPLICATION**

To ensure optimal assay performance, AREX recommends conducting reagent titration tailored to each testing system for optimal detection results.

WB	1:500 - 1:1000
IHC	1:100 - 1:500
FC	1:100 - 1:200

\*Results are sample-specific. Please refer to your local assay conditions and test parameters for reference.

**PRODUCT OVERVIEW**

Description	Mouse monoclonal to Vimentin
Specificity	Recognizes endogenous levels of Vimentin protein
Antibody Type	Primary antibody
Immunogen	Recombinant fusion protein of human Vimentin expressed in E. Coli
Purification	This antibody is purified through a protein G column.
Molecular Weight	Predicted: 54 kD; Observed: 53 kD kD
Form/Buffer	Mouse IgG2a. Liquid in PBS, pH 7.3, 30% glycerol, and 0.01% sodium azide.
Alternative Names	Vimentin
Gene Symbol	VIM
Entrez Gene	7431(Human); 22352(Mouse); 81818(Rat)
SwissProt	P08670(Human); P20152(Mouse); P31000(Rat)

\*AREX continuously optimizes our products. Webpage content may not reflect the latest updates. For inquiries, please contact [info@arexbio.com](mailto:info@arexbio.com) or your local distributor.

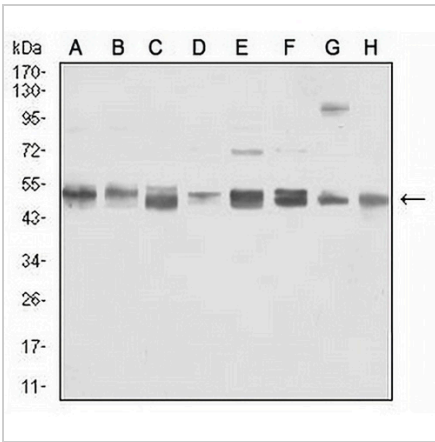
\*Clone Number, Reactivity, Source/Host and Clonality can be found in the product name and Key Features section above.

**DATASHEET**

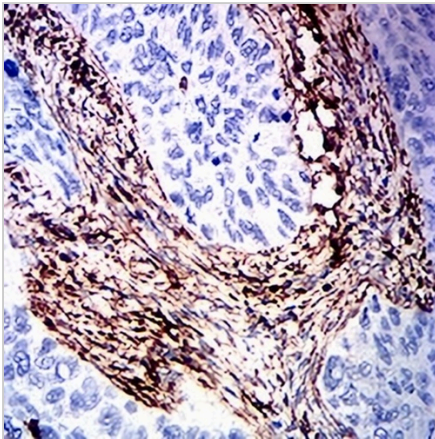
**Vimentin Mouse Monoclonal Antibody(C3038)**

CAT. NO. AMA02650

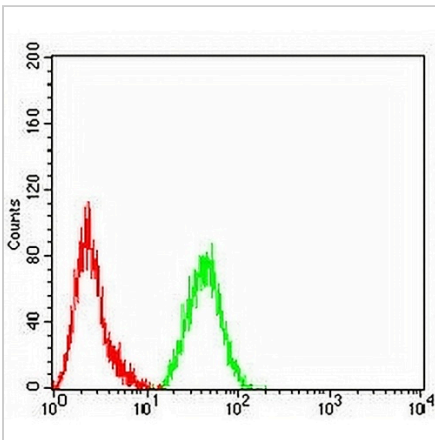
**DATA**



Western blot analysis of Vimentin expression in Jurkat (A), K562 (B), SKNSH (C), SHSY5Y (D), HeLa (E), NIH/3T3 (F), C6 (G), RAW264.7 (H) whole cell lysates. (Predicted band size: 54 kD; Observed band size: 53 kD)



Immunohistochemical analysis of Vimentin staining in human cervical cancer formalin fixed paraffin embedded tissue section. The section was pre-treated using heat mediated antigen retrieval with sodium citrate buffer (pH 6.0). The section was then incubated with the antibody at room temperature and detected using an HRP conjugated compact polymer system. DAB was used as the chromogen. The section was then counterstained with haematoxylin and mounted with DPX.



Flow cytometric analysis of HeLa cells using Anti-Vimentin Antibody (green) and negative control (red).

**STORAGE**

Store at 4°C short term. For long term storage, store at -20°C, avoiding freeze/thaw cycles.

**NOTE**

For Research Use Only. Not for diagnostic, therapeutics, prophylactic or in vivo use.