

DATASHEET

Selenoprotein S Mouse Monoclonal Antibody(C3039)

CAT. NO. AMA02651

KEY FEATURES

Target	Selenoprotein S	Source / Host	Mouse
Reactivity	Human	Clonality	Monoclonal
Applications	WB, IHC	Conjugation	Unconjugated
Form / Buffer	Mouse IgG2b. Liquid in PBS, pH 7.3, 30% glycerol, and 0.01% sodium azide.	Storage	at-20°C

BACKGROUND

Involved in the degradation process of misfolded endoplasmic reticulum (ER) luminal proteins. Participates in the transfer of misfolded proteins from the ER to the cytosol, where they are destroyed by the proteasome in a ubiquitin-dependent manner. Probably acts by serving as a linker between DERL1, which mediates the retrotranslocation of misfolded proteins into the cytosol, and the ATPase complex VCP, which mediates the translocation and ubiquitination.

APPLICATION

To ensure optimal assay performance, AREX recommends conducting reagent titration tailored to each testing system for optimal detection results.

WB	1:500 - 1:1000
IHC	1:100 - 1:500

*Results are sample-specific. Please refer to your local assay conditions and test parameters for reference.

PRODUCT OVERVIEW

Description	Mouse monoclonal to Selenoprotein S
Specificity	Recognizes endogenous levels of Selenoprotein S protein
Antibody Type	Primary antibody
Immunogen	Recombinant fusion protein of human Selenoprotein S expressed in E. Coli
Purification	This antibody is purified through a protein G column.
Molecular Weight	Predicted: 21 kD; Observed: 21 kD
Form/Buffer	Mouse IgG2b. Liquid in PBS, pH 7.3, 30% glycerol, and 0.01% sodium azide.
Alternative Names	SELS; Selenoprotein S; SelS; VCP-interacting membrane protein
Gene Symbol	VIMP
Entrez Gene	55829(Human)
SwissProt	Q9BQE4(Human)

*AREX continuously optimizes our products. Webpage content may not reflect the latest updates. For inquiries, please contact info@arexbio.com or your local distributor.

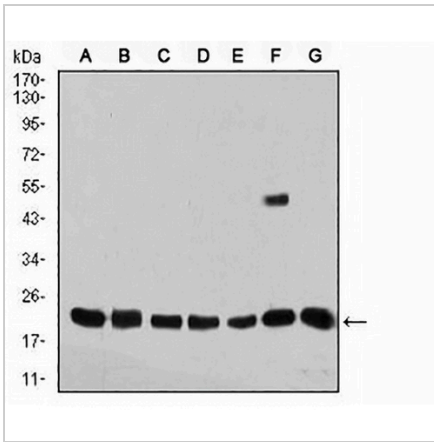
*Clone Number, Reactivity, Source/Host and Clonality can be found in the product name and Key Features section above.

DATASHEET

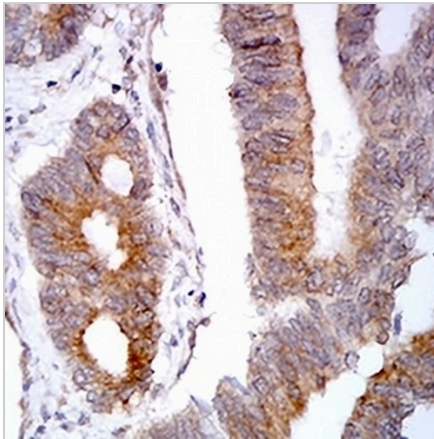
Selenoprotein S Mouse Monoclonal Antibody(C3039)

CAT. NO. AMA02651

DATA



Western blot analysis of Selenoprotein S expression in MCF7 (A), PANC1 (B), Jurkat (C), HepG2 (D), MOLT4 (E), U251 (F), A431 (G) whole cell lysates. (Predicted band size: 21 kD; Observed band size: 21 kD kD)



Immunohistochemical analysis of Selenoprotein S staining in human rectum cancer formalin fixed paraffin embedded tissue section. The section was pre-treated using heat mediated antigen retrieval with sodium citrate buffer (pH 6.0). The section was then incubated with the antibody at room temperature and detected using an HRP conjugated compact polymer system. DAB was used as the chromogen. The section was then counterstained with haematoxylin and mounted with DPX.

STORAGE

Store at 4°C short term. For long term storage, store at -20°C, avoiding freeze/thaw cycles.

NOTE

For Research Use Only. Not for diagnostic, therapeutics, prophylactic or in vivo use.