

## DATASHEET

# WTAP Mouse Monoclonal Antibody(C3041)

CAT. NO. AMA02653

### KEY FEATURES

Target	WTAP	Source / Host	Mouse
Reactivity	Human, Monkey	Clonality	Monoclonal
Applications	WB, IHC, IF/ICC, FC	Conjugation	Unconjugated
Form / Buffer	Mouse IgG1. Liquid in PBS, pH 7.3, 30% glycerol, and 0.01% sodium azide.	Storage	at-20°C

### BACKGROUND

Associated component of the WMM complex, a complex that mediates N6-methyladenosine (m6A) methylation of RNAs, a modification that plays a role in the efficiency of mRNA splicing and RNA processing methylation of RNAs, a modification that plays a role in the efficiency of mRNA splicing and RNA processing . Required for accumulation of METTL3 and METTL14 to nuclear speckle . Acts as a mRNA splicing regulator . Regulates G2/M cell-cycle transition by binding to the 3' UTR of CCNA2, which enhances its stability . Impairs WT1 DNA-binding ability and inhibits expression of WT1 target genes .

### APPLICATION

To ensure optimal assay performance, AREX recommends conducting reagent titration tailored to each testing system for optimal detection results.

WB	1:500 - 1:1000
IHC	1:100 - 1:500
IF/ICC	1:100 - 1:500
FC	1:100 - 1:200

\*Results are sample-specific. Please refer to your local assay conditions and test parameters for reference.

### PRODUCT OVERVIEW

Description	Mouse monoclonal to WTAP
Specificity	Recognizes endogenous levels of WTAP protein
Antibody Type	Primary antibody
Immunogen	Recombinant fusion protein of human WTAP expressed in E. Coli
Purification	This antibody is purified through a protein G column.
Molecular Weight	Predicted: 44 kD; Observed: 60 kD
Form/Buffer	Mouse IgG1. Liquid in PBS, pH 7.3, 30% glycerol, and 0.01% sodium azide.
Alternative Names	KIAA0105; Pre-mRNA-splI,ing regulator WTAP; Female-lethal(2)D homolog; hFL(2)D; WT1-associated protein; Wilms tumor 1-associating protein
Gene Symbol	WTAP
Entrez Gene	9589(Human)
SwissProt	Q15007(Human)

\*AREX continuously optimizes our products. Webpage content may not reflect the latest updates. For inquiries, please contact [info@arexbio.com](mailto:info@arexbio.com) or your local distributor.

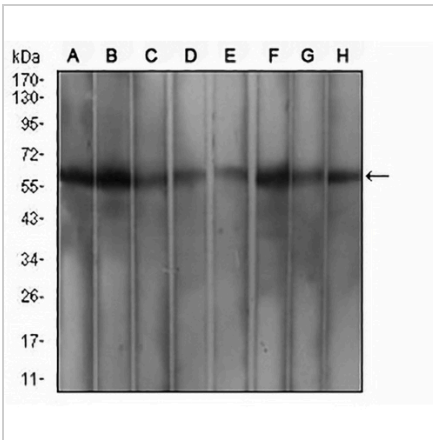
\*Clone Number, Reactivity, Source/Host and Clonality can be found in the product name and Key Features section above.

**DATASHEET**

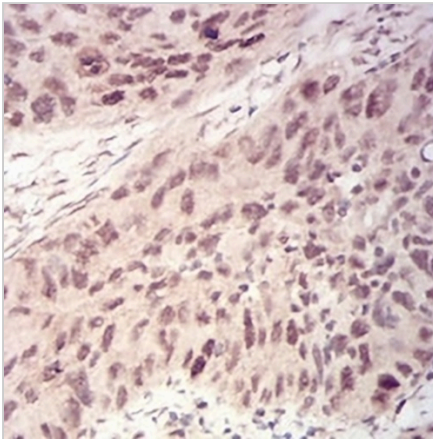
**WTAP Mouse Monoclonal Antibody(C3041)**

CAT. NO. AMA02653

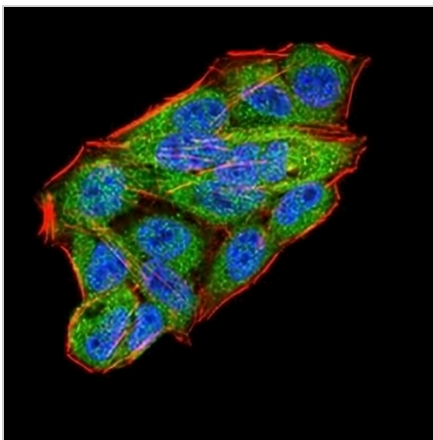
**DATA**



Western blot analysis of WTAP expression in MCF7 (A), HeLa (B), K562 (C), HEK293 (D), A549 (E), HepG2 (F), Jurkat (G), COS7 (H) whole cell lysates. (Predicted band size: 44 kD; Observed band size: 60 kD kD)



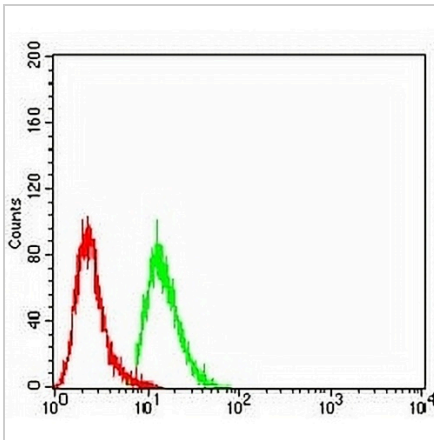
Immunohistochemical analysis of WTAP staining in human cervical cancer formalin fixed paraffin embedded tissue section. The section was pre-treated using heat mediated antigen retrieval with sodium citrate buffer (pH 6.0). The section was then incubated with the antibody at room temperature and detected using an HRP conjugated compact polymer system. DAB was used as the chromogen. The section was then counterstained with haematoxylin and mounted with DPX.



Immunofluorescent analysis of WTAP staining in HeLa cells. Formalin-fixed cells were permeabilized with 0.1% Triton X-100 in TBS for 5-10 minutes and blocked with 3% BSA-PBS for 30 minutes at room temperature. Cells were probed with the primary antibody in 3% BSA-PBS and incubated overnight at 4 °C in a humidified chamber. Cells were washed with PBST and incubated with an AREX® Fluor 488 -conjugated secondary antibody (green) in PBS at room temperature in the dark. Phalloidin - AREX® Fluor 594 was used to stain Actin filaments (red). DAPI was used to stain the cell nuclei (blue).

**DATASHEET****WTAP Mouse Monoclonal Antibody(C3041)**

CAT. NO. AMA02653

**DATA (CONTINUED)**

Flow cytometric analysis of A549 cells using Anti-WTAP Antibody (green) and negative control (red).

**STORAGE**

Store at 4°C short term. For long term storage, store at -20°C, avoiding freeze/thaw cycles.

**NOTE**

For Research Use Only. Not for diagnostic, therapeutics, prophylactic or in vivo use.