

DATASHEET

XRCC1 Mouse Monoclonal Antibody(C3043)

CAT. NO. AMA02655

KEY FEATURES

Target	XRCC1	Source / Host	Mouse
Reactivity	Human, Monkey	Clonality	Monoclonal
Applications	WB, IHC, FC	Conjugation	Unconjugated
Form / Buffer	Mouse IgG1. Liquid in PBS, pH 7.3, 30% glycerol, and 0.01% sodium azide.	Storage	at-20°C

BACKGROUND

Scaffold protein involved in DNA single-strand break repair by mediating the assembly of DNA break repair protein complexes . Negatively regulates ADP-ribosyltransferase activity of PARP1 during base-excision repair in order to prevent excessive PARP1 activity . Recognizes and binds poly-ADP-ribose chains: specifically binds auto-poly-ADP-ribosylated PARP1, limiting its activity .

APPLICATION

To ensure optimal assay performance, AREX recommends conducting reagent titration tailored to each testing system for optimal detection results.

WB	1:500 - 1:1000
IHC	1:100 - 1:500
FC	1:100 - 1:200

*Results are sample-specific. Please refer to your local assay conditions and test parameters for reference.

PRODUCT OVERVIEW

Description	Mouse monoclonal to XRCC1
Specificity	Recognizes endogenous levels of XRCC1 protein
Antibody Type	Primary antibody
Immunogen	Recombinant fusion protein of human XRCC1 expressed in E. Coli
Purification	This antibody is purified through a protein G column.
Molecular Weight	Predicted: 70 kD; Observed: 90 kD
Form/Buffer	Mouse IgG1. Liquid in PBS, pH 7.3, 30% glycerol, and 0.01% sodium azide.
Alternative Names	DNA repair protein XRCC1; X-ray repair cross-complementing protein 1
Gene Symbol	XRCC1
Entrez Gene	7515(Human)
SwissProt	P18887(Human)

*AREX continuously optimizes our products. Webpage content may not reflect the latest updates. For inquiries, please contact info@arexbio.com or your local distributor.

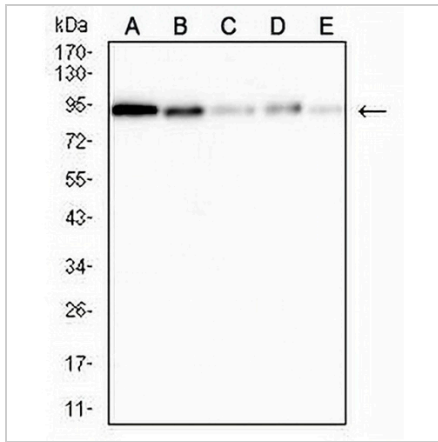
*Clone Number, Reactivity, Source/Host and Clonality can be found in the product name and Key Features section above.

DATASHEET

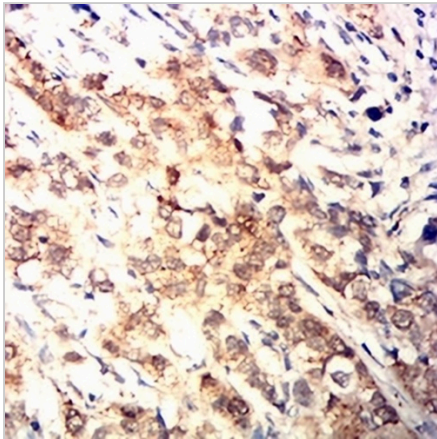
XRCC1 Mouse Monoclonal Antibody(C3043)

CAT. NO. AMA02655

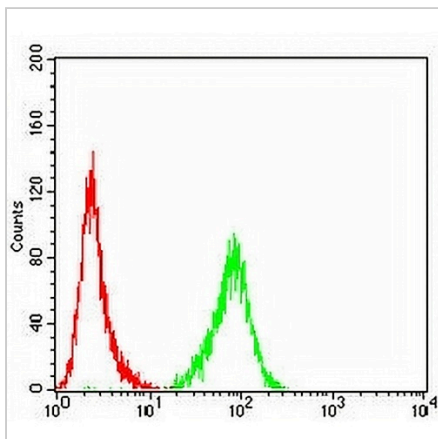
DATA



Western blot analysis of XRCC1 expression in HeLa (A), Jurkat (B), k562 (C), SKOV3 (D), COS7 (E) whole cell lysates. (Predicted band size: 70 kD; Observed band size: 90 kD)



Immunohistochemical analysis of XRCC1 staining in human bladder cancer formalin fixed paraffin embedded tissue section. The section was pre-treated using heat mediated antigen retrieval with sodium citrate buffer (pH 6.0). The section was then incubated with the antibody at room temperature and detected using an HRP conjugated compact polymer system. DAB was used as the chromogen. The section was then counterstained with haematoxylin and mounted with DPX.



Flow cytometric analysis of Jurkat cells using Anti-XRCC1 Antibody (green) and negative control (red).

STORAGE

Store at 4°C short term. For long term storage, store at -20°C, avoiding freeze/thaw cycles.

NOTE

For Research Use Only. Not for diagnostic, therapeutics, prophylactic or in vivo use.