

## DATASHEET

# REX-1 Mouse Monoclonal Antibody(C3051)

CAT. NO. AMA02663

### KEY FEATURES

Target	REX-1	Source / Host	Mouse
Reactivity	Human, Mouse	Clonality	Monoclonal
Applications	WB, IHC, FC	Conjugation	Unconjugated
Form / Buffer	Mouse IgG1. Liquid in PBS, pH 7.3, 30% glycerol, and 0.01% sodium azide.	Storage	at-20°C

### BACKGROUND

Involved in the reprogramming of X-chromosome inactivation during the acquisition of pluripotency. Required for efficient elongation of TSIX, a non-coding RNA antisense to XIST. Binds DXPas34 enhancer within the TSIX promoter. Involved in ES cell self-renewal .

### APPLICATION

To ensure optimal assay performance, AREX recommends conducting reagent titration tailored to each testing system for optimal detection results.

WB	1:500 - 1:1000
IHC	1:100 - 1:500
FC	1:100 - 1:200

\*Results are sample-specific. Please refer to your local assay conditions and test parameters for reference.

### PRODUCT OVERVIEW

Description	Mouse monoclonal to REX-1
Specificity	Recognizes endogenous levels of REX-1 protein
Antibody Type	Primary antibody
Immunogen	Recombinant fusion protein of human REX-1 expressed in E. Coli
Purification	This antibody is purified through a protein G column.
Molecular Weight	Predicted: 35 kD; Observed: 32 kD
Form/Buffer	Mouse IgG1. Liquid in PBS, pH 7.3, 30% glycerol, and 0.01% sodium azide.
Alternative Names	REX1; ZNF754; Zinc finger protein 42 homolog; Zfp-42; Reduced expression protein 1; REX-1; hREX-1; Zinc finger protein 754
Gene Symbol	ZFP42
Entrez Gene	132625(Human)
SwissProt	Q96MM3(Human); P22227(Mouse)

\*AREX continuously optimizes our products. Webpage content may not reflect the latest updates. For inquiries, please contact [info@arexbio.com](mailto:info@arexbio.com) or your local distributor.

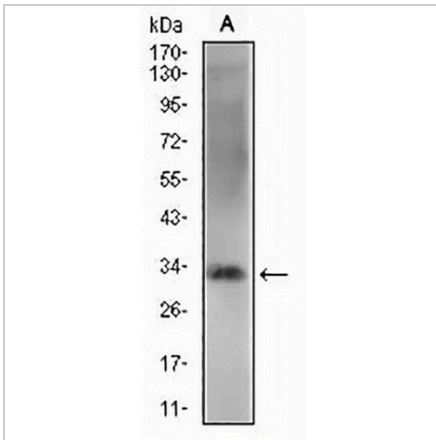
\*Clone Number, Reactivity, Source/Host and Clonality can be found in the product name and Key Features section above.

**DATASHEET**

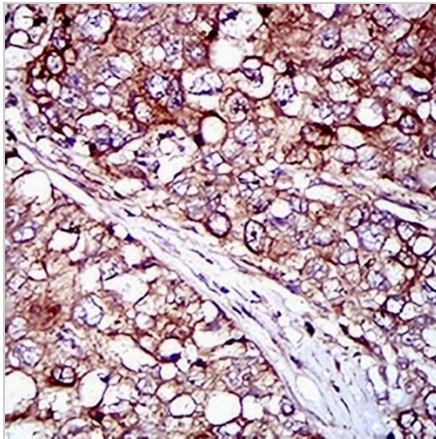
**REX-1 Mouse Monoclonal Antibody(C3051)**

CAT. NO. AMA02663

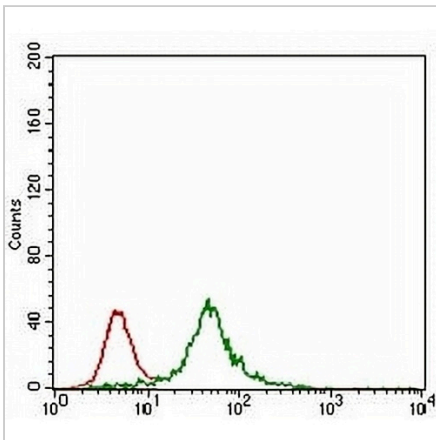
**DATA**



Western blot analysis of REX-1 expression in NIH/3T3 (A) whole cell lysates. (Predicted band size: 35 kD; Observed band size: 32 kD)



Immunohistochemical analysis of REX-1 staining in human lung cancer formalin fixed paraffin embedded tissue section. The section was pre-treated using heat mediated antigen retrieval with sodium citrate buffer (pH 6.0). The section was then incubated with the antibody at room temperature and detected using an HRP conjugated compact polymer system. DAB was used as the chromogen. The section was then counterstained with haematoxylin and mounted with DPX.



Flow cytometric analysis of HEK293 cells using Anti-REX-1 Antibody (green) and negative control (red).

**STORAGE**

Store at 4°C short term. For long term storage, store at -20°C, avoiding freeze/thaw cycles.

**NOTE**

For Research Use Only. Not for diagnostic, therapeutics, prophylactic or in vivo use.