

## DATASHEET

# IKB alpha Rabbit Monoclonal Antibody(C3066)

CAT. NO. AMA02678

### KEY FEATURES

Target	IKB alpha	Source / Host	Rabbit
Reactivity	Human, Rat	Clonality	Monoclonal
Applications	WB	Conjugation	Unconjugated
Form / Buffer	Liquid in 50mM Tris-Glycine (pH 7.4), 0.15M NaCl, 50% Glycerol, 0.01% Sodium azide and 0.05% BSA.	Storage	at-20°C

### BACKGROUND

Inhibits the activity of dimeric NF-kappa-B/REL complexes by trapping REL (RELA/p65 and NFKB1/p50) dimers in the cytoplasm by masking their nuclear localization signals dimers in the cytoplasm by masking their nuclear localization signals . On cellular stimulation by immune and pro-inflammatory responses, becomes phosphorylated promoting ubiquitination and degradation, enabling the dimeric RELA to translocate to the nucleus and activate transcription .

### APPLICATION

To ensure optimal assay performance, AREX recommends conducting reagent titration tailored to each testing system for optimal detection results.

WB	1:500 - 1:1000
----	----------------

\*Results are sample-specific. Please refer to your local assay conditions and test parameters for reference.

### PRODUCT OVERVIEW

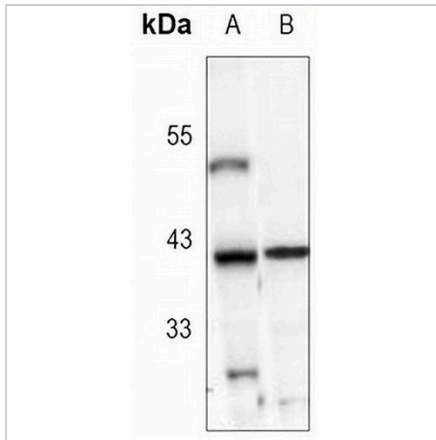
Description	Rabbit monoclonal antibody to IKB alpha
Specificity	Recognizes endogenous levels of IKB alpha protein.
Antibody Type	Primary antibody
Immunogen	A synthetic peptide of human IKB alpha
Purification	The antibody was purified by immunogen affinity chromatography.
Molecular Weight	Predicted: 36 kD; Observed: 39 kD
Form/Buffer	Liquid in 50mM Tris-Glycine (pH 7.4), 0.15M NaCl, 50% Glycerol, 0.01% Sodium azide and 0.05% BSA.
Alternative Names	IKBA; MAD3; NFKBI; NF-kappa-B inhibitor alpha; I-kappa-B-alpha; IKB-alpha; IkappaBalpaha; Major histocompatibility complex enhancer-binding protein MAD3
Gene Symbol	NFKBIA
Entrez Gene	4792(Human); 25493(Rat)
SwissProt	P25963(Human); Q63746(Rat)

\*AREX continuously optimizes our products. Webpage content may not reflect the latest updates. For inquiries, please contact [info@arexbio.com](mailto:info@arexbio.com) or your local distributor.

\*Clone Number, Reactivity, Source/Host and Clonality can be found in the product name and Key Features section above.

**DATASHEET****IKB alpha Rabbit Monoclonal Antibody(C3066)**

CAT. NO. AMA02678

**DATA**

Western blot analysis of IKB alpha expression in Jurkat (A), C6 (B) whole cell lysates. (Predicted band size: 36 kD; Observed band size: 39 kD)

**STORAGE**

Store at 4°C short term. For long term storage, store at -20°C, avoiding freeze/thaw cycles.

**NOTE**

For Research Use Only. Not for diagnostic, therapeutics, prophylactic or in vivo use.