

DATASHEET

ABCE1 Rabbit Monoclonal Antibody(C3069)

CAT. NO. AMA02681

KEY FEATURES

Target	ABCE1	Source / Host	Rabbit
Reactivity	Human, Mouse, Rat	Clonality	Monoclonal
Applications	WB, IP	Conjugation	Unconjugated
Form / Buffer	Liquid in 50mM Tris-Glycine (pH 7.4), 0.15M NaCl, 50% Glycerol, 0.01% Sodium azide and 0.05% BSA.	Storage	at-20°C

BACKGROUND

Nucleoside-triphosphatase (NTPase) involved in ribosome recycling by mediating ribosome disassembly involved in ribosome recycling by mediating ribosome disassembly . Able to hydrolyze ATP, GTP, UTP and CTP . Splits ribosomes into free 60S subunits and tRNA- and mRNA-bound 40S subunits . Acts either after canonical termination facilitated by release factors (ETF1/eRF1) or after recognition of stalled and vacant ribosomes by mRNA surveillance factors (PELO/Pelota) . Involved in the No-Go Decay (NGD) pathway: recruited to stalled ribosomes by the Pelota-HBS1L complex, and drives the disassembly of stalled ribosomes, followed by degradation of damaged mRNAs as part of the NGD pathway . Also plays a role in quality control of translation of mitochondrial outer membrane-localized mRNA .

APPLICATION

To ensure optimal assay performance, AREX recommends conducting reagent titration tailored to each testing system for optimal detection results.

WB	1:500 - 1:1000
IP	1:10 - 1:50

*Results are sample-specific. Please refer to your local assay conditions and test parameters for reference.

PRODUCT OVERVIEW

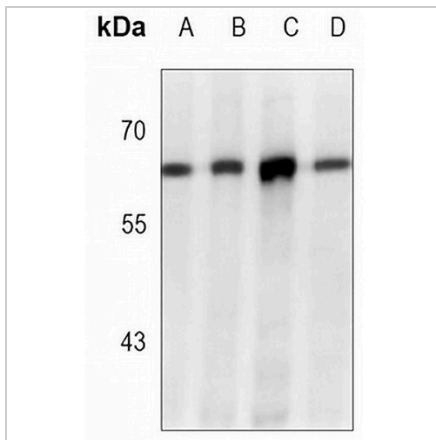
Description	Rabbit monoclonal antibody to ABCE1
Specificity	Recognizes endogenous levels of ABCE1 protein.
Antibody Type	Primary antibody
Immunogen	A synthetic peptide of human ABCE1
Purification	The antibody was purified by immunogen affinity chromatography.
Molecular Weight	Predicted: 67 kD; Observed: 67 kD
Form/Buffer	Liquid in 50mM Tris-Glycine (pH 7.4), 0.15M NaCl, 50% Glycerol, 0.01% Sodium azide and 0.05% BSA.
Alternative Names	RLI; RNASEL1; RNASELI; RNS4I; ATP-binding cassette sub-family E member 1; 2'-5'-oligoadenylate-binding protein; HuHP68; RNase L inhibitor; Ribonuclease 4 inhibitor; RNS4I
Gene Symbol	ABCE1
Entrez Gene	6059(Human); 24015(Mouse)
SwissProt	P61221(Human); P61222(Mouse)

*AREX continuously optimizes our products. Webpage content may not reflect the latest updates. For inquiries, please contact info@arexbio.com or your local distributor.

*Clone Number, Reactivity, Source/Host and Clonality can be found in the product name and Key Features section above.

DATASHEET**ABCE1 Rabbit Monoclonal Antibody(C3069)**

CAT. NO. AMA02681

DATA

Western blot analysis of ABCE1 expression in K562 (A), C6 (B), NIH3T3 (C), HeLa (D) whole cell lysates. (Predicted band size: 67 kD; Observed band size: 67 kD)

STORAGE

Store at 4°C short term. For long term storage, store at -20°C, avoiding freeze/thaw cycles.

NOTE

For Research Use Only. Not for diagnostic, therapeutics, prophylactic or in vivo use.