

DATASHEET

IRE1 Mouse Monoclonal Antibody(C3073)

CAT. NO. AMA02685

KEY FEATURES

Target	IRE1	Source / Host	Mouse
Reactivity	Human	Clonality	Monoclonal
Applications	WB, IHC	Conjugation	Unconjugated
Form / Buffer	Liquid in 0.42% Potassium phosphate, 0.87% Sodium chloride, pH 7.3, 30% glycerol, and 0.01% sodium azide.		Storage at-20°C

BACKGROUND

Serine/threonine-protein kinase and endoribonuclease that acts as a key sensor for the endoplasmic reticulum unfolded protein response (UPR) . In unstressed cells, the endoplasmic reticulum luminal domain is maintained in its inactive monomeric state by binding to the endoplasmic reticulum chaperone HSPA5/BiP . Accumulation of misfolded proteins in the endoplasmic reticulum causes release of HSPA5/BiP, allowing the luminal domain to homodimerize, promoting autophosphorylation of the kinase domain and subsequent activation of the endoribonuclease activity . The endoribonuclease activity is specific for XBP1 mRNA and excises 26 nucleotides from XBP1 mRNA . The resulting spliced transcript of XBP1 encodes a transcriptional activator protein that up-regulates expression of UPR target genes .

APPLICATION

To ensure optimal assay performance, AREX recommends conducting reagent titration tailored to each testing system for optimal detection results.

WB	1:500 - 1:1000
IHC	1:100 - 1:500

*Results are sample-specific. Please refer to your local assay conditions and test parameters for reference.

PRODUCT OVERVIEW

Description	Mouse monoclonal antibody to IRE1
Specificity	Recognizes endogenous levels of IRE1 protein.
Antibody Type	Primary antibody
Immunogen	Purified recombinant fragment of human IRE1 expressed in E. Coli.
Purification	The antibody was purified by immunogen affinity chromatography.
Molecular Weight	Predicted: 109 kD; Observed: 109 kD
Form/Buffer	Liquid in 0.42% Potassium phosphate, 0.87% Sodium chloride, pH 7.3, 30% glycerol, and 0.01% sodium azide.
Alternative Names	IRE1; Serine/threonine-protein kinase/endoribonuclease IRE1; Endoplasmic reticulum-to-nucleus signaling 1; Inositol-requiring protein 1; hIRE1p; Ire1-alpha; IRE1a
Gene Symbol	ERN1
Entrez Gene	2081(Human)
SwissProt	O75460(Human)

*AREX continuously optimizes our products. Webpage content may not reflect the latest updates. For inquiries, please contact info@arexbio.com or your local distributor.

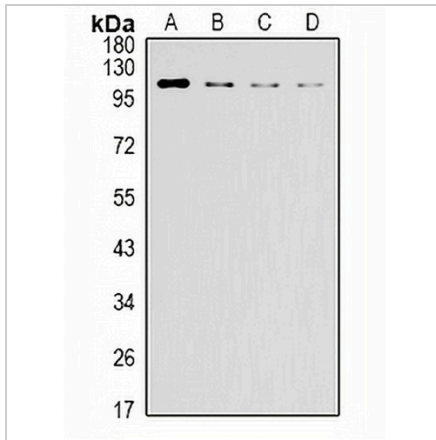
*Clone Number, Reactivity, Source/Host and Clonality can be found in the product name and Key Features section above.

DATASHEET

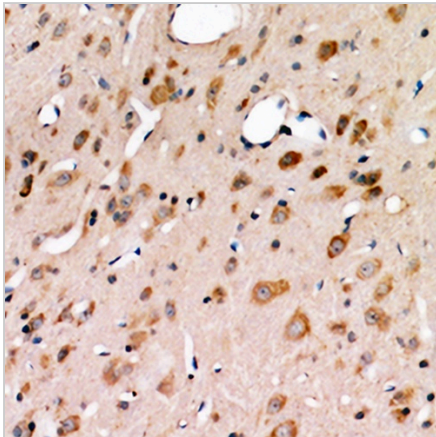
IRE1 Mouse Monoclonal Antibody(C3073)

CAT. NO. AMA02685

DATA



Western blot analysis of IRE1 expression in Raji (A), Jurkat (B), HeLa(C), HEK293T (D) whole cell lysates. (Predicted band size: 109 kD; Observed band size: 109 kD)



Immunohistochemical analysis of IRE1 staining in human brain formalin fixed paraffin embedded tissue section. The section was pre-treated using heat mediated antigen retrieval with sodium citrate buffer (pH 6.0). The section was then incubated with the antibody at room temperature and detected using an HRP conjugated compact polymer system. DAB was used as the chromogen. The section was then counterstained with haematoxylin and mounted with DPX.

STORAGE

Store at 4°C short term. For long term storage, store at -20°C, avoiding freeze/thaw cycles.

NOTE

For Research Use Only. Not for diagnostic, therapeutics, prophylactic or in vivo use.