

**DATASHEET**

**Apolipoprotein E Receptor 2 Rabbit Monoclonal Antibody(C3122)**

CAT. NO. AMA02734

**KEY FEATURES**

Target	Apolipoprotein E Receptor 2	Source / Host	Rabbit
Reactivity	Human, Rat, Hamster	Clonality	Monoclonal
Applications	WB, IP	Conjugation	Unconjugated
Form / Buffer	Liquid in 50mM Tris-Glycine (pH 7.4), 0.15M NaCl, 50% Glycerol, 0.01% Sodium azide and 0.05% BSA.	Storage	at-20°C

**BACKGROUND**

Cell surface receptor for Reelin (RELN) and apolipoprotein E (apoE)-containing ligands and apolipoprotein E (apoE)-containing ligands . LRP8 participates in transmitting the extracellular Reelin signal to intracellular signaling processes, by binding to DAB1 on its cytoplasmic tail . Reelin acts via both the VLDL receptor (VLDLR) and LRP8 to regulate DAB1 tyrosine phosphorylation and microtubule function in neurons . LRP8 has higher affinity for Reelin than VLDLR . LRP8 is thus a key component of the Reelin pathway which governs neuronal layering of the forebrain during embryonic brain development . Binds the endoplasmic reticulum resident receptor-associated protein (RAP) .

**APPLICATION**

To ensure optimal assay performance, AREX recommends conducting reagent titration tailored to each testing system for optimal detection results.

WB	1:500 - 1:1000
IP	1:10 - 1:50

\*Results are sample-specific. Please refer to your local assay conditions and test parameters for reference.

**PRODUCT OVERVIEW**

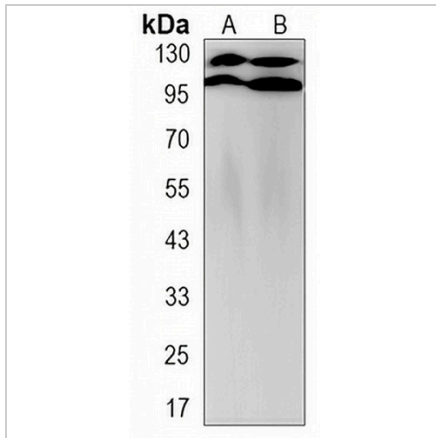
Description	Rabbit monoclonal antibody to Apolipoprotein E Receptor 2
Specificity	Recognizes endogenous levels of Apolipoprotein E Receptor 2 protein.
Antibody Type	Primary antibody
Immunogen	A synthetic peptide of human ApoER2
Purification	The antibody was purified by immunogen affinity chromatography.
Molecular Weight	Predicted: 106 kD; Observed: 130,106 kD
Form/Buffer	Liquid in 50mM Tris-Glycine (pH 7.4), 0.15M NaCl, 50% Glycerol, 0.01% Sodium azide and 0.05% BSA.
Alternative Names	APOER2; Low-density lipoprotein receptor-related protein 8; LRP-8; Apolipoprotein E receptor 2
Gene Symbol	LRP8
Entrez Gene	7804(Human)
SwissProt	Q14114(Human)

\*AREX continuously optimizes our products. Webpage content may not reflect the latest updates. For inquiries, please contact [info@arexbio.com](mailto:info@arexbio.com) or your local distributor.

\*Clone Number, Reactivity, Source/Host and Clonality can be found in the product name and Key Features section above.

**DATASHEET****Apolipoprotein E Receptor 2 Rabbit Monoclonal Antibody(C3122)**

CAT. NO. AMA02734

**DATA**

Western blot analysis of Apolipoprotein E Receptor 2 expression in CHOK1 (A), C6 (B) whole cell lysates. (Predicted band size: 106 kD; Observed band size: 130,106 kD)

**STORAGE**

Store at 4°C short term. For long term storage, store at -20°C, avoiding freeze/thaw cycles.

**NOTE**

For Research Use Only. Not for diagnostic, therapeutics, prophylactic or in vivo use.