

## DATASHEET

# eIF2C2 Rabbit Monoclonal Antibody(C3123)

CAT. NO. AMA02735

### KEY FEATURES

Target	eIF2C2	Source / Host	Rabbit
Reactivity	Human, Mouse, Rat	Clonality	Monoclonal
Applications	WB	Conjugation	Unconjugated
Form / Buffer	Liquid in 50mM Tris-Glycine (pH 7.4), 0.15M NaCl, 50% Glycerol, 0.01% Sodium azide and 0.05% BSA.	Storage	at-20°C

### BACKGROUND

Required for RNA-mediated gene silencing (RNAi) by the RNA-induced silencing complex (RISC). The 'minimal RISC' appears to include AGO2 bound to a short guide RNA such as a microRNA (miRNA) or short interfering RNA (siRNA). These guide RNAs direct RISC to complementary mRNAs that are targets for RISC-mediated gene silencing. The precise mechanism of gene silencing depends on the degree of complementarity between the miRNA or siRNA and its target. Binding of RISC to a perfectly complementary mRNA generally results in silencing due to endonucleolytic cleavage of the mRNA specifically by AGO2. Binding of RISC to a partially complementary mRNA results in silencing through inhibition of translation, and this is independent of endonuclease activity.

### APPLICATION

To ensure optimal assay performance, AREX recommends conducting reagent titration tailored to each testing system for optimal detection results.

WB	1:500 - 1:1000
----	----------------

\*Results are sample-specific. Please refer to your local assay conditions and test parameters for reference.

### PRODUCT OVERVIEW

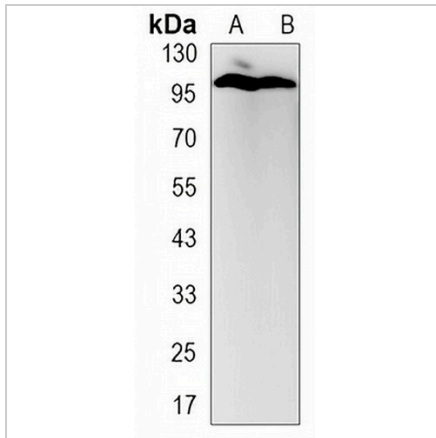
Description	Rabbit monoclonal antibody to eIF2C2
Specificity	Recognizes endogenous levels of eIF2C2 protein.
Antibody Type	Primary antibody
Immunogen	A synthetic peptide of human Argonaute-2
Purification	The antibody was purified by immunogen affinity chromatography.
Molecular Weight	Predicted: 97 kD; Observed: 97 kD
Form/Buffer	Liquid in 50mM Tris-Glycine (pH 7.4), 0.15M NaCl, 50% Glycerol, 0.01% Sodium azide and 0.05% BSA.
Alternative Names	EIF2C2; Protein argonaute-2; Argonaute2; hAgo2; Argonaute RISC catalytic component 2; Eukaryotic translation initiation factor 2C 2; eIF-2C 2; eIF2C 2; PAZ Piwi domain protein; PPD; Protein slicer
Gene Symbol	AGO2
Entrez Gene	27161(Human); 239528(Mouse); 59117(Rat)
SwissProt	Q9UKV8(Human); Q8CJG0(Mouse); Q9QZ81(Rat)

\*AREX continuously optimizes our products. Webpage content may not reflect the latest updates. For inquiries, please contact [info@arexbio.com](mailto:info@arexbio.com) or your local distributor.

\*Clone Number, Reactivity, Source/Host and Clonality can be found in the product name and Key Features section above.

**DATASHEET****eIF2C2 Rabbit Monoclonal Antibody(C3123)**

CAT. NO. AMA02735

**DATA**

Western blot analysis of eIF2C2 expression in PC3 (A), C6 (B) whole cell lysates. (Predicted band size: 97 kD; Observed band size: 97 kD)

**STORAGE**

Store at 4°C short term. For long term storage, store at -20°C, avoiding freeze/thaw cycles.

**NOTE**

For Research Use Only. Not for diagnostic, therapeutics, prophylactic or in vivo use.