

DATASHEET

HSF1 Rabbit Monoclonal Antibody(C3161)

CAT. NO. AMA02773

KEY FEATURES

| | | | |
|---------------|---|---------------|--------------|
| Target | HSF1 | Source / Host | Rabbit |
| Reactivity | Human | Clonality | Monoclonal |
| Applications | WB, IHC, IP | Conjugation | Unconjugated |
| Form / Buffer | Liquid in 50mM Tris-Glycine (pH 7.4), 0.15M NaCl, 50% Glycerol, 0.01% Sodium azide and 0.05% BSA. | Storage | at-20°C |

BACKGROUND

Functions as a stress-inducible and DNA-binding transcription factor that plays a central role in the transcriptional activation of the heat shock response (HSR), leading to the expression of a large class of molecular chaperones, heat shock proteins (HSPs), that protect cells from cellular insult damage , leading to the expression of a large class of molecular chaperones, heat shock proteins (HSPs), that protect cells from cellular insult damage . In unstressed cells, is present in a HSP90-containing multichaperone complex that maintains it in a non-DNA-binding inactivated monomeric form .

APPLICATION

To ensure optimal assay performance, AREX recommends conducting reagent titration tailored to each testing system for optimal detection results.

| | |
|-----|----------------|
| WB | 1:500 - 1:1000 |
| IHC | 1:50 - 1:100 |
| IP | 1:10 - 1:50 |

*Results are sample-specific. Please refer to your local assay conditions and test parameters for reference.

PRODUCT OVERVIEW

| | |
|-------------------|---|
| Description | Rabbit monoclonal antibody to HSF1 |
| Specificity | Recognizes endogenous levels of HSF1 protein. |
| Antibody Type | Primary antibody |
| Immunogen | A synthetic peptide of human HSF1 |
| Purification | The antibody was purified by immunogen affinity chromatography. |
| Molecular Weight | Predicted: 57 kD; Observed: 80 kD |
| Form/Buffer | Liquid in 50mM Tris-Glycine (pH 7.4), 0.15M NaCl, 50% Glycerol, 0.01% Sodium azide and 0.05% BSA. |
| Alternative Names | HSTF1; Heat shock factor protein 1; HSF 1; Heat shock transcription factor 1; HSTF 1 |
| Gene Symbol | HSF1 |
| Entrez Gene | 3297(Human) |
| SwissProt | Q00613(Human) |

*AREX continuously optimizes our products. Webpage content may not reflect the latest updates. For inquiries, please contact info@arexbio.com or your local distributor.

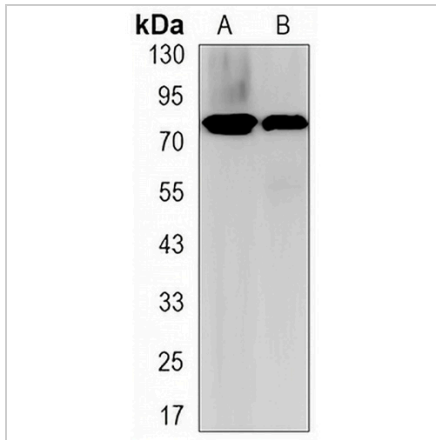
*Clone Number, Reactivity, Source/Host and Clonality can be found in the product name and Key Features section above.

DATASHEET

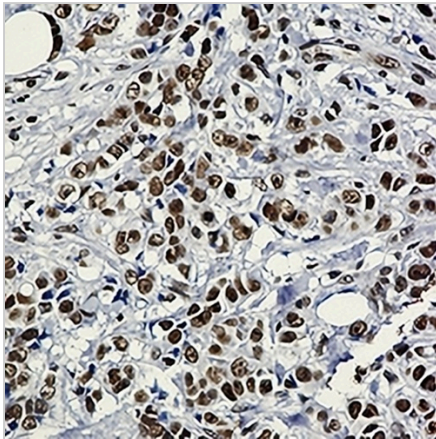
HSF1 Rabbit Monoclonal Antibody(C3161)

CAT. NO. AMA02773

DATA



Western blot analysis of HSF1 expression in HeLa (A), Jurkat (B) whole cell lysates. (Predicted band size: 57 kD; Observed band size: 80 kD)



Immunohistochemical analysis of HSF1 staining in human breast carcinoma formalin fixed paraffin embedded tissue section. The section was pre-treated using heat mediated antigen retrieval with sodium citrate buffer (pH 6.0). The section was then incubated with the antibody at room temperature and detected using an HRP conjugated compact polymer system. DAB was used as the chromogen. The section was then counterstained with haematoxylin and mounted with DPX.

STORAGE

Store at 4°C short term. For long term storage, store at -20°C, avoiding freeze/thaw cycles.

NOTE

For Research Use Only. Not for diagnostic, therapeutics, prophylactic or in vivo use.