

DATASHEET

ILF3 Rabbit Monoclonal Antibody(C3164)

CAT. NO. AMA02776

KEY FEATURES

Target	ILF3	Source / Host	Rabbit
Reactivity	Human, Rat	Clonality	Monoclonal
Applications	WB, IHC, IF/ICC, IP	Conjugation	Unconjugated
Form / Buffer	Liquid in 50mM Tris-Glycine (pH 7.4), 0.15M NaCl, 50% Glycerol, 0.01% Sodium azide and 0.05% BSA.	Storage	at-20°C

BACKGROUND

RNA-binding protein that plays an essential role in the biogenesis of circular RNAs (circRNAs) which are produced by back-splicing circularization of pre-mRNAs. Within the nucleus, promotes circRNAs processing by stabilizing the regulatory elements residing in the flanking introns of the circularized exons. Plays thereby a role in the back-splicing of a subset of circRNAs which are produced by back-splicing circularization of pre-mRNAs. Within the nucleus, promotes circRNAs processing by stabilizing the regulatory elements residing in the flanking introns of the circularized exons. Plays thereby a role in the back-splicing of a subset of circRNAs. As a consequence, participates in a wide range of transcriptional and post-transcriptional processes.

APPLICATION

To ensure optimal assay performance, AREX recommends conducting reagent titration tailored to each testing system for optimal detection results.

WB	1:500 - 1:1000
IHC	1:50 - 1:100
IF/ICC	1:50 - 1:100
IP	1:10 - 1:50

*Results are sample-specific. Please refer to your local assay conditions and test parameters for reference.

PRODUCT OVERVIEW

Description	Rabbit monoclonal antibody to ILF3
Specificity	Recognizes endogenous levels of ILF3 protein.
Antibody Type	Primary antibody
Immunogen	A synthetic peptide of human ILF3
Purification	The antibody was purified by immunogen affinity chromatography.
Molecular Weight	Predicted: 95 kD; Observed: 95 kD
Form/Buffer	Liquid in 50mM Tris-Glycine (pH 7.4), 0.15M NaCl, 50% Glycerol, 0.01% Sodium azide and 0.05% BSA.
Alternative Names	DRBF; MPHOSPH4; NF90; Interleukin enhancer-binding factor 3; Double-stranded RNA-binding protein 76; DRBP76; M-phase phosphoprotein 4; MPP4; Nuclear factor associated with dsRNA; NFAR; Nuclear factor of activated T-cells 90 kDa; NF-AT-90; Translational control protein 80; TCP80
Gene Symbol	ILF3
Entrez Gene	3609(Human); 84472(Rat)
SwissProt	Q12906(Human); Q9JIL3(Rat)

*AREX continuously optimizes our products. Webpage content may not reflect the latest updates. For inquiries, please contact info@arexbio.com or your local distributor.

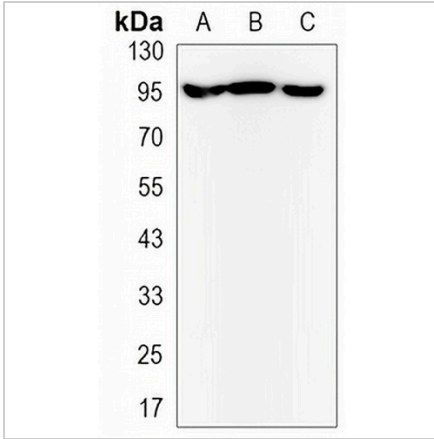
*Clone Number, Reactivity, Source/Host and Clonality can be found in the product name and Key Features section above.

DATASHEET

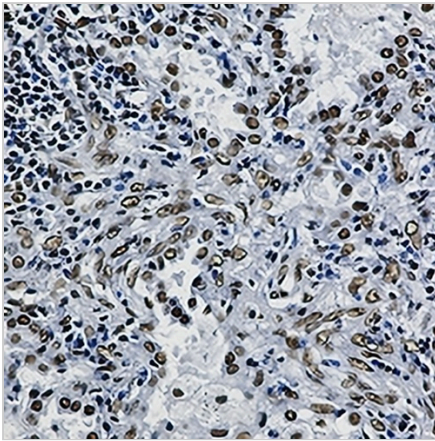
ILF3 Rabbit Monoclonal Antibody(C3164)

CAT. NO. AMA02776

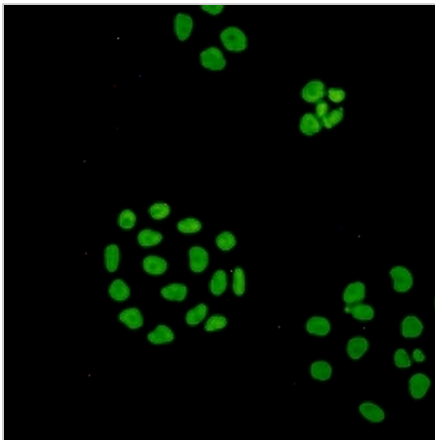
DATA



Western blot analysis of ILF3 expression in Jurkat (A), C6 (B), HeLa (C) whole cell lysates. (Predicted band size: 95 kD; Observed band size: 95 kD)



Immunohistochemical analysis of ILF3 staining in human lung cancer formalin fixed paraffin embedded tissue section. The section was pre-treated using heat mediated antigen retrieval with sodium citrate buffer (pH 6.0). The section was then incubated with the antibody at room temperature and detected using an HRP conjugated compact polymer system. DAB was used as the chromogen. The section was then counterstained with haematoxylin and mounted with DPX.



Immunofluorescent analysis of ILF3 staining in HeLa cells. Formalin-fixed cells were permeabilized with 0.1% Triton X-100 in TBS for 5-10 minutes and blocked with 3% BSA-PBS for 30 minutes at room temperature. Cells were probed with the primary antibody in 3% BSA-PBS and incubated overnight at 4 °C in a humidified chamber. Cells were washed with PBST and incubated with a AREX® Fluor 488 -conjugated secondary antibody (green) in PBS at room temperature in the dark.

STORAGE

Store at 4°C short term. For long term storage, store at -20°C, avoiding freeze/thaw cycles.

NOTE

For Research Use Only. Not for diagnostic, therapeutics, prophylactic or in vivo use.