

DATASHEET

PAI1 Rabbit Monoclonal Antibody(C3180)

CAT. NO. AMA02792

KEY FEATURES

Target	PAI1	Source / Host	Rabbit
Reactivity	Human, Mouse	Clonality	Monoclonal
Applications	WB	Conjugation	Unconjugated
Form / Buffer	Liquid in 50mM Tris-Glycine (pH 7.4), 0.15M NaCl, 50% Glycerol, 0.01% Sodium azide and 0.05% BSA.	Storage	at-20°C

BACKGROUND

Serine protease inhibitor. Inhibits TMPRSS7 . Is a primary inhibitor of tissue-type plasminogen activator (PLAT) and urokinase-type plasminogen activator (PLAU). As PLAT inhibitor, it is required for fibrinolysis down-regulation and is responsible for the controlled degradation of blood clots . As PLAU inhibitor, it is involved in the regulation of cell adhesion and spreading . Acts as a regulator of cell migration, independently of its role as protease inhibitor . It is required for stimulation of keratinocyte migration during cutaneous injury repair . It is involved in cellular and replicative senescence . Plays a role in alveolar type 2 cells senescence in the lung .

APPLICATION

To ensure optimal assay performance, AREX recommends conducting reagent titration tailored to each testing system for optimal detection results.

WB	1:500 - 1:1000
----	----------------

*Results are sample-specific. Please refer to your local assay conditions and test parameters for reference.

PRODUCT OVERVIEW

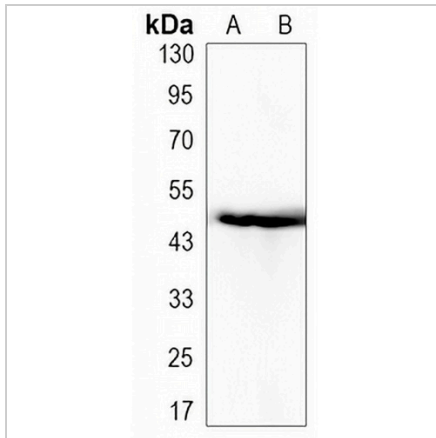
Description	Rabbit monoclonal antibody to PAI1
Specificity	Recognizes endogenous levels of PAI1 protein.
Antibody Type	Primary antibody
Immunogen	Recombinant protein of PAI1
Purification	The antibody was purified by immunogen affinity chromatography.
Molecular Weight	Predicted: 45 kD; Observed: 45 kD
Form/Buffer	Liquid in 50mM Tris-Glycine (pH 7.4), 0.15M NaCl, 50% Glycerol, 0.01% Sodium azide and 0.05% BSA.
Alternative Names	PAI1; PLANH1; Plasminogen activator inhibitor 1; PAI; PAI-1; Endothelial plasminogen activator inhibitor; Serpin E1
Gene Symbol	SERPINE1
Entrez Gene	5054(Human)
SwissProt	P05121(Human); P22777(Mouse)

*AREX continuously optimizes our products. Webpage content may not reflect the latest updates. For inquiries, please contact info@arexbio.com or your local distributor.

*Clone Number, Reactivity, Source/Host and Clonality can be found in the product name and Key Features section above.

DATASHEET**PAI1 Rabbit Monoclonal Antibody(C3180)**

CAT. NO. AMA02792

DATA

Western blot analysis of PAI1 expression in NIH3T3 (A), HeLa (B) whole cell lysates.
(Predicted band size: 45 kD; Observed band size: 45 kD)

STORAGE

Store at 4°C short term. For long term storage, store at -20°C, avoiding freeze/thaw cycles.

NOTE

For Research Use Only. Not for diagnostic, therapeutics, prophylactic or in vivo use.