

DATASHEET

Synaptophysin Rabbit Monoclonal Antibody(C3195)

CAT. NO. AMA02807

KEY FEATURES

| | | | |
|---------------|---|---------------|--------------|
| Target | Synaptophysin | Source / Host | Rabbit |
| Reactivity | Human, Rat | Clonality | Monoclonal |
| Applications | WB, IHC, IF/ICC | Conjugation | Unconjugated |
| Form / Buffer | Liquid in 50mM Tris-Glycine (pH 7.4), 0.15M NaCl, 50% Glycerol, 0.01% Sodium azide and 0.05% BSA. | Storage | at-20°C |

BACKGROUND

Possibly involved in structural functions as organizing other membrane components or in targeting the vesicles to the plasma membrane. Involved in the regulation of short-term and long-term synaptic plasticity .

APPLICATION

To ensure optimal assay performance, AREX recommends conducting reagent titration tailored to each testing system for optimal detection results.

| | |
|--------|----------------|
| WB | 1:500 - 1:1000 |
| IHC | 1:50 - 1:100 |
| IF/ICC | 1:50 - 1:100 |

*Results are sample-specific. Please refer to your local assay conditions and test parameters for reference.

PRODUCT OVERVIEW

| | |
|-------------------|---|
| Description | Rabbit monoclonal antibody to Synaptophysin |
| Specificity | Recognizes endogenous levels of Synaptophysin protein. |
| Antibody Type | Primary antibody |
| Immunogen | A synthetic peptide of human Synaptophysin |
| Purification | The antibody was purified by immunogen affinity chromatography. |
| Molecular Weight | Predicted: 34 kD; Observed: 38 kD |
| Form/Buffer | Liquid in 50mM Tris-Glycine (pH 7.4), 0.15M NaCl, 50% Glycerol, 0.01% Sodium azide and 0.05% BSA. |
| Alternative Names | Synaptophysin; Major synaptic vesicle protein p38 |
| Gene Symbol | SYP |
| Entrez Gene | 6855(Human); 24804(Rat) |
| SwissProt | P08247(Human); P07825(Rat) |

*AREX continuously optimizes our products. Webpage content may not reflect the latest updates. For inquiries, please contact info@arexbio.com or your local distributor.

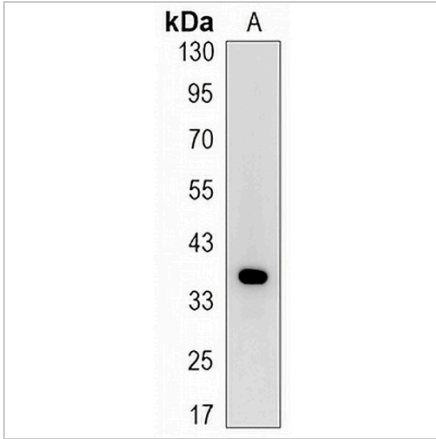
*Clone Number, Reactivity, Source/Host and Clonality can be found in the product name and Key Features section above.

DATASHEET

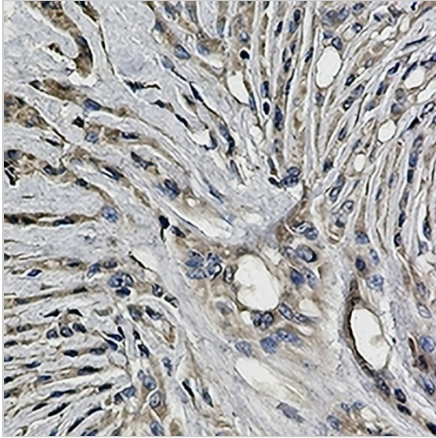
Synaptophysin Rabbit Monoclonal Antibody(C3195)

CAT. NO. AMA02807

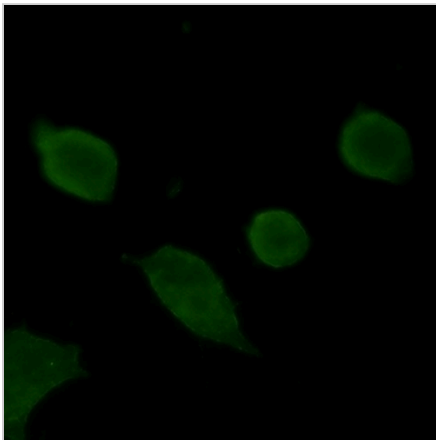
DATA



Western blot analysis of Synaptophysin expression in rat brain (A) whole cell lysates. (Predicted band size: 34 kD; Observed band size: 38 kD)



Immunohistochemical analysis of Synaptophysin staining in human brain formalin fixed paraffin embedded tissue section. The section was pre-treated using heat mediated antigen retrieval with sodium citrate buffer (pH 6.0). The section was then incubated with the antibody at room temperature and detected using an HRP conjugated compact polymer system. DAB was used as the chromogen. The section was then counterstained with haematoxylin and mounted with DPX.



Immunofluorescent analysis of Synaptophysin staining in NIH3T3 cells. Formalin-fixed cells were permeabilized with 0.1% Triton X-100 in TBS for 5-10 minutes and blocked with 3% BSA-PBS for 30 minutes at room temperature. Cells were probed with the primary antibody in 3% BSA-PBS and incubated overnight at 4 °C in a humidified chamber. Cells were washed with PBST and incubated with a AREX® Fluor 488 -conjugated secondary antibody (green) in PBS at room temperature in the dark.

STORAGE

Store at 4°C short term. For long term storage, store at -20°C, avoiding freeze/thaw cycles.

NOTE

For Research Use Only. Not for diagnostic, therapeutics, prophylactic or in vivo use.