

DATASHEET

TMEM192 Rabbit Monoclonal Antibody(C3198)

CAT. NO. AMA02810

KEY FEATURES

Target	TMEM192	Source / Host	Rabbit
Reactivity	Human	Clonality	Monoclonal
Applications	WB	Conjugation	Unconjugated
Form / Buffer	Liquid in 50mM Tris-Glycine (pH 7.4), 0.15M NaCl, 50% Glycerol, 0.01% Sodium azide and 0.05% BSA.	Storage	at-20°C

BACKGROUND

Transmembrane protein 192 (TMEM192). Belongs to the TMEM192 family Subunit: Homodimer Subcellular location: Lysosome membrane; Late endosome Tissue specificity: Strongly expressed in kidney, liver, lung and pancreas PTM: Not N-glycosylated

APPLICATION

To ensure optimal assay performance, AREX recommends conducting reagent titration tailored to each testing system for optimal detection results.

WB	1:500 - 1:1000
----	----------------

*Results are sample-specific. Please refer to your local assay conditions and test parameters for reference.

PRODUCT OVERVIEW

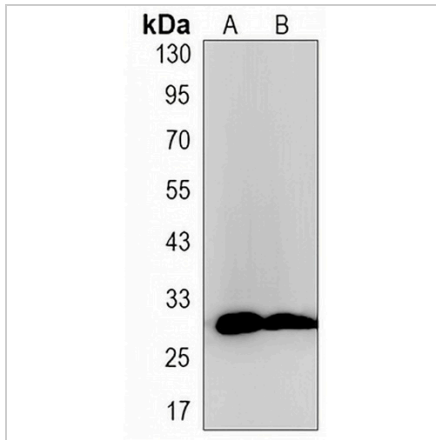
Description	Rabbit monoclonal antibody to TMEM192
Specificity	Recognizes endogenous levels of TMEM192 protein.
Antibody Type	Primary antibody
Immunogen	Recombinant protein of human TMEM192
Purification	The antibody was purified by immunogen affinity chromatography.
Molecular Weight	Predicted: 31 kD; Observed: 31 kD
Form/Buffer	Liquid in 50mM Tris-Glycine (pH 7.4), 0.15M NaCl, 50% Glycerol, 0.01% Sodium azide and 0.05% BSA.
Alternative Names	Transmembrane protein 192
Gene Symbol	TMEM192
Entrez Gene	201931(Human)
SwissProt	Q8IY95(Human)

*AREX continuously optimizes our products. Webpage content may not reflect the latest updates. For inquiries, please contact info@arexbio.com or your local distributor.

*Clone Number, Reactivity, Source/Host and Clonality can be found in the product name and Key Features section above.

DATASHEET**TMEM192 Rabbit Monoclonal Antibody(C3198)**

CAT. NO. AMA02810

DATA

Western blot analysis of TMEM192 expression in K562 (A), HeLa (B) whole cell lysates. (Predicted band size: 31 kD; Observed band size: 31 kD)

STORAGE

Store at 4°C short term. For long term storage, store at -20°C, avoiding freeze/thaw cycles.

NOTE

For Research Use Only. Not for diagnostic, therapeutics, prophylactic or in vivo use.