

## DATASHEET

# Vinculin Rabbit Monoclonal Antibody(C3209)

CAT. NO. AMA02821

### KEY FEATURES

Target	Vinculin	Source / Host	Rabbit
Reactivity	Human, Mouse, Rat	Clonality	Monoclonal
Applications	WB, IHC	Conjugation	Unconjugated
Form / Buffer	Liquid in 50mM Tris-Glycine (pH 7.4), 0.15M NaCl, 50% Glycerol, 0.01% Sodium azide and 0.05% BSA.	Storage	at-20°C

### BACKGROUND

Actin filament (F-actin)-binding protein involved in cell-matrix adhesion and cell-cell adhesion. Regulates cell-surface E-cadherin expression and potentiates mechanosensing by the E-cadherin complex. May also play important roles in cell morphology and locomotion.

### APPLICATION

To ensure optimal assay performance, AREX recommends conducting reagent titration tailored to each testing system for optimal detection results.

WB	1:500 - 1:1000
IHC	1:50 - 1:100

\*Results are sample-specific. Please refer to your local assay conditions and test parameters for reference.

### PRODUCT OVERVIEW

Description	Rabbit monoclonal antibody to Vinculin
Specificity	Recognizes endogenous levels of Vinculin protein.
Antibody Type	Primary antibody
Immunogen	Recombinant protein of human Vinculin
Purification	The antibody was purified by immunogen affinity chromatography.
Molecular Weight	Predicted: 124 kD; Observed: 124 kD
Form/Buffer	Liquid in 50mM Tris-Glycine (pH 7.4), 0.15M NaCl, 50% Glycerol, 0.01% Sodium azide and 0.05% BSA.
Alternative Names	Vinculin; Metavinculin; MV
Gene Symbol	VCL
Entrez Gene	7414(Human); 22330(Mouse); 305679(Rat)
SwissProt	P18206(Human); Q64727(Mouse); P85972(Rat)

\*AREX continuously optimizes our products. Webpage content may not reflect the latest updates. For inquiries, please contact [info@arexbio.com](mailto:info@arexbio.com) or your local distributor.

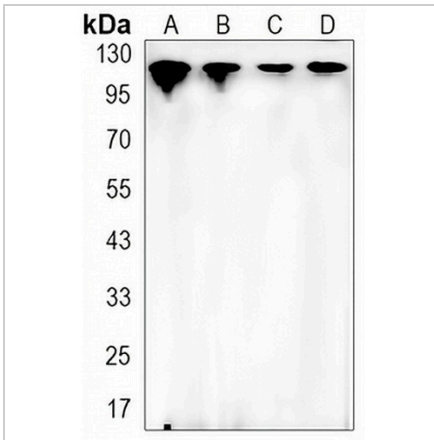
\*Clone Number, Reactivity, Source/Host and Clonality can be found in the product name and Key Features section above.

**DATASHEET**

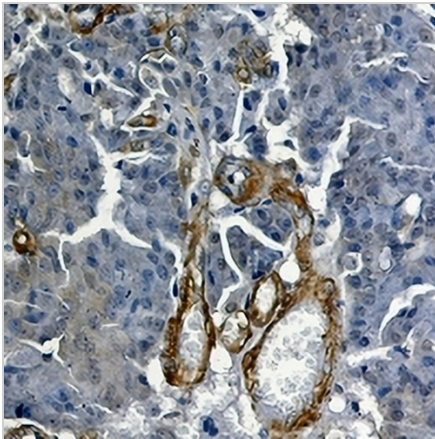
**Vinculin Rabbit Monoclonal Antibody(C3209)**

CAT. NO. AMA02821

**DATA**



Western blot analysis of Vinculin expression in K562 (A), C6 (B), NIH3T3 (C), HeLa (D) whole cell lysates. (Predicted band size: 124 kD; Observed band size: 124 kD)



Immunohistochemical analysis of Vinculin staining in human breast carcinoma formalin fixed paraffin embedded tissue section. The section was pre-treated using heat mediated antigen retrieval with sodium citrate buffer (pH 6.0). The section was then incubated with the antibody at room temperature and detected using an HRP conjugated compact polymer system. DAB was used as the chromogen. The section was then counterstained with haematoxylin and mounted with DPX.

**STORAGE**

Store at 4°C short term. For long term storage, store at -20°C, avoiding freeze/thaw cycles.

**NOTE**

For Research Use Only. Not for diagnostic, therapeutics, prophylactic or in vivo use.