

DATASHEET

WDR1 Rabbit Monoclonal Antibody(C3210)

CAT. NO. AMA02822

KEY FEATURES

Target	WDR1	Source / Host	Rabbit
Reactivity	Human	Clonality	Monoclonal
Applications	WB, IHC, IF/ICC	Conjugation	Unconjugated
Form / Buffer	Liquid in 50mM Tris-Glycine (pH 7.4), 0.15M NaCl, 50% Glycerol, 0.01% Sodium azide and 0.05% BSA.	Storage	at-20°C

BACKGROUND

Induces disassembly of actin filaments in conjunction with ADF/cofilin family proteins . Enhances cofilin-mediated actin severing . Involved in cytokinesis. Involved in chemotactic cell migration by restricting lamellipodial membrane protrusions . Involved in myocardium sarcomere organization. Required for cardiomyocyte growth and maintenance . Involved in megakaryocyte maturation and platelet shedding. Required for the establishment of planar cell polarity (PCP) during follicular epithelium development and for cell shape changes during PCP; the function seems to implicate cooperation with CFL1 and/or DSTN/ADF. Involved in the generation/maintenance of cortical tension .

APPLICATION

To ensure optimal assay performance, AREX recommends conducting reagent titration tailored to each testing system for optimal detection results.

WB	1:500 - 1:1000
IHC	1:50 - 1:100
IF/ICC	1:50 - 1:100

*Results are sample-specific. Please refer to your local assay conditions and test parameters for reference.

PRODUCT OVERVIEW

Description	Rabbit monoclonal antibody to WDR1
Specificity	Recognizes endogenous levels of WDR1 protein.
Antibody Type	Primary antibody
Immunogen	A synthetic peptide of human WDR1
Purification	The antibody was purified by immunogen affinity chromatography.
Molecular Weight	Predicted: 66 kD; Observed: 66 kD
Form/Buffer	Liquid in 50mM Tris-Glycine (pH 7.4), 0.15M NaCl, 50% Glycerol, 0.01% Sodium azide and 0.05% BSA.
Alternative Names	WD repeat-containing protein 1; Actin-interacting protein 1; AIP1; NORI-1
Gene Symbol	WDR1
Entrez Gene	9948(Human)
SwissProt	O75083(Human)

*AREX continuously optimizes our products. Webpage content may not reflect the latest updates. For inquiries, please contact info@arexbio.com or your local distributor.

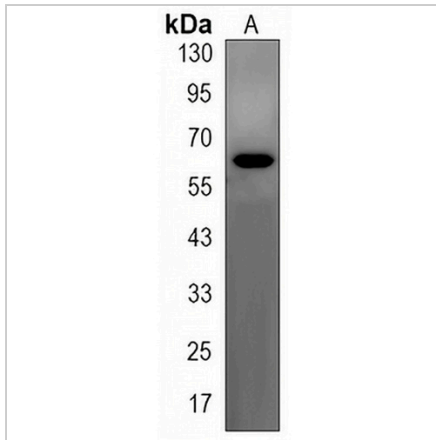
*Clone Number, Reactivity, Source/Host and Clonality can be found in the product name and Key Features section above.

DATASHEET

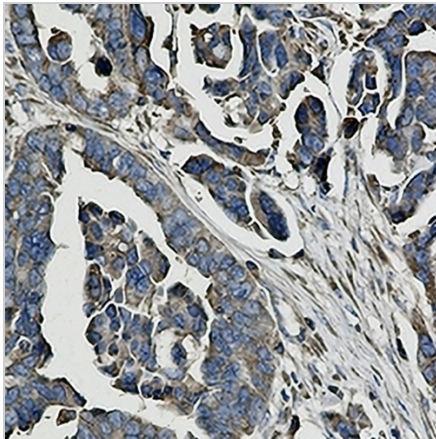
WDR1 Rabbit Monoclonal Antibody(C3210)

CAT. NO. AMA02822

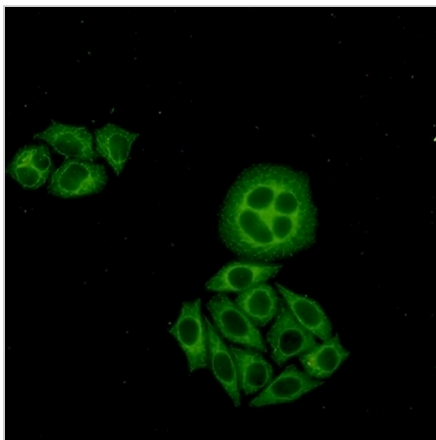
DATA



Western blot analysis of WDR1 expression in Jurkat (A) whole cell lysates. (Predicted band size: 66 kD; Observed band size: 66 kD)



Immunohistochemical analysis of WDR1 staining in human cholangiocarcinoma formalin fixed paraffin embedded tissue section. The section was pre-treated using heat mediated antigen retrieval with sodium citrate buffer (pH 6.0). The section was then incubated with the antibody at room temperature and detected using an HRP conjugated compact polymer system. DAB was used as the chromogen. The section was then counterstained with haematoxylin and mounted with DPX.



Immunofluorescent analysis of WDR1 staining in HeLa cells. Formalin-fixed cells were permeabilized with 0.1% Triton X-100 in TBS for 5-10 minutes and blocked with 3% BSA-PBS for 30 minutes at room temperature. Cells were probed with the primary antibody in 3% BSA-PBS and incubated overnight at 4 °C in a humidified chamber. Cells were washed with PBST and incubated with a AREX® Fluor 488 -conjugated secondary antibody (green) in PBS at room temperature in the dark.

STORAGE

Store at 4°C short term. For long term storage, store at -20°C, avoiding freeze/thaw cycles.

NOTE

For Research Use Only. Not for diagnostic, therapeutics, prophylactic or in vivo use.