

## DATASHEET

# CD142 Rabbit Monoclonal Antibody(C3215)

CAT. NO. AMA02827

### KEY FEATURES

Target	CD142	Source / Host	Rabbit
Reactivity	Human, Mouse, Rat	Clonality	Monoclonal
Applications	WB, IHC	Conjugation	Unconjugated
Form / Buffer	Liquid in 50mM Tris-Glycine (pH 7.4), 0.15M NaCl, 50% Glycerol, 0.01% Sodium azide and 0.05% BSA.	Storage	at-20°C

### BACKGROUND

Initiates blood coagulation by forming a complex with circulating factor VII or VIIa. The [TF:VIIa] complex activates factors IX or X by specific limited proteolysis. TF plays a role in normal hemostasis by initiating the cell-surface assembly and propagation of the coagulation protease cascade.

### APPLICATION

To ensure optimal assay performance, AREX recommends conducting reagent titration tailored to each testing system for optimal detection results.

WB	1:500 - 1:1000
IHC	1:50 - 1:100

\*Results are sample-specific. Please refer to your local assay conditions and test parameters for reference.

### PRODUCT OVERVIEW

Description	Rabbit monoclonal antibody to CD142
Specificity	Recognizes endogenous levels of CD142 protein.
Antibody Type	Primary antibody
Immunogen	A synthetic peptide of human Tissue Factor
Purification	The antibody was purified by immunogen affinity chromatography.
Molecular Weight	Predicted: 33 kD; Observed: 45 kD
Form/Buffer	Liquid in 50mM Tris-Glycine (pH 7.4), 0.15M NaCl, 50% Glycerol, 0.01% Sodium azide and 0.05% BSA.
Alternative Names	Tissue factor; TF; Coagulation factor III; Thromboplastin; CD142
Gene Symbol	F3
Entrez Gene	2152(Human); 14066(Mouse)
SwissProt	P13726(Human); P20352(Mouse); P42533(Rat)

\*AREX continuously optimizes our products. Webpage content may not reflect the latest updates. For inquiries, please contact [info@arexbio.com](mailto:info@arexbio.com) or your local distributor.

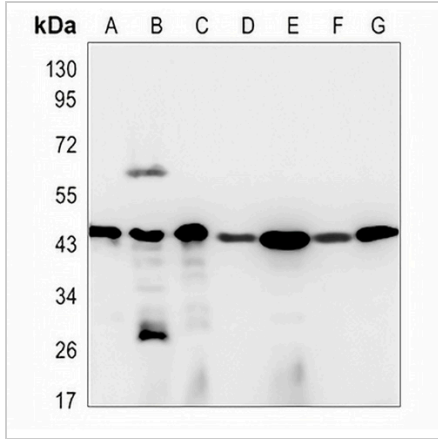
\*Clone Number, Reactivity, Source/Host and Clonality can be found in the product name and Key Features section above.

**DATASHEET**

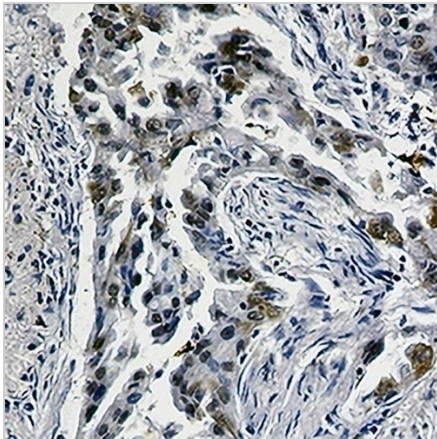
**CD142 Rabbit Monoclonal Antibody(C3215)**

CAT. NO. AMA02827

**DATA**



Western blot analysis of CD142 expression in Hela (A), A549 (B), MCF7 (C), U251 (D), HL60 (E), mouse brain (F), rat brain (G) whole cell lysates. (Predicted band size: 33 kD; Observed band size: 45 kD)



Immunohistochemical analysis of CD142 staining in human lung cancer formalin fixed paraffin embedded tissue section. The section was pre-treated using heat mediated antigen retrieval with sodium citrate buffer (pH 6.0). The section was then incubated with the antibody at room temperature and detected using an HRP conjugated compact polymer system. DAB was used as the chromogen. The section was then counterstained with haematoxylin and mounted with DPX.

**STORAGE**

Store at 4°C short term. For long term storage, store at -20°C, avoiding freeze/thaw cycles.

**NOTE**

For Research Use Only. Not for diagnostic, therapeutics, prophylactic or in vivo use.