

**DATASHEET**
**KIM1 Rabbit Monoclonal Antibody(C3216)**
**CAT. NO. AMA02828**
**KEY FEATURES**

|               |   |               |              |
|---------------|---|---------------|--------------|
| Target        | KIM1  | Source / Host | Rabbit       |
| Reactivity    | Human, Mouse, Rat   | Clonality     | Monoclonal   |
| Applications  | WB  | Conjugation   | Unconjugated |
| Form / Buffer | Liquid in 50mM Tris-Glycine (pH 7.4),<br>0.15M NaCl, 50% Glycerol, 0.01%<br>Sodium azide and 0.05% BSA. | Storage       | at-20°C      |

**BACKGROUND**

Phosphatidylserine receptor that plays an important functional role in regulatory B-cell homeostasis including generation, expansion and suppressor functions . As P-selectin/SELPLG ligand, plays a specialized role in activated but not naive T-cell trafficking during inflammatory responses . Controls thereby T-cell accumulation in the inflamed central nervous system (CNS) and the induction of autoimmune disease . Also regulates expression of various anti-inflammatory cytokines and co-inhibitory ligands including IL10 . Acts as a regulator of T-cell proliferation . Confers phagocytic ability on injured kidney epithelial cells, allowing them to bind to and internalize apoptotic bodies and necrotic debris following kidney injury .

**APPLICATION**

To ensure optimal assay performance, AREX recommends conducting reagent titration tailored to each testing system for optimal detection results.

|    |                |
|----|----------------|
| WB | 1:500 - 1:1000 |
|----|----------------|

\*Results are sample-specific. Please refer to your local assay conditions and test parameters for reference.

**PRODUCT OVERVIEW**

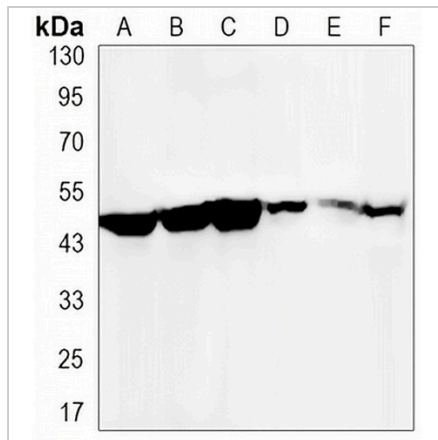
|                   |  |
|-------------------|--|
| Description       | Rabbit monoclonal antibody to KIM1   |
| Specificity       | Recognizes endogenous levels of KIM1 protein.  |
| Antibody Type     | Primary antibody   |
| Immunogen         | A synthetic peptide of human TIM 1   |
| Purification      | The antibody was purified by immunogen affinity chromatography.  |
| Molecular Weight  | Predicted: 39 kD; Observed: 50 kD  |
| Form/Buffer       | Liquid in 50mM Tris-Glycine (pH 7.4), 0.15M NaCl, 50% Glycerol, 0.01% Sodium azide and 0.05% BSA.  |
| Alternative Names | KIM1; TIM1; TIMD1; Hepatitis A virus cellular receptor 1; HAVcr-1; Kidney injury molecule 1; KIM-1; T-cell immunoglobulin and mucin domain-containing protein 1; TIMD-1; T-cell immunoglobulin mucin receptor 1; TIM; TIM-1; T-cell membrane protein 1 |
| Gene Symbol       | HAVCR1   |
| Entrez Gene       | 26762(Human); 171283(Mouse); 286934(Rat)   |
| SwissProt         | Q96D42(Human); Q5QNS5(Mouse); O54947(Rat)  |

\*AREX continuously optimizes our products. Webpage content may not reflect the latest updates. For inquiries, please contact [info@arexbio.com](mailto:info@arexbio.com) or your local distributor.

\*Clone Number, Reactivity, Source/Host and Clonality can be found in the product name and Key Features section above.

**DATASHEET****KIM1 Rabbit Monoclonal Antibody(C3216)**

CAT. NO. AMA02828

**DATA**

Western blot analysis of KIM1 expression in A549 (A), MCF7 (B), U251 (C), HL60 (D), Raw264.7 (E), PC12 (F) whole cell lysates. (Predicted band size: 39 kD; Observed band size: 50 kD)

**STORAGE**

Store at 4°C short term. For long term storage, store at -20°C, avoiding freeze/thaw cycles.

**NOTE**

For Research Use Only. Not for diagnostic, therapeutics, prophylactic or in vivo use.