

DATASHEET

CLSTN1 Rabbit Monoclonal Antibody(C3232)

CAT. NO. AMA02844

KEY FEATURES

Target	CLSTN1	Source / Host	Rabbit
Reactivity	Human, Mouse, Hamster	Clonality	Monoclonal
Applications	WB, IHC, IF/ICC	Conjugation	Unconjugated
Form / Buffer	Liquid in 50mM Tris-Glycine (pH 7.4), 0.15M NaCl, 50% Glycerol, 0.01% Sodium azide and 0.05% BSA.	Storage	at-20°C

BACKGROUND

Postsynaptic adhesion molecule that binds to presynaptic neuexins to mediate both excitatory and inhibitory synapse formation . Promotes synapse development by acting as a cell adhesion molecule at the postsynaptic membrane, which associates with neuexin-alpha at the presynaptic membrane . Also functions as a cargo in axonal anterograde transport by acting as a molecular adapter that promotes KLC1 association with vesicles . Complex formation with APBA2 and APP, stabilizes APP metabolism and enhances APBA2-mediated suppression of beta-APP40 secretion, due to the retardation of intracellular APP maturation .

APPLICATION

To ensure optimal assay performance, AREX recommends conducting reagent titration tailored to each testing system for optimal detection results.

WB	1:500 - 1:1000
IHC	1:50 - 1:100
IF/ICC	1:50 - 1:100

*Results are sample-specific. Please refer to your local assay conditions and test parameters for reference.

PRODUCT OVERVIEW

Description	Rabbit monoclonal antibody to CLSTN1
Specificity	Recognizes endogenous levels of CLSTN1 protein.
Antibody Type	Primary antibody
Immunogen	A synthetic peptide of human CLSTN1
Purification	The antibody was purified by immunogen affinity chromatography.
Molecular Weight	Predicted: 110 kD; Observed: 115 kD
Form/Buffer	Liquid in 50mM Tris-Glycine (pH 7.4), 0.15M NaCl, 50% Glycerol, 0.01% Sodium azide and 0.05% BSA.
Alternative Names	CS1; KIAA0911; Calsyntenin-1; Alcadin-alpha; Alc-alpha; Alzheimer-related cadherin-like protein; Non-classical cadherin XB31alpha
Gene Symbol	CLSTN1
Entrez Gene	22883(Human); 65945(Mouse)
SwissProt	O94985(Human); Q9EPL2(Mouse)

*AREX continuously optimizes our products. Webpage content may not reflect the latest updates. For inquiries, please contact info@arexbio.com or your local distributor.

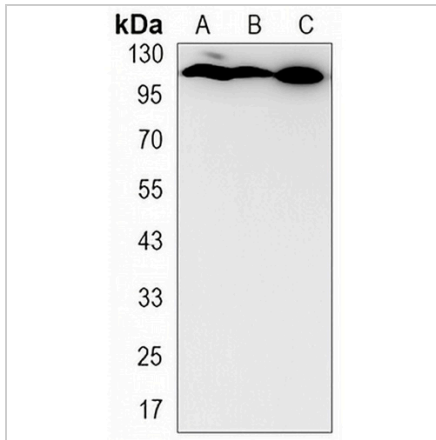
*Clone Number, Reactivity, Source/Host and Clonality can be found in the product name and Key Features section above.

DATASHEET

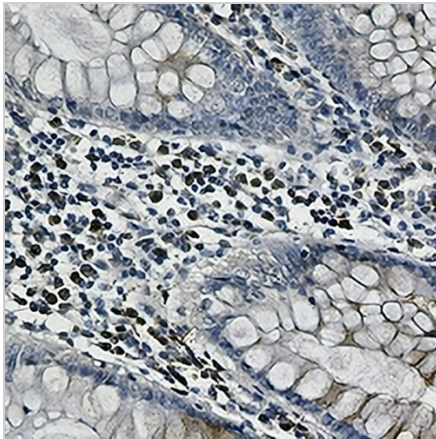
CLSTN1 Rabbit Monoclonal Antibody(C3232)

CAT. NO. AMA02844

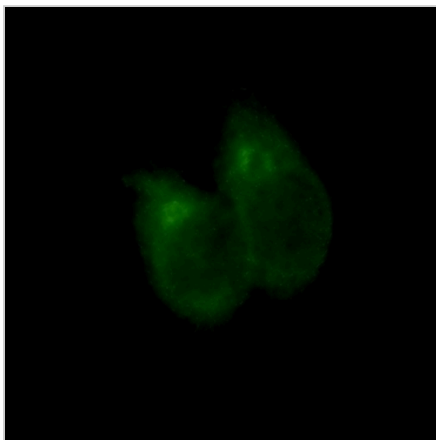
DATA



Western blot analysis of CLSTN1 expression in mouse brain (A), HeLa (B), CHOK1 (C) whole cell lysates. (Predicted band size: 110 kD; Observed band size: 115 kD)



Immunohistochemical analysis of CLSTN1 staining in human colon cancer formalin fixed paraffin embedded tissue section. The section was pre-treated using heat mediated antigen retrieval with sodium citrate buffer (pH 6.0). The section was then incubated with the antibody at room temperature and detected using an HRP conjugated compact polymer system. DAB was used as the chromogen. The section was then counterstained with haematoxylin and mounted with DPX.



Immunofluorescent analysis of CLSTN1 staining in HeLa cells. Formalin-fixed cells were permeabilized with 0.1% Triton X-100 in TBS for 5-10 minutes and blocked with 3% BSA-PBS for 30 minutes at room temperature. Cells were probed with the primary antibody in 3% BSA-PBS and incubated overnight at 4 °C in a hidified chamber. Cells were washed with PBST and incubated with a AREX® Fluor 488 -conjugated secondary antibody (green) in PBS at room temperature in the dark.

STORAGE

Store at 4°C short term. For long term storage, store at -20°C, avoiding freeze/thaw cycles.

NOTE

For Research Use Only. Not for diagnostic, therapeutics, prophylactic or in vivo use.