

**DATASHEET**

**Collagen 1 alpha 1 Rabbit Monoclonal Antibody(C3234)**

CAT. NO. AMA02846

**KEY FEATURES**

Target	Collagen 1 alpha 1	Source / Host	Rabbit
Reactivity	Human	Clonality	Monoclonal
Applications	WB, IF/ICC, IP	Conjugation	Unconjugated
Form / Buffer	Liquid in 50mM Tris-Glycine (pH 7.4), 0.15M NaCl, 50% Glycerol, 0.01% Sodium azide and 0.05% BSA.	Storage	at-20°C

**BACKGROUND**

Type I collagen is a member of group I collagen (fibrillar forming collagen).

**APPLICATION**

To ensure optimal assay performance, AREX recommends conducting reagent titration tailored to each testing system for optimal detection results.

WB	1:500 - 1:1000
IF/ICC	1:50 - 1:100
IP	1:10 - 1:50

\*Results are sample-specific. Please refer to your local assay conditions and test parameters for reference.

**PRODUCT OVERVIEW**

Description	Rabbit monoclonal antibody to Collagen 1 alpha 1
Specificity	Recognizes endogenous levels of Collagen 1 alpha 1 protein.
Antibody Type	Primary antibody
Immunogen	Recombinant protein of human Collagen I
Purification	The antibody was purified by immunogen affinity chromatography.
Molecular Weight	Predicted: 139 kD; Observed: 139 kD
Form/Buffer	Liquid in 50mM Tris-Glycine (pH 7.4), 0.15M NaCl, 50% Glycerol, 0.01% Sodium azide and 0.05% BSA.
Alternative Names	Collagen alpha-1(I) chain; Alpha-1 type I collagen
Gene Symbol	COL1A1
Entrez Gene	1277(Human)
SwissProt	P02452(Human)

\*AREX continuously optimizes our products. Webpage content may not reflect the latest updates. For inquiries, please contact [info@arexbio.com](mailto:info@arexbio.com) or your local distributor.

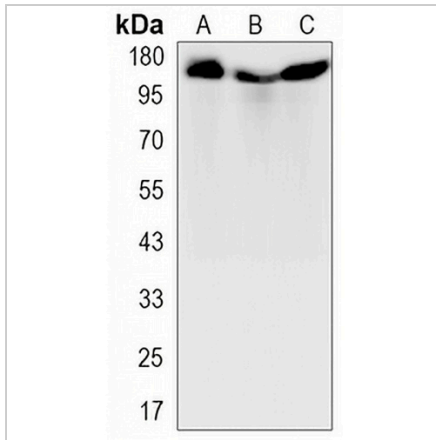
\*Clone Number, Reactivity, Source/Host and Clonality can be found in the product name and Key Features section above.

**DATASHEET**

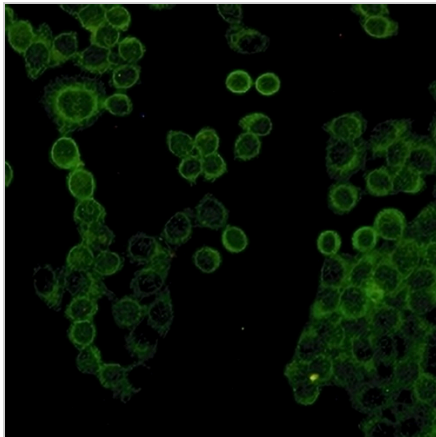
**Collagen 1 alpha 1 Rabbit Monoclonal Antibody(C3234)**

CAT. NO. AMA02846

**DATA**



Western blot analysis of Collagen 1 alpha 1 expression in A549 (A), HL60 (B), U2OS (C) whole cell lysates. (Predicted band size: 139 kD; Observed band size: 139 kD)



Immunofluorescent analysis of Collagen 1 alpha 1 staining in HeLa cells. Formalin-fixed cells were permeabilized with 0.1% Triton X-100 in TBS for 5-10 minutes and blocked with 3% BSA-PBS for 30 minutes at room temperature. Cells were probed with the primary antibody in 3% BSA-PBS and incubated overnight at 4 °C in a humidified chamber. Cells were washed with PBST and incubated with a AREX® Fluor 488 -conjugated secondary antibody (green) in PBS at room temperature in the dark.

**STORAGE**

Store at 4°C short term. For long term storage, store at -20°C, avoiding freeze/thaw cycles.

**NOTE**

For Research Use Only. Not for diagnostic, therapeutics, prophylactic or in vivo use.