

DATASHEET

EG5 Rabbit Monoclonal Antibody(C3240)

CAT. NO. AMA02852

KEY FEATURES

Target	EG5	Source / Host	Rabbit
Reactivity	Human, Mouse, Rat	Clonality	Monoclonal
Applications	WB, IF/ICC	Conjugation	Unconjugated
Form / Buffer	Liquid in 50mM Tris-Glycine (pH 7.4), 0.15M NaCl, 50% Glycerol, 0.01% Sodium azide and 0.05% BSA.	Storage	at-20°C

BACKGROUND

Motor protein required for establishing a bipolar spindle and thus contributing to chromosome congression during mitosis . Required in non-mitotic cells for transport of secretory proteins from the Golgi complex to the cell surface .

APPLICATION

To ensure optimal assay performance, AREX recommends conducting reagent titration tailored to each testing system for optimal detection results.

WB	1:500 - 1:1000
IF/ICC	1:50 - 1:100

*Results are sample-specific. Please refer to your local assay conditions and test parameters for reference.

PRODUCT OVERVIEW

Description	Rabbit monoclonal antibody to EG5
Specificity	Recognizes endogenous levels of EG5 protein.
Antibody Type	Primary antibody
Immunogen	Recombinant protein of human Eg5
Purification	The antibody was purified by immunogen affinity chromatography.
Molecular Weight	Predicted: 119 kD; Observed: 119 kD
Form/Buffer	Liquid in 50mM Tris-Glycine (pH 7.4), 0.15M NaCl, 50% Glycerol, 0.01% Sodium azide and 0.05% BSA.
Alternative Names	EG5; KNSL1; TRIP5; Kinesin-like protein KIF11; Kinesin-like protein 1; Kinesin-like spindle protein HKSP; Kinesin-related motor protein Eg5; Thyroid receptor-interacting protein 5; TR-interacting protein 5; TRIP-5
Gene Symbol	KIF11
Entrez Gene	3832(Human); 16551(Mouse)
SwissProt	P52732(Human); Q6P9P6(Mouse)

*AREX continuously optimizes our products. Webpage content may not reflect the latest updates. For inquiries, please contact info@arexbio.com or your local distributor.

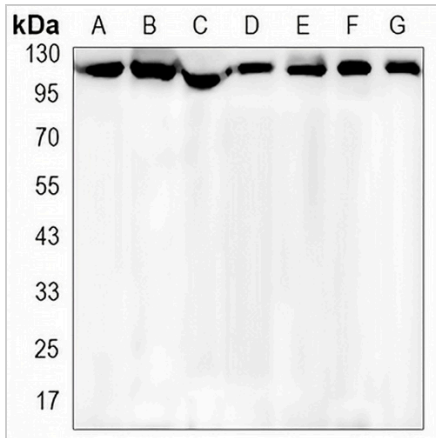
*Clone Number, Reactivity, Source/Host and Clonality can be found in the product name and Key Features section above.

DATASHEET

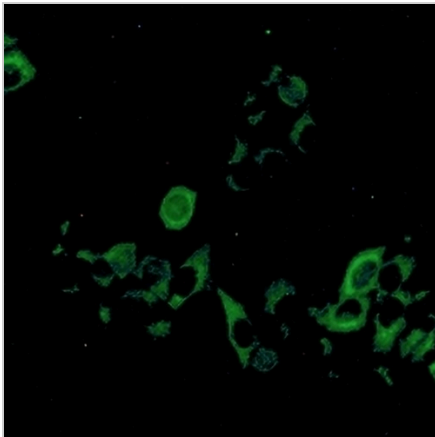
EG5 Rabbit Monoclonal Antibody(C3240)

CAT. NO. AMA02852

DATA



Western blot analysis of EG5 expression in NIH3T3 (A), MEF (B), HeLa (C), A549 (D), HL60 (E), U2OS (F), C6 (G) whole cell lysates. (Predicted band size: 119 kD; Observed band size: 119 kD)



Immunofluorescent analysis of EG5 staining in HeLa cells. Formalin-fixed cells were permeabilized with 0.1% Triton X-100 in TBS for 5-10 minutes and blocked with 3% BSA-PBS for 30 minutes at room temperature. Cells were probed with the primary antibody in 3% BSA-PBS and incubated overnight at 4 °C in a humidified chamber. Cells were washed with PBST and incubated with a AREX® Fluor 488 -conjugated secondary antibody (green) in PBS at room temperature in the dark.

STORAGE

Store at 4°C short term. For long term storage, store at -20°C, avoiding freeze/thaw cycles.

NOTE

For Research Use Only. Not for diagnostic, therapeutics, prophylactic or in vivo use.