

## DATASHEET

# HIF1 beta Rabbit Monoclonal Antibody(C3242)

CAT. NO. AMA02854

### KEY FEATURES

Target	HIF1 beta	Source / Host	Rabbit
Reactivity	Human, Mouse, Rat, Hamster	Clonality	Monoclonal
Applications	WB, IHC	Conjugation	Unconjugated
Form / Buffer	Liquid in 50mM Tris-Glycine (pH 7.4), 0.15M NaCl, 50% Glycerol, 0.01% Sodium azide and 0.05% BSA.	Storage	at-20°C

### BACKGROUND

Required for activity of the AHR. Upon ligand binding, AHR translocates into the nucleus, where it heterodimerizes with ARNT and induces transcription by binding to xenobiotic response elements (XRE). Not required for the ligand-binding subunit to translocate from the cytosol to the nucleus after ligand binding . Not required for the ligand-binding subunit to translocate from the cytosol to the nucleus after ligand binding . The complex initiates transcription of genes involved in the regulation of a variety of biological processes, including angiogenesis, hematopoiesis, drug and lipid metabolism, cell motility and immune modulation (Probable).

### APPLICATION

To ensure optimal assay performance, AREX recommends conducting reagent titration tailored to each testing system for optimal detection results.

WB	1:500 - 1:1000
IHC	1:50 - 1:100

\*Results are sample-specific. Please refer to your local assay conditions and test parameters for reference.

### PRODUCT OVERVIEW

Description	Rabbit monoclonal antibody to HIF1 beta
Specificity	Recognizes endogenous levels of HIF1 beta protein.
Antibody Type	Primary antibody
Immunogen	Recombinant protein of human HIF1 beta
Purification	The antibody was purified by immunogen affinity chromatography.
Molecular Weight	Predicted: 87 kD; Observed: 87 kD
Form/Buffer	Liquid in 50mM Tris-Glycine (pH 7.4), 0.15M NaCl, 50% Glycerol, 0.01% Sodium azide and 0.05% BSA.
Alternative Names	BHLHE2; Aryl hydrocarbon receptor nuclear translocator; ARNT protein; Class E basic helix-loop-helix protein 2; bHLHe2; Dioxin receptor nuclear translocator; Hypoxia-inducible factor 1-beta; HIF-1-beta; HIF1-beta
Gene Symbol	ARNT
Entrez Gene	405(Human); 11863(Mouse); 25242(Rat)
SwissProt	P27540(Human); P53762(Mouse); P41739(Rat)

\*AREX continuously optimizes our products. Webpage content may not reflect the latest updates. For inquiries, please contact [info@arexbio.com](mailto:info@arexbio.com) or your local distributor.

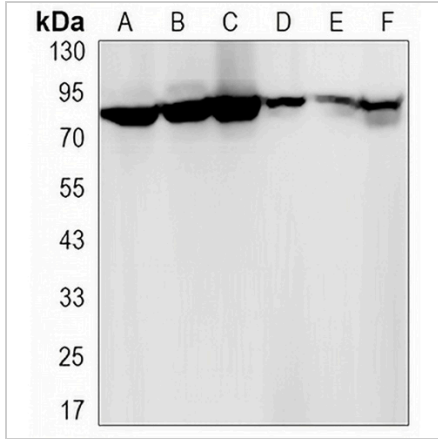
\*Clone Number, Reactivity, Source/Host and Clonality can be found in the product name and Key Features section above.

**DATASHEET**

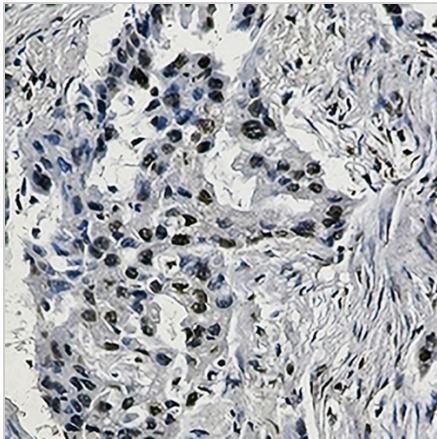
**HIF1 beta Rabbit Monoclonal Antibody(C3242)**

CAT. NO. AMA02854

**DATA**



Western blot analysis of HIF1 beta expression in Raw264.7 (A), NIH3T3 (B), HeLa (C), CHOK1 (D), C6 (E), Ramos (F) whole cell lysates. (Predicted band size: 87 kD; Observed band size: 87 kD)



Immunohistochemical analysis of HIF1 beta staining in human lung cancer formalin fixed paraffin embedded tissue section. The section was pre-treated using heat mediated antigen retrieval with sodium citrate buffer (pH 6.0). The section was then incubated with the antibody at room temperature and detected using an HRP conjugated compact polymer system. DAB was used as the chromogen. The section was then counterstained with haematoxylin and mounted with DPX.

**STORAGE**

Store at 4°C short term. For long term storage, store at -20°C, avoiding freeze/thaw cycles.

**NOTE**

For Research Use Only. Not for diagnostic, therapeutics, prophylactic or in vivo use.