

**DATASHEET**

**L1RE1 Rabbit Monoclonal Antibody(C3248)**

CAT. NO. AMA02860

**KEY FEATURES**

Target	L1RE1	Source / Host	Rabbit
Reactivity	Human	Clonality	Monoclonal
Applications	WB, IP	Conjugation	Unconjugated
Form / Buffer	Liquid in 50mM Tris-Glycine (pH 7.4), 0.15M NaCl, 50% Glycerol, 0.01% Sodium azide and 0.05% BSA.	Storage	at-20°C

**BACKGROUND**

Nucleic acid-binding protein which is essential for retrotransposition of LINE-1 elements in the genome. Functions as a nucleic acid chaperone binding its own transcript and therefore preferentially mobilizing the transcript from which they are encoded.

**APPLICATION**

To ensure optimal assay performance, AREX recommends conducting reagent titration tailored to each testing system for optimal detection results.

WB	1:500 - 1:1000
IP	1:10 - 1:50

\*Results are sample-specific. Please refer to your local assay conditions and test parameters for reference.

**PRODUCT OVERVIEW**

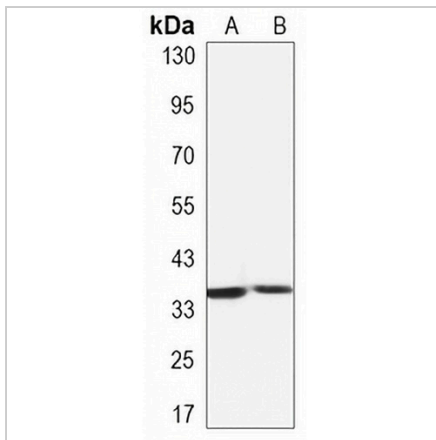
Description	Rabbit monoclonal antibody to L1RE1
Specificity	Recognizes endogenous levels of L1RE1 protein.
Antibody Type	Primary antibody
Immunogen	Recombinant protein of human LINE-1 ORF1p
Purification	The antibody was purified by immunogen affinity chromatography.
Molecular Weight	Predicted: 40 kD; Observed: 40 kD
Form/Buffer	Liquid in 50mM Tris-Glycine (pH 7.4), 0.15M NaCl, 50% Glycerol, 0.01% Sodium azide and 0.05% BSA.
Alternative Names	LRE1; LINE-1 retrotransposable element ORF1 protein; L1ORF1p; LINE retrotransposable element 1; LINE1 retrotransposable element 1
Gene Symbol	L1RE1
Entrez Gene	105370531(Human)
SwissProt	Q9UN81(Human)

\*AREX continuously optimizes our products. Webpage content may not reflect the latest updates. For inquiries, please contact [info@arexbio.com](mailto:info@arexbio.com) or your local distributor.

\*Clone Number, Reactivity, Source/Host and Clonality can be found in the product name and Key Features section above.

**DATASHEET****L1RE1 Rabbit Monoclonal Antibody(C3248)**

CAT. NO. AMA02860

**DATA**

Western blot analysis of L1RE1 expression in HeLa (A), A549 (B) whole cell lysates.  
(Predicted band size: 40 kD; Observed band size: 40 kD)

**STORAGE**

Store at 4°C short term. For long term storage, store at -20°C, avoiding freeze/thaw cycles.

**NOTE**

For Research Use Only. Not for diagnostic, therapeutics, prophylactic or in vivo use.