

DATASHEET

LC3-I/II Rabbit Monoclonal Antibody(C3249)

CAT. NO. AMA02861

KEY FEATURES

Target	LC3-I/II	Source / Host	Rabbit
Reactivity	Human, Mouse, Rat	Clonality	Monoclonal
Applications	WB, IP	Conjugation	Unconjugated
Form / Buffer	Liquid in 50mM Tris-Glycine (pH 7.4), 0.15M NaCl, 50% Glycerol, 0.01% Sodium azide and 0.05% BSA.	Storage	at-20°C

BACKGROUND

Ubiquitin-like modifier involved in formation of autophagosomal vacuoles (autophagosomes) . While LC3s are involved in elongation of the phagophore membrane, the GABARAP/GATE-16 subfamily is essential for a later stage in autophagosome maturation . Through its interaction with the reticulophagy receptor TEX264, participates in the remodeling of subdomains of the endoplasmic reticulum into autophagosomes upon nutrient stress, which then fuse with lysosomes for endoplasmic reticulum turnover .

APPLICATION

To ensure optimal assay performance, AREX recommends conducting reagent titration tailored to each testing system for optimal detection results.

WB	1:500 - 1:1000
IP	1:10 - 1:50

*Results are sample-specific. Please refer to your local assay conditions and test parameters for reference.

PRODUCT OVERVIEW

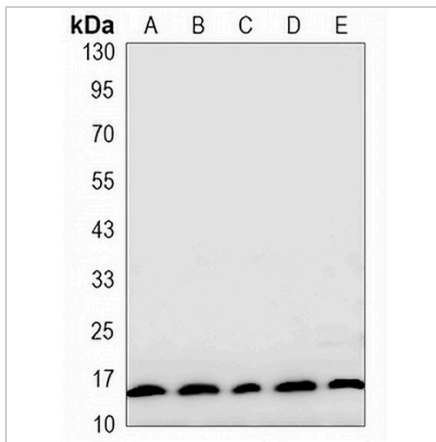
Description	Rabbit monoclonal antibody to LC3-I/II
Specificity	Recognizes endogenous levels of LC3-I/II protein.
Antibody Type	Primary antibody
Immunogen	A synthetic peptide of human MAP1LC3A
Purification	The antibody was purified by immunogen affinity chromatography.
Molecular Weight	Predicted: 14 kD; Observed: 14 kD
Form/Buffer	Liquid in 50mM Tris-Glycine (pH 7.4), 0.15M NaCl, 50% Glycerol, 0.01% Sodium azide and 0.05% BSA.
Alternative Names	Microtubule-associated proteins 1A/1B light chain 3A; Autophagy-related protein LC3 A; Autophagy-related ubiquitin-like modifier LC3 A; MAP1 light chain 3-like protein 1; MAP1A/MAP1B light chain 3 A; MAP1A/MAP1B LC3 A; Microtubule-associated protein 1 light chain 3 alpha
Gene Symbol	MAP1LC3A
Entrez Gene	84557(Human); 66734(Mouse); 362245(Rat)
SwissProt	Q9H492(Human); Q91VR7(Mouse); Q6XVN8(Rat)

*AREX continuously optimizes our products. Webpage content may not reflect the latest updates. For inquiries, please contact info@arexbio.com or your local distributor.

*Clone Number, Reactivity, Source/Host and Clonality can be found in the product name and Key Features section above.

DATASHEET**LC3-I/II Rabbit Monoclonal Antibody(C3249)**

CAT. NO. AMA02861

DATA

Western blot analysis of LC3-I/II expression in A549 (A), MCF7 (B), 293T (C), C2C12 (D), rat brain (E) whole cell lysates. (Predicted band size: 14 kD; Observed band size: 14 kD)

STORAGE

Store at 4°C short term. For long term storage, store at -20°C, avoiding freeze/thaw cycles.

NOTE

For Research Use Only. Not for diagnostic, therapeutics, prophylactic or in vivo use.