

DATASHEET

P2Y12 Rabbit Monoclonal Antibody(C3251)

CAT. NO. AMA02863

KEY FEATURES

Target	P2Y12	Source / Host	Rabbit
Reactivity	Human	Clonality	Monoclonal
Applications	WB, IP	Conjugation	Unconjugated
Form / Buffer	Liquid in 50mM Tris-Glycine (pH 7.4), 0.15M NaCl, 50% Glycerol, 0.01% Sodium azide and 0.05% BSA.	Storage	at-20°C

BACKGROUND

Receptor for ADP and ATP coupled to G-proteins that inhibit the adenylyl cyclase second messenger system. Not activated by UDP and UTP. Required for normal platelet aggregation and blood coagulation.

APPLICATION

To ensure optimal assay performance, AREX recommends conducting reagent titration tailored to each testing system for optimal detection results.

WB	1:500 - 1:1000
IP	1:10 - 1:50

*Results are sample-specific. Please refer to your local assay conditions and test parameters for reference.

PRODUCT OVERVIEW

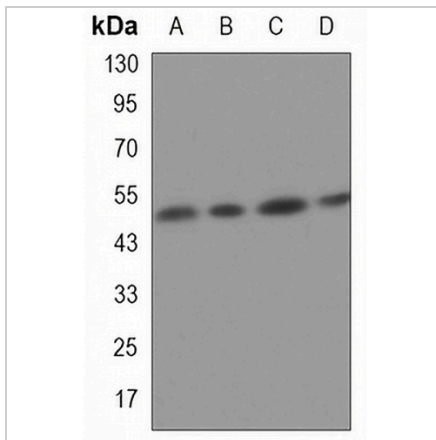
Description	Rabbit monoclonal antibody to P2Y12
Specificity	Recognizes endogenous levels of P2Y12 protein.
Antibody Type	Primary antibody
Immunogen	A synthetic peptide of human P2Y12
Purification	The antibody was purified by immunogen affinity chromatography.
Molecular Weight	Predicted: 39 kD; Observed: 52 kD
Form/Buffer	Liquid in 50mM Tris-Glycine (pH 7.4), 0.15M NaCl, 50% Glycerol, 0.01% Sodium azide and 0.05% BSA.
Alternative Names	HORK3; P2Y purinoceptor 12; P2Y12; ADP-glucose receptor; ADPG-R; P2T(AC); P2Y(AC); P2Y(cyc); P2Y12 platelet ADP receptor; P2Y(ADP); SP1999
Gene Symbol	P2RY12
Entrez Gene	64805(Human)
SwissProt	Q9H244(Human)

*AREX continuously optimizes our products. Webpage content may not reflect the latest updates. For inquiries, please contact info@arexbio.com or your local distributor.

*Clone Number, Reactivity, Source/Host and Clonality can be found in the product name and Key Features section above.

DATASHEET**P2Y12 Rabbit Monoclonal Antibody(C3251)**

CAT. NO. AMA02863

DATA

Western blot analysis of P2Y12 expression in A549 (A), HL60 (B), U251 (C), U87MG (D) whole cell lysates. (Predicted band size: 39 kD; Observed band size: 52 kD)

STORAGE

Store at 4°C short term. For long term storage, store at -20°C, avoiding freeze/thaw cycles.

NOTE

For Research Use Only. Not for diagnostic, therapeutics, prophylactic or in vivo use.