

**DATASHEET**

**Paxillin Rabbit Monoclonal Antibody(C3253)**

CAT. NO. AMA02865

**KEY FEATURES**

Target	Paxillin	Source / Host	Rabbit
Reactivity	Human, Rat, Hamster	Clonality	Monoclonal
Applications	WB, IHC, IP	Conjugation	Unconjugated
Form / Buffer	Liquid in 50mM Tris-Glycine (pH 7.4), 0.15M NaCl, 50% Glycerol, 0.01% Sodium azide and 0.05% BSA.	Storage	at-20°C

**BACKGROUND**

Cytoskeletal protein involved in actin-membrane attachment at sites of cell adhesion to the extracellular matrix (focal adhesion). Recruits other proteins such as TRIM15 to focal adhesion.

**APPLICATION**

To ensure optimal assay performance, AREX recommends conducting reagent titration tailored to each testing system for optimal detection results.

WB	1:500 - 1:1000
IHC	1:50 - 1:100
IP	1:10 - 1:50

\*Results are sample-specific. Please refer to your local assay conditions and test parameters for reference.

**PRODUCT OVERVIEW**

Description	Rabbit monoclonal antibody to Paxillin
Specificity	Recognizes endogenous levels of Paxillin protein.
Antibody Type	Primary antibody
Immunogen	A synthetic peptide of human Paxillin
Purification	The antibody was purified by immunogen affinity chromatography.
Molecular Weight	Predicted: 65 kD; Observed: 65 kD
Form/Buffer	Liquid in 50mM Tris-Glycine (pH 7.4), 0.15M NaCl, 50% Glycerol, 0.01% Sodium azide and 0.05% BSA.
Alternative Names	Paxillin
Gene Symbol	PXN
Entrez Gene	5829(Human); 360820(Rat)
SwissProt	P49023(Human); Q66H76(Rat)

\*AREX continuously optimizes our products. Webpage content may not reflect the latest updates. For inquiries, please contact [info@arexbio.com](mailto:info@arexbio.com) or your local distributor.

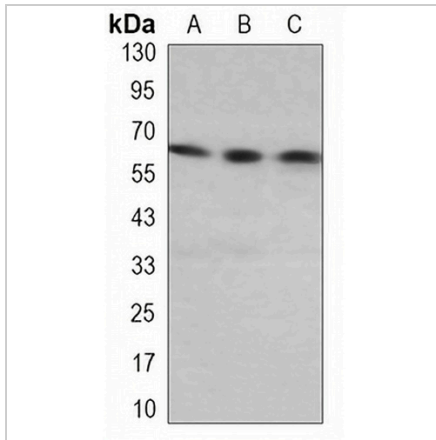
\*Clone Number, Reactivity, Source/Host and Clonality can be found in the product name and Key Features section above.

**DATASHEET**

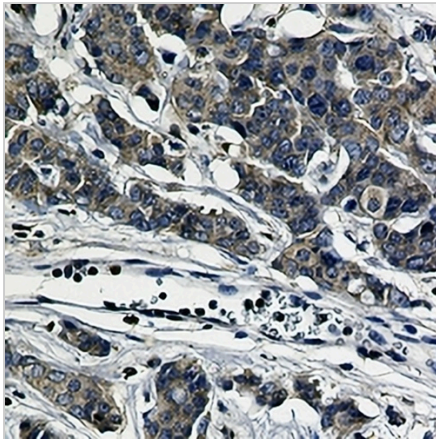
**Paxillin Rabbit Monoclonal Antibody(C3253)**

CAT. NO. AMA02865

**DATA**



Western blot analysis of Paxillin expression in HeLa (A), CHOK1 (B), C6 (C) whole cell lysates. (Predicted band size: 65 kD; Observed band size: 65 kD)



Immunohistochemical analysis of Paxillin staining in human breast carcinoma formalin fixed paraffin embedded tissue section. The section was pre-treated using heat mediated antigen retrieval with sodium citrate buffer (pH 6.0). The section was then incubated with the antibody at room temperature and detected using an HRP conjugated compact polymer system. DAB was used as the chromogen. The section was then counterstained with haematoxylin and mounted with DPX.

**STORAGE**

Store at 4°C short term. For long term storage, store at -20°C, avoiding freeze/thaw cycles.

**NOTE**

For Research Use Only. Not for diagnostic, therapeutics, prophylactic or in vivo use.