

**DATASHEET**

**RPS20 Rabbit Monoclonal Antibody(C3257)**

CAT. NO. AMA02869

**KEY FEATURES**

Target	RPS20	Source / Host	Rabbit
Reactivity	Human, Mouse, Rat, Hamster	Clonality	Monoclonal
Applications	WB, IHC	Conjugation	Unconjugated
Form / Buffer	Liquid in 50mM Tris-Glycine (pH 7.4), 0.15M NaCl, 50% Glycerol, 0.01% Sodium azide and 0.05% BSA.	Storage	at-20°C

**BACKGROUND**

Component of the small ribosomal subunit . The ribosome is a large ribonucleoprotein complex responsible for the synthesis of proteins in the cell .

**APPLICATION**

To ensure optimal assay performance, AREX recommends conducting reagent titration tailored to each testing system for optimal detection results.

WB	1:500 - 1:1000
IHC	1:50 - 1:100

\*Results are sample-specific. Please refer to your local assay conditions and test parameters for reference.

**PRODUCT OVERVIEW**

Description	Rabbit monoclonal antibody to RPS20
Specificity	Recognizes endogenous levels of RPS20 protein.
Antibody Type	Primary antibody
Immunogen	A synthetic peptide of human RPS20
Purification	The antibody was purified by immunogen affinity chromatography.
Molecular Weight	Predicted: 13 kD; Observed: 13 kD
Form/Buffer	Liquid in 50mM Tris-Glycine (pH 7.4), 0.15M NaCl, 50% Glycerol, 0.01% Sodium azide and 0.05% BSA.
Alternative Names	40S ribosomal protein S20
Gene Symbol	RPS20
Entrez Gene	6224(Human); 67427(Mouse); 100359951; 100362149; 100362684; 122772(Rat)
SwissProt	P60866(Human); P60867(Mouse); P60868(Rat)

\*AREX continuously optimizes our products. Webpage content may not reflect the latest updates. For inquiries, please contact [info@arexbio.com](mailto:info@arexbio.com) or your local distributor.

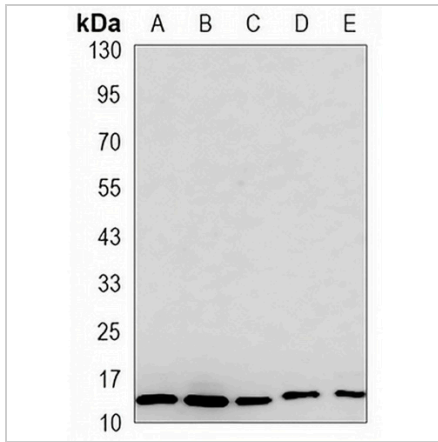
\*Clone Number, Reactivity, Source/Host and Clonality can be found in the product name and Key Features section above.

**DATASHEET**

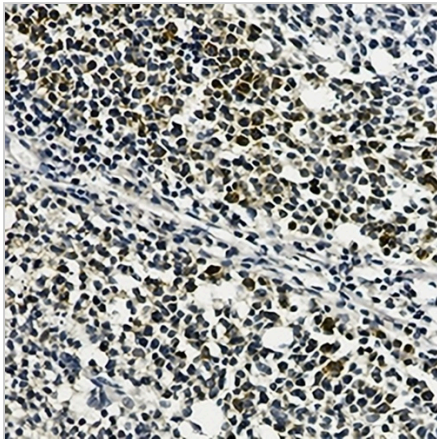
**RPS20 Rabbit Monoclonal Antibody(C3257)**

CAT. NO. AMA02869

**DATA**



Western blot analysis of RPS20 expression in NIH3T3 (A), Raw264.7 (B), PC12 (C), C6 (D), HeLa (E) whole cell lysates. (Predicted band size: 13 kD; Observed band size: 13 kD)



Immunohistochemical analysis of RPS20 staining in human tonsil formalin fixed paraffin embedded tissue section. The section was pre-treated using heat mediated antigen retrieval with sodium citrate buffer (pH 6.0). The section was then incubated with the antibody at room temperature and detected using an HRP conjugated compact polymer system. DAB was used as the chromogen. The section was then counterstained with haematoxylin and mounted with DPX.

**STORAGE**

Store at 4°C short term. For long term storage, store at -20°C, avoiding freeze/thaw cycles.

**NOTE**

For Research Use Only. Not for diagnostic, therapeutics, prophylactic or in vivo use.