

DATASHEET

SOD1 Rabbit Monoclonal Antibody(C3262)

CAT. NO. AMA02874

KEY FEATURES

Target	SOD1	Source / Host	Rabbit
Reactivity	Human, Rat	Clonality	Monoclonal
Applications	WB, IHC, IF/ICC	Conjugation	Unconjugated
Form / Buffer	Liquid in 50mM Tris-Glycine (pH 7.4), 0.15M NaCl, 50% Glycerol, 0.01% Sodium azide and 0.05% BSA.	Storage	at-20°C

BACKGROUND

Destroys radicals which are normally produced within the cells and which are toxic to biological systems . Catalyzes the oxidation of hydrogen sulfide (H₂S) to sulfate, playing an important role in detoxifying H₂S and limiting the accumulation of reactive sulfur species (RSS) such as persulfides and polysulfides .

APPLICATION

To ensure optimal assay performance, AREX recommends conducting reagent titration tailored to each testing system for optimal detection results.

WB	1:500 - 1:1000
IHC	1:50 - 1:100
IF/ICC	1:50 - 1:100

*Results are sample-specific. Please refer to your local assay conditions and test parameters for reference.

PRODUCT OVERVIEW

Description	Rabbit monoclonal antibody to SOD1
Specificity	Recognizes endogenous levels of SOD1 protein.
Antibody Type	Primary antibody
Immunogen	A synthetic peptide of human Superoxide Dismutase 1
Purification	The antibody was purified by immunogen affinity chromatography.
Molecular Weight	Predicted: 16 kD; Observed: 16 kD
Form/Buffer	Liquid in 50mM Tris-Glycine (pH 7.4), 0.15M NaCl, 50% Glycerol, 0.01% Sodium azide and 0.05% BSA.
Alternative Names	Superoxide dismutase [Cu-Zn]; Superoxide dismutase 1; hSod1
Gene Symbol	SOD1
Entrez Gene	6647(Human); 24786(Rat)
SwissProt	P00441(Human); P07632(Rat)

*AREX continuously optimizes our products. Webpage content may not reflect the latest updates. For inquiries, please contact info@arexbio.com or your local distributor.

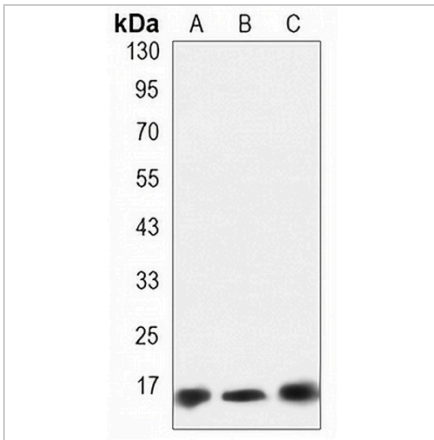
*Clone Number, Reactivity, Source/Host and Clonality can be found in the product name and Key Features section above.

DATASHEET

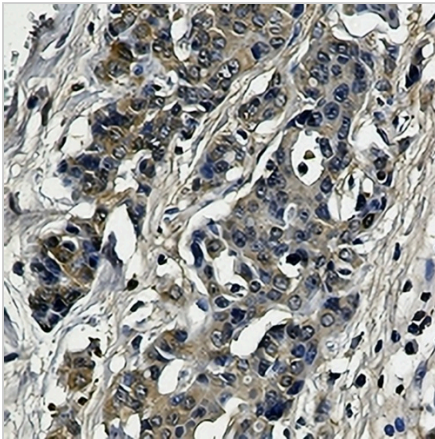
SOD1 Rabbit Monoclonal Antibody(C3262)

CAT. NO. AMA02874

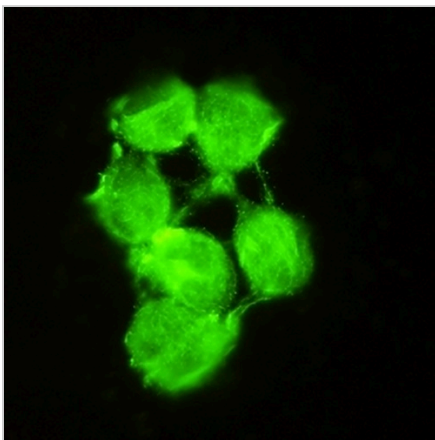
DATA



Western blot analysis of SOD1 expression in A549 (A), HL60 (B), C6 (C) whole cell lysates. (Predicted band size: 16 kD; Observed band size: 16 kD)



Immunohistochemical analysis of SOD1 staining in human breast carcinoma formalin fixed paraffin embedded tissue section. The section was pre-treated using heat mediated antigen retrieval with sodium citrate buffer (pH 6.0). The section was then incubated with the antibody at room temperature and detected using an HRP conjugated compact polymer system. DAB was used as the chromogen. The section was then counterstained with haematoxylin and mounted with DPX.



Immunofluorescent analysis of SOD1 staining in HCT116 cells. Formalin-fixed cells were permeabilized with 0.1% Triton X-100 in TBS for 5-10 minutes and blocked with 3% BSA-PBS for 30 minutes at room temperature. Cells were probed with the primary antibody in 3% BSA-PBS and incubated overnight at 4 °C in a humidified chamber. Cells were washed with PBST and incubated with a AREX® Fluor 488 -conjugated secondary antibody (green) in PBS at room temperature in the dark.

STORAGE

Store at 4°C short term. For long term storage, store at -20°C, avoiding freeze/thaw cycles.

NOTE

For Research Use Only. Not for diagnostic, therapeutics, prophylactic or in vivo use.