

DATASHEET
YTHDC2 Rabbit Monoclonal Antibody(C3268)
CAT. NO. AMA02880
KEY FEATURES

Target	YTHDC2	Source / Host	Rabbit
Reactivity	Human	Clonality	Monoclonal
Applications	WB, IP	Conjugation	Unconjugated
Form / Buffer	Liquid in 50mM Tris-Glycine (pH 7.4), 0.15M NaCl, 50% Glycerol, 0.01% Sodium azide and 0.05% BSA.	Storage	at-20°C

BACKGROUND

3'-5' RNA helicase that plays a key role in the male and female germline by promoting transition from mitotic to meiotic divisions in stem cells . Specifically recognizes and binds N6-methyladenosine (m6A)-containing RNAs, a modification present at internal sites of mRNAs and some non-coding RNAs that plays a role in the efficiency of RNA processing and stability . Essential for ensuring a successful progression of the meiotic program in the germline by regulating the level of m6A-containing RNAs . Acts by binding and promoting degradation of m6A-containing mRNAs: the 3'-5' RNA helicase activity is required for this process and RNA degradation may be mediated by XRN1 exoribonuclease . Required for both spermatogenesis and oogenesis .

APPLICATION

To ensure optimal assay performance, AREX recommends conducting reagent titration tailored to each testing system for optimal detection results.

WB	1:500 - 1:1000
IP	1:10 - 1:50

*Results are sample-specific. Please refer to your local assay conditions and test parameters for reference.

PRODUCT OVERVIEW

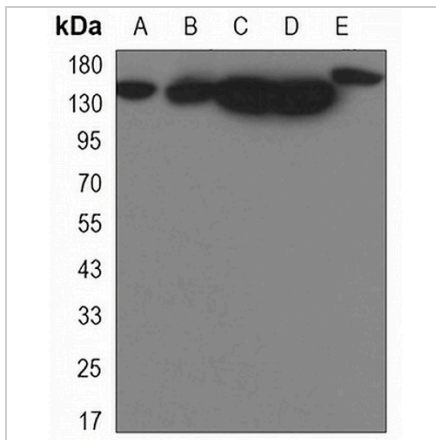
Description	Rabbit monoclonal antibody to YTHDC2
Specificity	Recognizes endogenous levels of YTHDC2 protein.
Antibody Type	Primary antibody
Immunogen	Recombinant protein of mouse YTHDC2
Purification	The antibody was purified by immunogen affinity chromatography.
Molecular Weight	Predicted: 161 kD; Observed: 161 kD
Form/Buffer	Liquid in 50mM Tris-Glycine (pH 7.4), 0.15M NaCl, 50% Glycerol, 0.01% Sodium azide and 0.05% BSA.
Alternative Names	Probable ATP-dependent RNA helicase YTHDC2
Gene Symbol	Ythdc2
Entrez Gene	240255(Human)
SwissProt	Q9H6S0(Human)

*AREX continuously optimizes our products. Webpage content may not reflect the latest updates. For inquiries, please contact info@arexbio.com or your local distributor.

*Clone Number, Reactivity, Source/Host and Clonality can be found in the product name and Key Features section above.

DATASHEET**YTHDC2 Rabbit Monoclonal Antibody(C3268)**

CAT. NO. AMA02880

DATA

Western blot analysis of YTHDC2 expression in HeLa (A), A549 (B), HL60 (C), U251 (D), U87MG (E) whole cell lysates. (Predicted band size: 161 kD; Observed band size: 161 kD)

STORAGE

Store at 4°C short term. For long term storage, store at -20°C, avoiding freeze/thaw cycles.

NOTE

For Research Use Only. Not for diagnostic, therapeutics, prophylactic or in vivo use.