

DATASHEET

YTHDF1 Rabbit Monoclonal Antibody(C3269)

CAT. NO. AMA02881

KEY FEATURES

Target	YTHDF1	Source / Host	Rabbit
Reactivity	Human, Hamster	Clonality	Monoclonal
Applications	WB, IP	Conjugation	Unconjugated
Form / Buffer	Liquid in 50mM Tris-Glycine (pH 7.4), 0.15M NaCl, 50% Glycerol, 0.01% Sodium azide and 0.05% BSA.	Storage	at-20°C

BACKGROUND

Specifically recognizes and binds N6-methyladenosine (m6A)-containing mRNAs, and regulates their stability -containing mRNAs, and regulates their stability . M6A is a modification present at internal sites of mRNAs and some non-coding RNAs and plays a role in mRNA stability and processing . Acts as a regulator of mRNA stability by promoting degradation of m6A-containing mRNAs via interaction with the CCR4-NOT complex . The YTHDF paralogs (YTHDF1, YTHDF2 and YTHDF3) shares m6A-containing mRNAs targets and act redundantly to mediate mRNA degradation and cellular differentiation . Required to facilitate learning and memory formation in the hippocampus by binding to m6A-containing neuronal mRNAs . Acts as a regulator of axon guidance by binding to m6A-containing ROBO3 transcripts .

APPLICATION

To ensure optimal assay performance, AREX recommends conducting reagent titration tailored to each testing system for optimal detection results.

WB	1:500 - 1:1000
IP	1:10 - 1:50

*Results are sample-specific. Please refer to your local assay conditions and test parameters for reference.

PRODUCT OVERVIEW

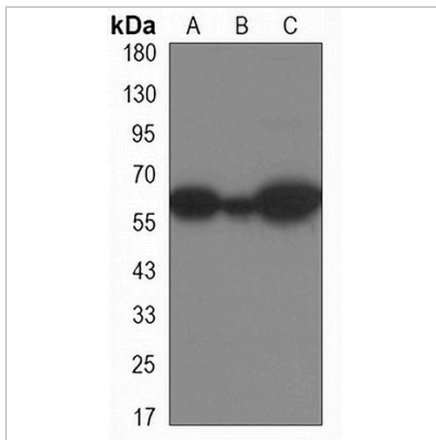
Description	Rabbit monoclonal antibody to YTHDF1
Specificity	Recognizes endogenous levels of YTHDF1 protein.
Antibody Type	Primary antibody
Immunogen	Recombinant protein of mouse YTHDF1
Purification	The antibody was purified by immunogen affinity chromatography.
Molecular Weight	Predicted: 61 kD; Observed: 61 kD
Form/Buffer	Liquid in 50mM Tris-Glycine (pH 7.4), 0.15M NaCl, 50% Glycerol, 0.01% Sodium azide and 0.05% BSA.
Alternative Names	C20orf21; YTH domain-containing family protein 1; Dermatomyositis associated with cancer putative autoantigen 1; DACA-1
Gene Symbol	Ythdf1
Entrez Gene	228994(Human)
SwissProt	Q9BYJ9(Human)

*AREX continuously optimizes our products. Webpage content may not reflect the latest updates. For inquiries, please contact info@arexbio.com or your local distributor.

*Clone Number, Reactivity, Source/Host and Clonality can be found in the product name and Key Features section above.

DATASHEET**YTHDF1 Rabbit Monoclonal Antibody(C3269)**

CAT. NO. AMA02881

DATA

Western blot analysis of YTHDF1 expression in HeLa (A), CHOK1 (B), Ramos (C) whole cell lysates. (Predicted band size: 61 kD; Observed band size: 61 kD)

STORAGE

Store at 4°C short term. For long term storage, store at -20°C, avoiding freeze/thaw cycles.

NOTE

For Research Use Only. Not for diagnostic, therapeutics, prophylactic or in vivo use.