

**DATASHEET**

**PP2C-alpha Mouse Monoclonal Antibody(C3271)**

CAT. NO. AMA02883

**KEY FEATURES**

Target	PP2C-alpha	Source / Host	Mouse
Reactivity	Human, Monkey	Clonality	Monoclonal
Applications	WB, FC	Conjugation	Unconjugated
Form / Buffer	Liquid in 0.42% Potassium phosphate, 0.87% Sodium chloride, pH 7.3, 30% glycerol, and 0.01% sodium azide.		Storage at-20°C

**BACKGROUND**

Enzyme with a broad specificity. Negatively regulates TGF-beta signaling through dephosphorylating SMAD2 and SMAD3, resulting in their dissociation from SMAD4, nuclear export of the SMADs and termination of the TGF-beta-mediated signaling. Dephosphorylates PRKAA1 and PRKAA2. Plays an important role in the termination of TNF-mediated NF-kappa-B activation through dephosphorylating and inactivating IKKKB/IKKB.

**APPLICATION**

To ensure optimal assay performance, AREX recommends conducting reagent titration tailored to each testing system for optimal detection results.

WB	1:500 - 1:1000
FC	1:100 - 1:200

\*Results are sample-specific. Please refer to your local assay conditions and test parameters for reference.

**PRODUCT OVERVIEW**

Description	Mouse monoclonal antibody to PP2C-alpha
Specificity	Recognizes endogenous levels of PP2C-alpha protein.
Antibody Type	Primary antibody
Immunogen	Recombinant fragment of human PP2C-alpha expressed in E. Coli
Purification	The antibody was purified by protein G.
Molecular Weight	Predicted: 42 kD; Observed: 42 kD
Form/Buffer	Liquid in 0.42% Potassium phosphate, 0.87% Sodium chloride, pH 7.3, 30% glycerol, and 0.01% sodium azide.
Alternative Names	PPPM1A; Protein phosphatase 1A; Protein phosphatase 2C isoform alpha; PP2C-alpha; Protein phosphatase IA
Gene Symbol	PPM1A
Entrez Gene	5494(Human)
SwissProt	P35813(Human)

\*AREX continuously optimizes our products. Webpage content may not reflect the latest updates. For inquiries, please contact [info@arexbio.com](mailto:info@arexbio.com) or your local distributor.

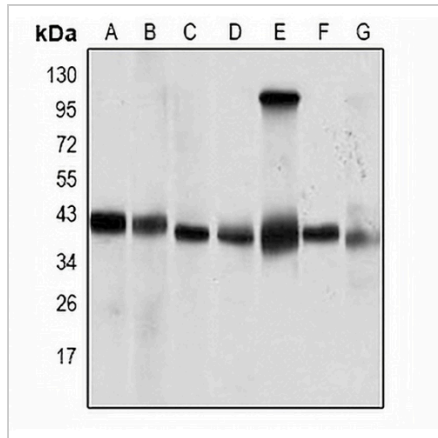
\*Clone Number, Reactivity, Source/Host and Clonality can be found in the product name and Key Features section above.

**DATASHEET**

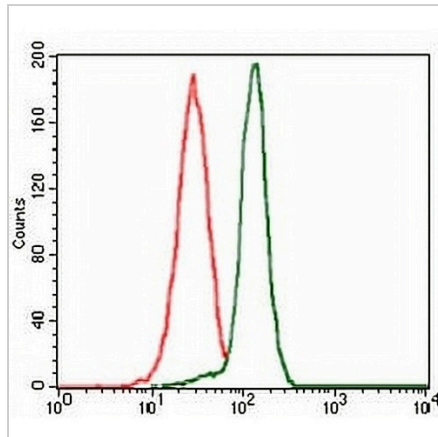
**PP2C-alpha Mouse Monoclonal Antibody(C3271)**

CAT. NO. AMA02883

**DATA**



Western blot analysis of PP2C-alpha expression in COS7 (A), Jurkat (B), A431 (C), HeLa (D), HEK293 (E), Raji (F), MCF7 (G) whole cell lysates. (Predicted band size: 42 kD; Observed band size: 42 kD)



Flow cytometric analysis of HeLa cells using Anti-PP2C-alpha Antibody (green) and negative control (red).

**STORAGE**

Store at 4°C short term. For long term storage, store at -20°C, avoiding freeze/thaw cycles.

**NOTE**

For Research Use Only. Not for diagnostic, therapeutics, prophylactic or in vivo use.