

DATASHEET

KDM4A Rabbit Monoclonal Antibody(C3272)

CAT. NO. AMA02884

KEY FEATURES

| | | | |
|---------------|---|---------------|--------------|
| Target | KDM4A | Source / Host | Rabbit |
| Reactivity | Human | Clonality | Monoclonal |
| Applications | WB, IP | Conjugation | Unconjugated |
| Form / Buffer | Liquid in 50mM Tris-Glycine (pH 7.4), 0.15M NaCl, 50% Glycerol, 0.01% Sodium azide and 0.05% BSA. | Storage | at-20°C |

BACKGROUND

Histone demethylase that specifically demethylates 'Lys-9' and 'Lys-36' residues of histone H3, thereby playing a central role in histone code . Does not demethylate histone H3 'Lys-4', H3 'Lys-27' nor H4 'Lys-20' . Demethylates trimethylated H3 'Lys-9' and H3 'Lys-36' residue, while it has no activity on mono- and dimethylated residues . Demethylation of Lys residue generates formaldehyde and succinate . Also able to demethylate histone H1-4 methylated at 'Lys-26' (H1.4K26me1, H1.4K26me2 and H1.4K26me3) . Participates in transcriptional repression of ASCL2 and E2F-responsive promoters via the recruitment of histone deacetylases and NCOR1, respectively .

APPLICATION

To ensure optimal assay performance, AREX recommends conducting reagent titration tailored to each testing system for optimal detection results.

| | |
|----|----------------|
| WB | 1:500 - 1:1000 |
| IP | 1:10 - 1:50 |

*Results are sample-specific. Please refer to your local assay conditions and test parameters for reference.

PRODUCT OVERVIEW

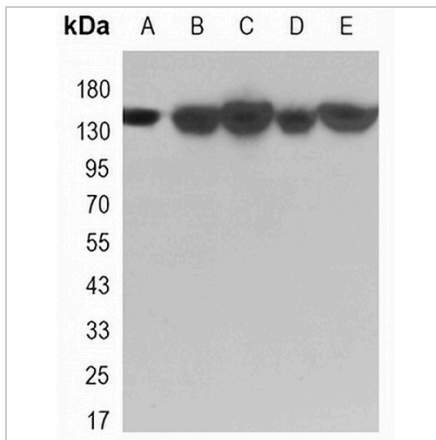
| | |
|-------------------|--|
| Description | Rabbit monoclonal antibody to KDM4A |
| Specificity | Recognizes endogenous levels of KDM4A protein. |
| Antibody Type | Primary antibody |
| Immunogen | A synthesized peptide derived from human KDM4A / JHDM3A / JMJD2A |
| Purification | The antibody was purified by immunogen affinity chromatography. |
| Molecular Weight | Predicted: 121 kD; Observed: 150 kD |
| Form/Buffer | Liquid in 50mM Tris-Glycine (pH 7.4), 0.15M NaCl, 50% Glycerol, 0.01% Sodium azide and 0.05% BSA. |
| Alternative Names | JHDM3A; JMJD2; JMJD2A; KIAA0677; Lysine-specific demethylase 4A; JmjC domain-containing histone demethylation protein 3A; Jumonji domain-containing protein 2A |
| Gene Symbol | KDM4A |
| Entrez Gene | 9682(Human) |
| SwissProt | O75164(Human) |

*AREX continuously optimizes our products. Webpage content may not reflect the latest updates. For inquiries, please contact info@arexbio.com or your local distributor.

*Clone Number, Reactivity, Source/Host and Clonality can be found in the product name and Key Features section above.

DATASHEET**KDM4A Rabbit Monoclonal Antibody(C3272)**

CAT. NO. AMA02884

DATA

Western blot analysis of KDM4A expression in HeLa (A), A549 (B), HL60 (C), U2OS (D), U87MG (E) whole cell lysates. (Predicted band size: 121 kD; Observed band size: 150 kD)

STORAGE

Store at 4°C short term. For long term storage, store at -20°C, avoiding freeze/thaw cycles.

NOTE

For Research Use Only. Not for diagnostic, therapeutics, prophylactic or in vivo use.