

DATASHEET

PDHA1 Mouse Monoclonal Antibody(C3293)

CAT. NO. AMA02905

KEY FEATURES

| | | | |
|---------------|---|---------------|--------------|
| Target | PDHA1 | Source / Host | Mouse |
| Reactivity | Human, Mouse | Clonality | Monoclonal |
| Applications | WB, IF/ICC | Conjugation | Unconjugated |
| Form / Buffer | Liquid in PBS containing 50% glycerol, 0.5% BSA and 0.02% sodium azide, pH 7.3. | Storage | at-20°C |

BACKGROUND

Together with PDHB forms the heterotetrameric E1 subunit of the pyruvate dehydrogenase (PDH) complex . The PDH complex catalyzes the overall conversion of pyruvate to acetyl-CoA and CO(2), and thereby links cytoplasmic glycolysis and the mitochondrial tricarboxylic acid (TCA) cycle . It contains multiple copies of three enzymatic components: pyruvate dehydrogenase (E1), dihydrolipoamide acetyltransferase (E2) and dihydrolipoamide dehydrogenase (E3) (Probable). The E1 subunit catalyzes both the thiamine pyrophosphate (TPP)-dependent decarboxylation of pyruvate and the reductive acetylation of a lipoyl group covalently linked to the lipoyl-bearing domains of E2 .

APPLICATION

To ensure optimal assay performance, AREX recommends conducting reagent titration tailored to each testing system for optimal detection results.

| | |
|--------|----------------|
| WB | 1:500 - 1:1000 |
| IF/ICC | 1:50 - 1:100 |

*Results are sample-specific. Please refer to your local assay conditions and test parameters for reference.

PRODUCT OVERVIEW

| | |
|-------------------|---|
| Description | Mouse monoclonal antibody to PDHA1 |
| Specificity | Recognizes endogenous levels of PDHA1 protein. |
| Antibody Type | Primary antibody |
| Immunogen | Purified recombinant human Pyruvate Dehydrogenase protein fragments expressed in E.coli. |
| Purification | The antibody was purified by immunogen affinity chromatography. |
| Molecular Weight | Predicted: 43 kD; Observed: 43 kD |
| Form/Buffer | Liquid in PBS containing 50% glycerol, 0.5% BSA and 0.02% sodium azide, pH 7.3. |
| Alternative Names | PHE1A; Pyruvate dehydrogenase E1 component subunit alpha somatic form mitochondrial; PDHE1-A type I |
| Gene Symbol | PDHA1 |
| Entrez Gene | 5160(Human); 18597(Mouse) |
| SwissProt | P08559(Human); P35486(Mouse) |

*AREX continuously optimizes our products. Webpage content may not reflect the latest updates. For inquiries, please contact info@arexbio.com or your local distributor.

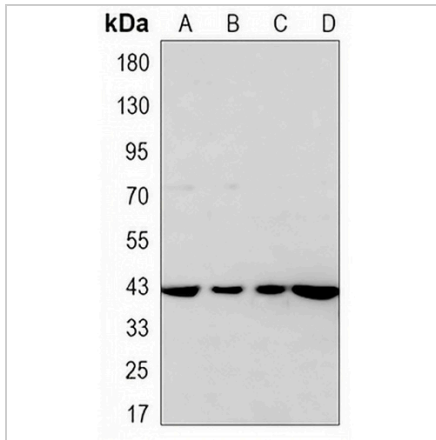
*Clone Number, Reactivity, Source/Host and Clonality can be found in the product name and Key Features section above.

DATASHEET

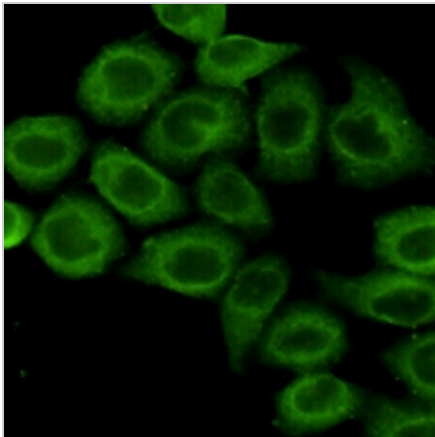
PDHA1 Mouse Monoclonal Antibody(C3293)

CAT. NO. AMA02905

DATA



Western blot analysis of PDHA1 expression in 293T (A), H1299 (B), mEsc (C), Tc1 (D) whole cell lysates. (Predicted band size: 43 kD; Observed band size: 43 kD)



Immunofluorescent analysis of PDHA1 staining in HeLa cells. Formalin-fixed cells were permeabilized with 0.1% Triton X-100 in TBS for 5-10 minutes and blocked with 3% BSA-PBS for 30 minutes at room temperature. Cells were probed with the primary antibody in 3% BSA-PBS and incubated overnight at 4 °C in a humidified chamber. Cells were washed with PBST and incubated with a AREX® Fluor 488 -conjugated secondary antibody (green) in PBS at room temperature in the dark.

STORAGE

Store at 4°C short term. For long term storage, store at -20°C, avoiding freeze/thaw cycles.

NOTE

For Research Use Only. Not for diagnostic, therapeutics, prophylactic or in vivo use.