

DATASHEET

TIF1 beta Mouse Monoclonal Antibody(C3294)

CAT. NO. AMA02906

KEY FEATURES

| | | | |
|---------------|---|---------------|--------------|
| Target | TIF1 beta | Source / Host | Mouse |
| Reactivity | Human | Clonality | Monoclonal |
| Applications | WB, IHC, IF/ICC, IP | Conjugation | Unconjugated |
| Form / Buffer | Liquid in PBS containing 50% glycerol, 0.5% BSA and 0.02% sodium azide, pH 7.3. | Storage | at-20°C |

BACKGROUND

Nuclear corepressor for KRAB domain-containing zinc finger proteins (KRAB-ZFPs). Mediates gene silencing by recruiting CHD3, a subunit of the nucleosome remodeling and deacetylation (NuRD) complex, and SETDB1 (which specifically methylates histone H3 at 'Lys-9' (H3K9me)) to the promoter regions of KRAB target genes. Enhances transcriptional repression by coordinating the increase in H3K9me, the decrease in histone H3 'Lys-9 and 'Lys-14' acetylation (H3K9ac and H3K14ac, respectively) and the disposition of HP1 proteins to silence gene expression. Recruitment of SETDB1 induces heterochromatinization. May play a role as a coactivator for CEBPB and NR3C1 in the transcriptional activation of ORM1. Also a corepressor for ERBB4.

APPLICATION

To ensure optimal assay performance, AREX recommends conducting reagent titration tailored to each testing system for optimal detection results.

| | |
|--------|----------------|
| WB | 1:500 - 1:1000 |
| IHC | 1:50 - 1:100 |
| IF/ICC | 1:50 - 1:100 |
| IP | 1:10 - 1:50 |

*Results are sample-specific. Please refer to your local assay conditions and test parameters for reference.

PRODUCT OVERVIEW

| | |
|-------------------|---|
| Description | Mouse monoclonal antibody to TIF1 beta |
| Specificity | Recognizes endogenous levels of TIF1 beta protein. |
| Antibody Type | Primary antibody |
| Immunogen | Purified recombinant human KAP1 / TIF1 beta protein fragments expressed in E.coli. |
| Purification | The antibody was purified by immunogen affinity chromatography. |
| Molecular Weight | Predicted: 89 kD; Observed: 110 kD |
| Form/Buffer | Liquid in PBS containing 50% glycerol, 0.5% BSA and 0.02% sodium azide, pH 7.3. |
| Alternative Names | KAP1; RNF96; TIF1B; Transcription intermediary factor 1-beta; TIF1-beta; E3 SUMO-protein ligase TRIM28; KRAB-associated protein 1; KAP-1; KRAB-interacting protein 1; KRIP-1; Nuclear corepressor KAP-1; RING finger protein 96; Tripartite motif-containing protein 28 |
| Gene Symbol | TRIM28 |
| Entrez Gene | 10155(Human) |
| SwissProt | Q13263(Human) |

*AREX continuously optimizes our products. Webpage content may not reflect the latest updates. For inquiries, please contact info@arexbio.com or your local distributor.

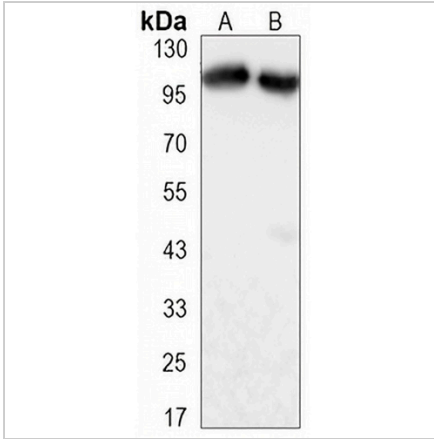
*Clone Number, Reactivity, Source/Host and Clonality can be found in the product name and Key Features section above.

DATASHEET

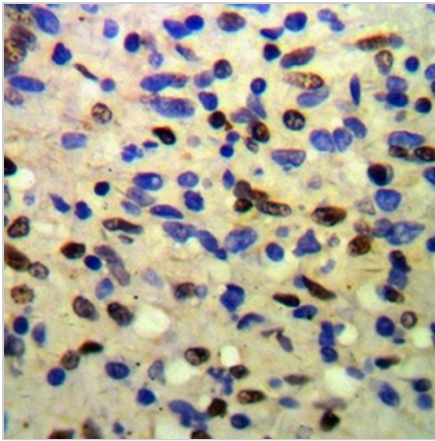
TIF1 beta Mouse Monoclonal Antibody(C3294)

CAT. NO. AMA02906

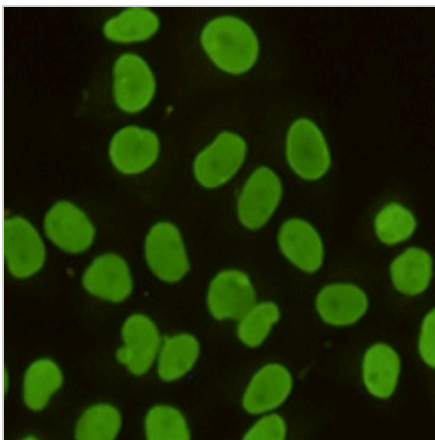
DATA



Western blot analysis of TIF1 beta expression in 293T (A), HepG2 (B) whole cell lysates. (Predicted band size: 89 kD; Observed band size: 110 kD)



Immunohistochemical analysis of TIF1 beta staining in human spleen formalin fixed paraffin embedded tissue section. The section was pre-treated using heat mediated antigen retrieval with sodium citrate buffer (pH 6.0). The section was then incubated with the antibody at room temperature and detected using an HRP conjugated compact polymer system. DAB was used as the chromogen. The section was then counterstained with haematoxylin and mounted with DPX.



Immunofluorescent analysis of TIF1 beta staining in HeLa cells. Formalin-fixed cells were permeabilized with 0.1% Triton X-100 in TBS for 5-10 minutes and blocked with 3% BSA-PBS for 30 minutes at room temperature. Cells were probed with the primary antibody in 3% BSA-PBS and incubated overnight at 4 °C in a humidified chamber. Cells were washed with PBST and incubated with a AREX® Fluor 488 -conjugated secondary antibody (green) in PBS at room temperature in the dark.

STORAGE

Store at 4°C short term. For long term storage, store at -20°C, avoiding freeze/thaw cycles.

NOTE

For Research Use Only. Not for diagnostic, therapeutics, prophylactic or in vivo use.