

DATASHEET

ACLY Mouse Monoclonal Antibody(C3304)

CAT. NO. AMA02916

KEY FEATURES

Target	ACLY	Source / Host	Mouse
Reactivity	Human, Mouse, Monkey	Clonality	Monoclonal
Applications	WB, IF/ICC, FC	Conjugation	Unconjugated
Form / Buffer	Liquid in PBS containing 50% glycerol, 0.5% BSA and 0.02% sodium azide, pH 7.3.	Storage	at-20°C

BACKGROUND

Catalyzes the cleavage of citrate into oxaloacetate and acetyl-CoA, the latter serving as common substrate in multiple biochemical reactions in protein, carbohydrate and lipid metabolism.

APPLICATION

To ensure optimal assay performance, AREX recommends conducting reagent titration tailored to each testing system for optimal detection results.

WB	1:500 - 1:1000
IF/ICC	1:50 - 1:100
FC	1:50 - 1:100

*Results are sample-specific. Please refer to your local assay conditions and test parameters for reference.

PRODUCT OVERVIEW

Description	Mouse monoclonal antibody to ACLY
Specificity	Recognizes endogenous levels of ACLY protein.
Antibody Type	Primary antibody
Immunogen	Purified recombinant human ATP-Citrate Lyase protein fragments expressed in E.coli.
Purification	The antibody was purified by immunogen affinity chromatography.
Molecular Weight	Predicted: 121 kD; Observed: 121 kD
Form/Buffer	Liquid in PBS containing 50% glycerol, 0.5% BSA and 0.02% sodium azide, pH 7.3.
Alternative Names	ATP-citrate synthase; ATP-citrate (pro-S-)-lyase; ACL; Citrate cleavage enzyme
Gene Symbol	ACLY
Entrez Gene	47(Human); 104112(Mouse)
SwissProt	P53396(Human); Q91V92(Mouse)

*AREX continuously optimizes our products. Webpage content may not reflect the latest updates. For inquiries, please contact info@arexbio.com or your local distributor.

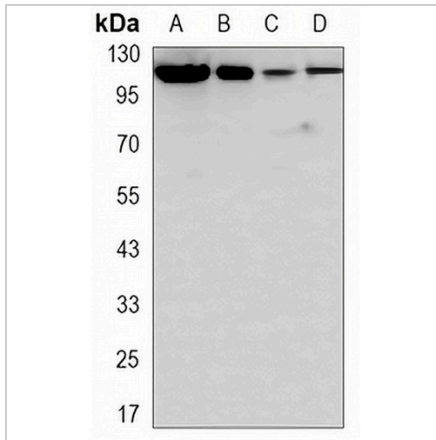
*Clone Number, Reactivity, Source/Host and Clonality can be found in the product name and Key Features section above.

DATASHEET

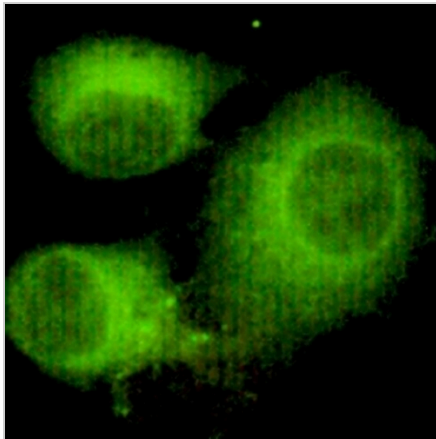
ACLY Mouse Monoclonal Antibody(C3304)

CAT. NO. AMA02916

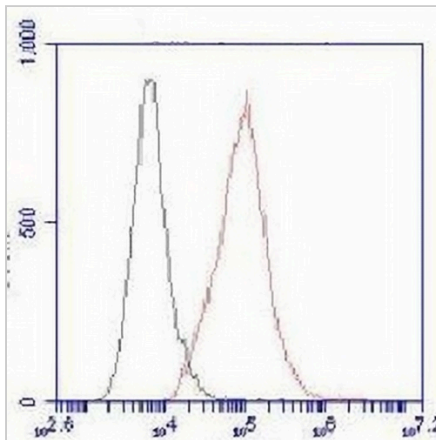
DATA



Western blot analysis of ACLY expression in NIH3T3 (A), K562 (B), COS7 (C), HeLa (D) whole cell lysates. (Predicted band size: 121 kD; Observed band size: 121 kD)



Immunofluorescent analysis of ACLY staining in HeLa cells. Formalin-fixed cells were permeabilized with 0.1% Triton X-100 in TBS for 5-10 minutes and blocked with 3% BSA-PBS for 30 minutes at room temperature. Cells were probed with the primary antibody in 3% BSA-PBS and incubated overnight at 4 °C in a humidified chamber. Cells were washed with PBST and incubated with a AREX® Fluor 488 -conjugated secondary antibody (green) in PBS at room temperature in the dark.



Flow cytometric analysis of ACLY in HeLa cells (red). Blue line histogram represents the isotype control.

STORAGE

Store at 4°C short term. For long term storage, store at -20°C, avoiding freeze/thaw cycles.

NOTE

For Research Use Only. Not for diagnostic, therapeutics, prophylactic or in vivo use.