

DATASHEET

GTF2H1 Mouse Monoclonal Antibody(C3305)

CAT. NO. AMA02917

KEY FEATURES

| | | | |
|---------------|---|---------------|--------------|
| Target | GTF2H1 | Source / Host | Mouse |
| Reactivity | Human | Clonality | Monoclonal |
| Applications | WB, IF/ICC, IP | Conjugation | Unconjugated |
| Form / Buffer | Liquid in PBS containing 50% glycerol, 0.5% BSA and 0.02% sodium azide, pH 7.3. | Storage | at-20°C |

BACKGROUND

Component of the general transcription and DNA repair factor IIH (TFIIH) core complex, which is involved in general and transcription-coupled nucleotide excision repair (NER) of damaged DNA and, when complexed to CAK, in RNA transcription by RNA polymerase II. In NER, TFIIH acts by opening DNA around the lesion to allow the excision of the damaged oligonucleotide and its replacement by a new DNA fragment. In transcription, TFIIH has an essential role in transcription initiation. When the pre-initiation complex (PIC) has been established, TFIIH is required for promoter opening and promoter escape. Phosphorylation of the C-terminal tail (CTD) of the largest subunit of RNA polymerase II by the kinase module CAK controls the initiation of transcription.

APPLICATION

To ensure optimal assay performance, AREX recommends conducting reagent titration tailored to each testing system for optimal detection results.

| | |
|--------|----------------|
| WB | 1:500 - 1:1000 |
| IF/ICC | 1:50 - 1:100 |
| IP | 1:10 - 1:50 |

*Results are sample-specific. Please refer to your local assay conditions and test parameters for reference.

PRODUCT OVERVIEW

| | |
|-------------------|---|
| Description | Mouse monoclonal antibody to GTF2H1 |
| Specificity | Recognizes endogenous levels of GTF2H1 protein. |
| Antibody Type | Primary antibody |
| Immunogen | Purified recombinant human GTF2H1 protein fragments expressed in E.coli. |
| Purification | The antibody was purified by immunogen affinity chromatography. |
| Molecular Weight | Predicted: 62 kD; Observed: 62 kD |
| Form/Buffer | Liquid in PBS containing 50% glycerol, 0.5% BSA and 0.02% sodium azide, pH 7.3. |
| Alternative Names | BTF2; General transcription factor IIH subunit 1; Basic transcription factor 2 62 kDa subunit; BTF2 p62; General transcription factor IIH polypeptide 1; TFIIH basal transcription factor complex p62 subunit |
| Gene Symbol | GTF2H1 |
| Entrez Gene | 2965(Human) |
| SwissProt | P32780(Human) |

*AREX continuously optimizes our products. Webpage content may not reflect the latest updates. For inquiries, please contact info@arexbio.com or your local distributor.

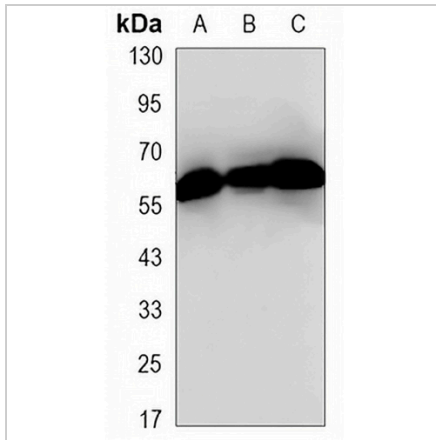
*Clone Number, Reactivity, Source/Host and Clonality can be found in the product name and Key Features section above.

DATASHEET

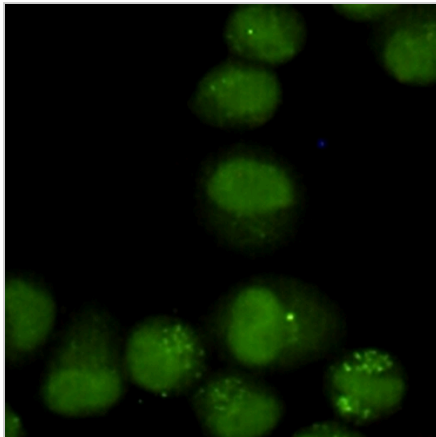
GTF2H1 Mouse Monoclonal Antibody(C3305)

CAT. NO. AMA02917

DATA



Western blot analysis of GTF2H1 expression in HeLa (A), HeLa (B), Jurkat (C) whole cell lysates. (Predicted band size: 62 kD; Observed band size: 62 kD)



Immunofluorescent analysis of GTF2H1 staining in HeLa cells. Formalin-fixed cells were permeabilized with 0.1% Triton X-100 in TBS for 5-10 minutes and blocked with 3% BSA-PBS for 30 minutes at room temperature. Cells were probed with the primary antibody in 3% BSA-PBS and incubated overnight at 4 °C in a humidified chamber. Cells were washed with PBST and incubated with a AREX® Fluor 488 -conjugated secondary antibody (green) in PBS at room temperature in the dark.

STORAGE

Store at 4°C short term. For long term storage, store at -20°C, avoiding freeze/thaw cycles.

NOTE

For Research Use Only. Not for diagnostic, therapeutics, prophylactic or in vivo use.